

## Excellent Integrated System Limited

Stocking Distributor

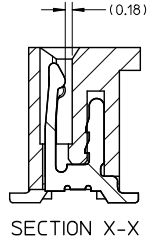
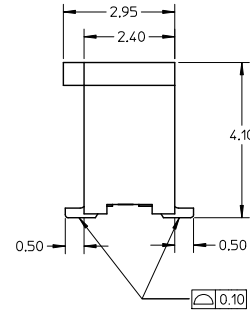
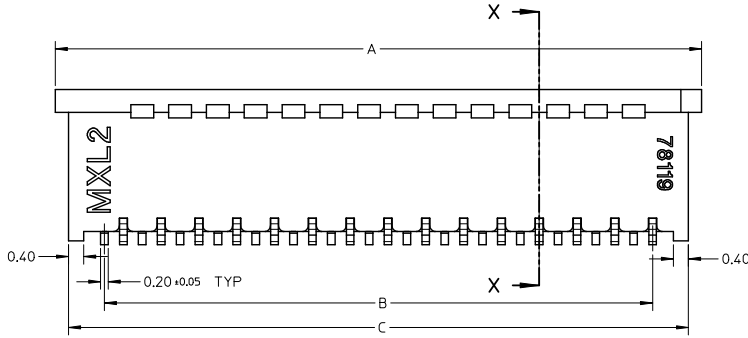
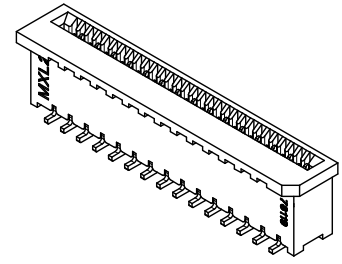
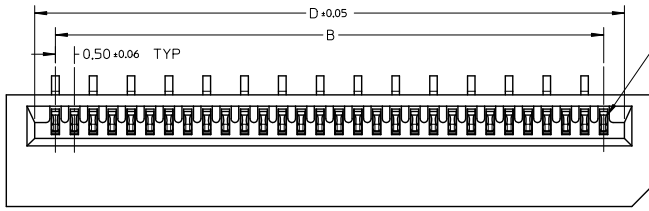
Click to view price, real time Inventory, Delivery & Lifecycle Information:

[Molex Connector Corporation](#)

[0781191259](#)

For any questions, you can email us directly:

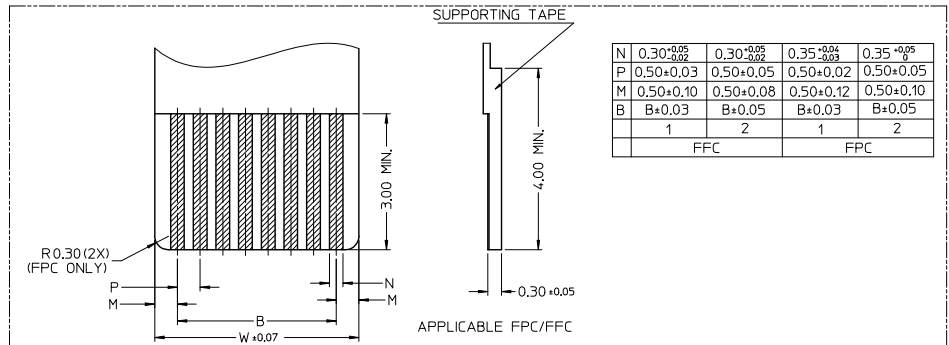
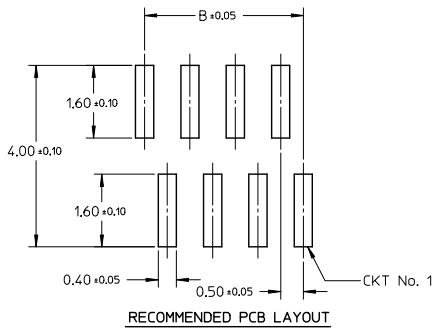
[sales@integrated-circuit.com](mailto:sales@integrated-circuit.com)



NOTE:

- MATERIAL:  
HOUSING: PA46 GLASS FILLED, UL94V-0, COLOR: NATURAL  
TERMINAL: PHOSPHOR BRONZE
- PLATING: 1) PARTIAL GOLD PLATING OVER NICKEL PLATING OVERALL  
CONTACT POINT: 0.10µm MINIMUM GOLD PLATING  
TAIL POINT :GOLD PLATING  
2) 1-3 µm TIN-BISMUTH OVER NICKEL PLATING OVERALL
- PRODUCT SPECIFICATION: PS-78119-001
- PRODUCT ARE PACKED IN TAPE & REEL.

|  |                 |  |   |                           |   |                        |
|--|-----------------|--|---|---------------------------|---|------------------------|
| <b>REVISED</b><br>EC. NO.: I2013-1512<br>DRAWN BY: DRWNAKOSHI101<br>CHKD BY: CHKOKTAKAHASHI<br>APPR: YNUGAWA<br>2013/06/12<br>2013/06/12<br>2013/06/12 | QUALITY SYMBOLS | GENERAL TOLERANCES (UNLESS SPECIFIED)                | DIMENSION STYLE   | SCALE                     | DESIGN UNITS                                | THIRD ANGLE PROJECTION |
|  | ▽=0             | 4 PLACES ± --- ± ---                                 | MM ONLY   | NTS                       | METRIC                                      |                        |
|  | ▽=0             | 3 PLACES ± --- ± ---                                 | DRAWN BY: YLQ1A0  | DATE: 2006/04/11          | TITLE: 0.50MM PITCH, FPC CONN. NON-ZIF, SMT |                        |
|  | ▽=0             | 2 PLACES ± 0.15 ± ---                                | CHECKED BY: BOKOK   | DATE: 2006/04/18          |   |                        |
|  |                 | 1 PLACE ± --- ± ---                                  | APPROVED BY: PTLIM  | DATE: 2006/04/18          |   |                        |
|  |                 | 0 PLACE ± --- ± ---                                  | MATERIAL NO. SEE TABLE  | DOCUMENT NO. SD-78119-001 |   | SHEET NO. 1 OF 7       |
|  |                 | ANGULAR ± 3 °  | THIS DRAWING CONTAINS INFORMATION THAT IS PROPRIETARY TO MOLEX INCORPORATED AND SHOULD NOT BE USED WITHOUT WRITTEN PERMISSION |                           |   |                        |
|  |                 | DRAFT WHERE APPLICABLE MUST REMAIN WITHIN DIMENSIONS |   |                           |   |                        |



|   |  |   |  |  |   |  |
|---|--|---|--|--|---|--|
| <b>REVISED</b><br>EC NO.: J2013-1512<br>DRAWN: YOSHII 01 2013/06/12<br>CHECKER: TAKAHASHI 2013/06/12<br>APPR: INOUE 2013/06/12<br>REV: A4 | QUALITY SYMBOLS<br>∇=0<br>∇=0<br>∇=0                                 | GENERAL TOLERANCES (UNLESS SPECIFIED)<br>mm INCH<br>4 PLACES ± --- ± ---<br>3 PLACES ± --- ± ---<br>2 PLACES ± 0.15 ± ---<br>1 PLACE ± --- ± ---<br>0 PLACE ± ± | DIMENSION STYLE<br>MM ONLY<br>DRAWN BY: YLQ1A0 DATE: 2006/04/11<br>CHECKED BY: BOKOK DATE: 2006/04/18<br>APPROVED BY: PTLIM DATE: 2006/04/18 | SCALE: NTS<br>DESIGN UNITS: METRIC<br>THIRD ANGLE PROJECTION | TITLE: 0.50MM PITCH, FPC CONN. NON-ZIF, SMT<br><b>molex</b> | MATERIAL NO.: SEE TABLE<br>DOCUMENT NO.: SD-78119-001<br>SHEET NO.: 2 OF 7 |
|   | ANGULAR ± 3°<br>DRAFT WHERE APPLICABLE MUST REMAIN WITHIN DIMENSIONS |   | THIS DRAWING CONTAINS INFORMATION THAT IS PROPRIETARY TO MOLEX INCORPORATED AND SHOULD NOT BE USED WITHOUT WRITTEN PERMISSION                |  |   |  |
|   |  |   |  |  |   |  |
|   |  |   |  |  |   |  |

PARTIAL GOLD PLATING TERMINAL ASSEMBLY PART NUMBERS

| ASSY P/N<br>W/O PACKAGING | CKT | DIM A | DIM B | DIM C | DIM D | PLATING<br>TYPE |
|---------------------------|-----|-------|-------|-------|-------|-----------------|
| 78119-0108                | 10  | 7.10  | 4.50  | 6.40  | 5.60  | 1               |
| 78119-0118                | 11  | 7.60  | 5.00  | 6.90  | 6.10  |                 |
| 78119-0128                | 12  | 8.10  | 5.50  | 7.40  | 6.60  |                 |
| 78119-0138                | 13  | 8.60  | 6.00  | 7.90  | 7.10  |                 |
| 78119-0148                | 14  | 9.10  | 6.50  | 8.40  | 7.60  |                 |
| 78119-0158                | 15  | 9.60  | 7.00  | 8.90  | 8.10  |                 |
| 78119-0168                | 16  | 10.10 | 7.50  | 9.40  | 8.60  |                 |
| 78119-0178                | 17  | 10.60 | 8.00  | 9.90  | 9.10  |                 |
| 78119-0188                | 18  | 11.10 | 8.50  | 10.40 | 9.60  |                 |
| 78119-0198                | 19  | 11.60 | 9.00  | 10.90 | 10.10 |                 |
| 78119-0208                | 20  | 12.10 | 9.50  | 11.40 | 10.60 |                 |
| 78119-0218                | 21  | 12.60 | 10.00 | 11.90 | 11.10 |                 |
| 78119-0228                | 22  | 13.10 | 10.50 | 12.40 | 11.60 |                 |
| 78119-0238                | 23  | 13.60 | 11.00 | 12.90 | 12.10 |                 |
| 78119-0248                | 24  | 14.10 | 11.50 | 13.40 | 12.60 |                 |
| 78119-0258                | 25  | 14.60 | 12.00 | 13.90 | 13.10 |                 |
| 78119-0268                | 26  | 15.10 | 12.50 | 14.40 | 13.60 |                 |
| 78119-0278                | 27  | 15.60 | 13.00 | 14.90 | 14.10 |                 |
| 78119-0288                | 28  | 16.10 | 13.50 | 15.40 | 14.60 |                 |
| 78119-0298                | 29  | 16.60 | 14.00 | 15.90 | 15.10 |                 |
| 78119-0308                | 30  | 17.10 | 14.50 | 16.40 | 15.60 |                 |

| ASSY P/N<br>W/O PACKAGING | CKT | DIM A | DIM B | DIM C | DIM D | PLATING<br>TYPE |
|---------------------------|-----|-------|-------|-------|-------|-----------------|
| 78119-0318                | 31  | 17.60 | 15.00 | 16.90 | 16.10 | 1               |
| 78119-0328                | 32  | 18.10 | 15.50 | 17.40 | 16.60 |                 |
| 78119-0338                | 33  | 18.60 | 16.00 | 17.90 | 17.10 |                 |
| 78119-0348                | 34  | 19.10 | 16.50 | 18.40 | 17.60 |                 |
| 78119-0358                | 35  | 19.60 | 17.00 | 18.90 | 18.10 |                 |
| 78119-0368                | 36  | 20.10 | 17.50 | 19.40 | 18.60 |                 |
| 78119-0378                | 37  | 20.60 | 18.00 | 19.90 | 19.10 |                 |
| 78119-0388                | 38  | 21.10 | 18.50 | 20.40 | 19.60 |                 |
| 78119-0398                | 39  | 21.60 | 19.00 | 20.90 | 20.10 |                 |
| 78119-0408                | 40  | 22.10 | 19.50 | 21.40 | 20.60 |                 |

|         |                   |  |
|---------|-------------------|--|
| REVISED | EC NO. J2013-1512 | 2013/06/12                             |
|         | DRW: YOSHIOI      | 2013/06/12                             |
|         | CHK: KATAHASHI    | 2013/06/12                             |
|         | APP: TADGAMA      | 2013/06/23                             |
| REV     | DESCRIPTION       | QUALITY SYMBOLS                        |
| A4      |                   | $\nabla=0$<br>$\nabla=0$<br>$\nabla=0$ |

| GENERAL TOLERANCES<br>(UNLESS SPECIFIED)                   |              |
|--|--------------|
|  | mm INCH      |
| 4 PLACES   | ±0.15 ±0.006 |
| 3 PLACES   | ±0.20 ±0.008 |
| 2 PLACES   | ±0.30 ±0.012 |
| 1 PLACE  | ±0.50 ±0.020 |
| 0 PLACE  | ±0.75 ±0.030 |
| ANGULAR ± 3°   |              |
| DRAFT WHERE APPLICABLE<br>MUST REMAIN<br>WITHIN DIMENSIONS |              |

| DIMENSION STYLE<br>MM ONLY |            |
|----------------------------|------------|
| DRAWN BY                   | DATE       |
| YLOIAO                     | 2006/04/11 |
| CHECKED BY                 | DATE       |
| BOKOK                      | 2006/04/18 |
| APPROVED BY                | DATE       |
| PTL IM                     | 2006/04/18 |
| MATERIAL NO.               | SEE TABLE  |

|   |              |                        |
|---|--------------|------------------------|
| SCALE                                   | DESIGN UNITS | THIRD ANGLE PROJECTION |
| NTS                                     | METRIC       |                        |
| TITLE                                   |              |                        |
| 0.50MM PITCH, FPC CONN.<br>NON-ZIF, SMT |              |                        |
| DOCUMENT NO.                            |              | SHEET NO.              |
| SD-78119-001                            |              | 3 OF 7                 |



10 9 8 7 6 5 4 3 2 1

ELV & RoHS COMPLIANT

TIN-BISMUTH PLATING TERMINAL ASSEMBLY PART NUMBERS

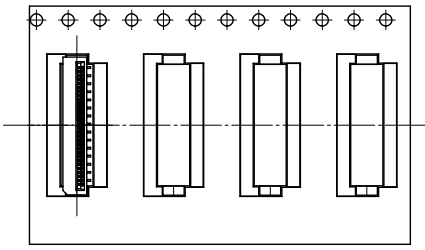
| ASSY P/N W/O PACKAGING | CKT | DIM A | DIM B | DIM C | DIM D | PLATING TYPE |
|------------------------|-----|-------|-------|-------|-------|--------------|
| 78119-0109             | 10  | 7.10  | 4.50  | 6.40  | 5.60  | 2            |
| 78119-0119             | 11  | 7.60  | 5.00  | 6.90  | 6.10  |              |
| 78119-0129             | 12  | 8.10  | 5.50  | 7.40  | 6.60  |              |
| 78119-0139             | 13  | 8.60  | 6.00  | 7.90  | 7.10  |              |
| 78119-0149             | 14  | 9.10  | 6.50  | 8.40  | 7.60  |              |
| 78119-0159             | 15  | 9.60  | 7.00  | 8.90  | 8.10  |              |
| 78119-0169             | 16  | 10.10 | 7.50  | 9.40  | 8.60  |              |
| 78119-0179             | 17  | 10.60 | 8.00  | 9.90  | 9.10  |              |
| 78119-0189             | 18  | 11.10 | 8.50  | 10.40 | 9.60  |              |
| 78119-0199             | 19  | 11.60 | 9.00  | 10.90 | 10.10 |              |
| 78119-0209             | 20  | 12.10 | 9.50  | 11.40 | 10.60 |              |
| 78119-0219             | 21  | 12.60 | 10.00 | 11.90 | 11.10 |              |
| 78119-0229             | 22  | 13.10 | 10.50 | 12.40 | 11.60 |              |
| 78119-0239             | 23  | 13.60 | 11.00 | 12.90 | 12.10 |              |
| 78119-0249             | 24  | 14.10 | 11.50 | 13.40 | 12.60 |              |
| 78119-0259             | 25  | 14.60 | 12.00 | 13.90 | 13.10 |              |
| 78119-0269             | 26  | 15.10 | 12.50 | 14.40 | 13.60 |              |
| 78119-0279             | 27  | 15.60 | 13.00 | 14.90 | 14.10 |              |
| 78119-0289             | 28  | 16.10 | 13.50 | 15.40 | 14.60 |              |
| 78119-0299             | 29  | 16.60 | 14.00 | 15.90 | 15.10 |              |
| 78119-0309             | 30  | 17.10 | 14.50 | 16.40 | 15.60 |              |

| ASSY P/N W/O PACKAGING | CKT | DIM A | DIM B | DIM C | DIM D | PLATING TYPE |
|------------------------|-----|-------|-------|-------|-------|--------------|
| 78119-0319             | 31  | 17.60 | 15.00 | 16.90 | 16.10 | 2            |
| 78119-0329             | 32  | 18.10 | 15.50 | 17.40 | 16.60 |              |
| 78119-0339             | 33  | 18.60 | 16.00 | 17.90 | 17.10 |              |
| 78119-0349             | 34  | 19.10 | 16.50 | 18.40 | 17.60 |              |
| 78119-0359             | 35  | 19.60 | 17.00 | 18.90 | 18.10 |              |
| 78119-0369             | 36  | 20.10 | 17.50 | 19.40 | 18.60 |              |
| 78119-0379             | 37  | 20.60 | 18.00 | 19.90 | 19.10 |              |
| 78119-0389             | 38  | 21.10 | 18.50 | 20.40 | 19.60 |              |
| 78119-0399             | 39  | 21.60 | 19.00 | 20.90 | 20.10 |              |
| 78119-0409             | 40  | 22.10 | 19.50 | 21.40 | 20.60 |              |

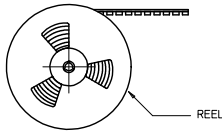
|  |   |   |                       |                                   |  |                     |                        |                           |
|--|---|---|-----------------------|-----------------------------------|--|---------------------|------------------------|---------------------------|
| <b>REVISED</b><br>EC NO. J2013-1512<br>DRW: YOSHII 2013/06/12<br>CHK: KIKUKAWASHI 2013/06/12<br>APPR: INOUE 2013/06/25 | <b>DESCRIPTION</b><br>QUALITY SYMBOLS<br>$\nabla=0$<br>$\nabla=0$<br>$\nabla=0$ | <b>GENERAL TOLERANCES (UNLESS SPECIFIED)</b><br>mm INCH   |                       | <b>DIMENSION STYLE</b><br>MM ONLY |  | SCALE<br>NTS        | DESIGN UNITS<br>METRIC | THIRD ANGLE<br>PROJECTION |
|  |   | 4 PLACES ± --- ± ---<br>3 PLACES ± --- ± ---<br>2 PLACES ± 0.15 ± ---<br>1 PLACE ± --- ± ---<br>0 PLACE ± ± | DRAWN BY<br>YLQIAO    | DATE<br>2006/04/11                | TITLE<br>0.50MM PITCH, FPC CONN.<br>NON-ZIF, SMT |                     |                        |                           |
|  |   | ANGULAR ± 3°<br>DRAFT WHERE APPLICABLE<br>MUST REMAIN<br>WITHIN DIMENSIONS                                  | CHECKED BY<br>BOKOK   | DATE<br>2006/04/18                | <b>molex</b>                                     |                     |                        |                           |
|  |   | MATERIAL NO.<br>SEE TABLE   | APPROVED BY<br>PTL IM | DATE<br>2006/04/18                | DOCUMENT NO.<br>SD-78119-001                     | SHEET NO.<br>4 OF 7 |                        |                           |

9 8 7 6 5 4 3 2 1

EMBOSSED TYPE A

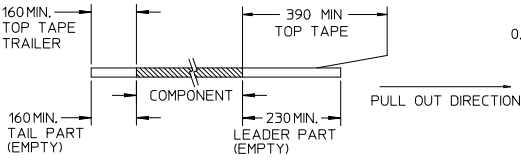


CUSTOMER  
PULL OUT DIRECTION

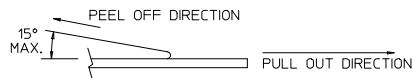


NOTES:

1. LEADER AND TRAILER TAPE

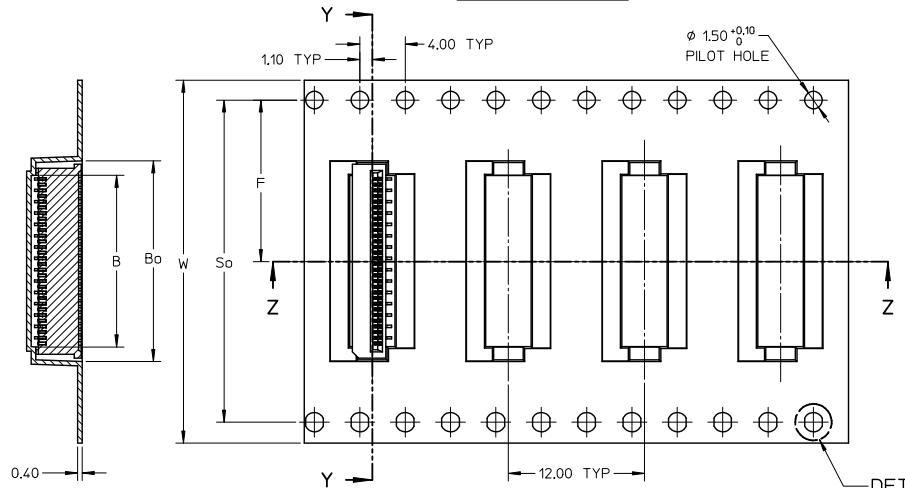


2. PEELING OFF FORCE OF THE TOP TAPE: 20-80gf.  
(PEELING DIRECTION AS SHOWN IN FOLLOWING FIGURE)

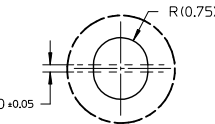


3. PACKAGING STANDARD IS AS PER EIA-481.  
4. TAPE & REEL QUANTITY = 1000 PCS/REEL

EMBOSSED TYPE B

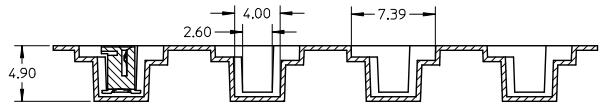


SECTION Y-Y



DETAIL 1

SECTION Z-Z



|  |                                      |  |      |                 |            |   |              |  |       |
|--|--------------------------------------|--|------|-----------------|------------|---|--------------|--|-------|
| REVISED<br>EC NO. 12013-1512<br>DRAWN BY CHIKKOTAKASHI 2013/06/12<br>APPR. YUDAWA 2013/06/25<br>A4 | QUALITY SYMBOLS<br>∇=0<br>∇=0<br>∇=0 | GENERAL TOLERANCES (UNLESS SPECIFIED)                |      | DIMENSION STYLE |            | SCALE   | DESIGN UNITS | THIRD ANGLE PROJECTION<br>0.50MM PITCH, FPC CONN.<br>NON-ZIF, SMT<br><b>molex</b><br>DOCUMENT NO. SD-78119-001<br>SHEET NO. 5 OF 7 |       |
|  |                                      |  |      | MM ONLY         |            | NTS   | METRIC       |  |       |
|  |                                      |  |      | mm              | INCH       | DRAWN BY  | DATE         |  | TITLE |
|  |                                      |  |      | 4 PLACES ±---   | ±---       | YLO1A0  | 2006/04/11   |  |       |
|  |                                      | 3 PLACES ±---  | ±--- | CHECKED BY      | DATE       |   |              |  |       |
|  |                                      | 2 PLACES ±0.15                                       | ±--- | BOKOK           | 2006/04/18 |   |              |  |       |
|  |                                      | 1 PLACE ±---   | ±--- | APPROVED BY     | DATE       |   |              |  |       |
|  |                                      | 0 PLACE ±  | ±    | PTLIM           | 2006/04/18 |   |              |  |       |
|  |                                      | ANGULAR ± 3°   |      | MATERIAL NO.    |            |   |              |  |       |
|  |                                      | DRAFT WHERE APPLICABLE MUST REMAIN WITHIN DIMENSIONS |      | SEE TABLE       |            |   |              |  |       |
|  |                                      |  |      | SIZE A3         |            | THIS DRAWING CONTAINS INFORMATION THAT IS PROPRIETARY TO MOLEX INCORPORATED AND SHOULD NOT BE USED WITHOUT WRITTEN PERMISSION |              |  |       |

10 9 8 7 6 5 4 3 2 1

ELV & RoHS COMPLIANT

PARTIAL GOLD PLATING TERMINAL ASSEMBLY PART NUMBERS

| ASSY P/N<br>PACKED IN T&R | ASSY P/N<br>W/O PACKAGING | CKT | W     | So    | F     | Bo    | B     | EMBOSSED<br>TYPE |
|---------------------------|---------------------------|-----|-------|-------|-------|-------|-------|------------------|
| 78119-1108                | 78119-0108                | 10  | 24.00 | -     | 11.50 | 7.40  | 5.10  | A                |
| 78119-1118                | 78119-0118                | 11  | 24.00 | -     | 11.50 | 7.90  | 5.60  |                  |
| 78119-1128                | 78119-0128                | 12  | 24.00 | -     | 11.50 | 8.40  | 6.10  |                  |
| 78119-1138                | 78119-0138                | 13  | 24.00 | -     | 11.50 | 8.90  | 6.60  |                  |
| 78119-1148                | 78119-0148                | 14  | 24.00 | -     | 11.50 | 9.40  | 7.10  |                  |
| 78119-1158                | 78119-0158                | 15  | 24.00 | -     | 11.50 | 9.90  | 7.60  |                  |
| 78119-1168                | 78119-0168                | 16  | 24.00 | -     | 11.50 | 10.40 | 8.10  |                  |
| 78119-1178                | 78119-0178                | 17  | 24.00 | -     | 11.50 | 10.90 | 8.60  |                  |
| 78119-1188                | 78119-0188                | 18  | 24.00 | -     | 11.50 | 11.40 | 9.10  |                  |
| 78119-1198                | 78119-0198                | 19  | 24.00 | -     | 11.50 | 11.90 | 9.60  |                  |
| 78119-1208                | 78119-0208                | 20  | 24.00 | -     | 11.50 | 12.40 | 10.10 |                  |
| 78119-1218                | 78119-0218                | 21  | 32.00 | 28.40 | 14.20 | 12.90 | 10.60 | B                |
| 78119-1228                | 78119-0228                | 22  | 32.00 | 28.40 | 14.20 | 13.40 | 11.10 |                  |
| 78119-1238                | 78119-0238                | 23  | 32.00 | 28.40 | 14.20 | 13.90 | 11.60 |                  |
| 78119-1248                | 78119-0248                | 24  | 32.00 | 28.40 | 14.20 | 14.40 | 12.10 |                  |
| 78119-1258                | 78119-0258                | 25  | 32.00 | 28.40 | 14.20 | 14.90 | 12.60 |                  |
| 78119-1268                | 78119-0268                | 26  | 32.00 | 28.40 | 14.20 | 15.40 | 13.10 |                  |
| 78119-1278                | 78119-0278                | 27  | 32.00 | 28.40 | 14.20 | 15.90 | 13.60 |                  |
| 78119-1288                | 78119-0288                | 28  | 32.00 | 28.40 | 14.20 | 16.40 | 14.10 |                  |
| 78119-1298                | 78119-0298                | 29  | 32.00 | 28.40 | 14.20 | 16.90 | 14.60 |                  |
| 78119-1308                | 78119-0308                | 30  | 32.00 | 28.40 | 14.20 | 17.40 | 15.10 |                  |

| ASSY P/N<br>PACKED IN T&R | ASSY P/N<br>W/O PACKAGING | CKT | W     | So    | F     | Bo    | B     | EMBOSSED<br>TYPE |
|---------------------------|---------------------------|-----|-------|-------|-------|-------|-------|------------------|
| 78119-1318                | 78119-0318                | 31  | 32.00 | 28.40 | 14.20 | 17.90 | 15.60 | B                |
| 78119-1328                | 78119-0328                | 32  | 32.00 | 28.40 | 14.20 | 18.40 | 16.10 |                  |
| 78119-1338                | 78119-0338                | 33  | 32.00 | 28.40 | 14.20 | 18.90 | 16.60 |                  |
| 78119-1348                | 78119-0348                | 34  | 32.00 | 28.40 | 14.20 | 19.40 | 17.10 |                  |
| 78119-1358                | 78119-0358                | 35  | 32.00 | 28.40 | 14.20 | 19.90 | 17.60 |                  |
| 78119-1368                | 78119-0368                | 36  | 32.00 | 28.40 | 14.20 | 20.40 | 18.10 |                  |
| 78119-1378                | 78119-0378                | 37  | 32.00 | 28.40 | 14.20 | 20.90 | 18.60 |                  |
| 78119-1388                | 78119-0388                | 38  | 32.00 | 28.40 | 14.20 | 21.40 | 19.10 |                  |
| 78119-1398                | 78119-0398                | 39  | 44.00 | 40.40 | 20.20 | 21.90 | 19.60 |                  |
| 78119-1408                | 78119-0408                | 40  | 44.00 | 40.40 | 20.20 | 22.40 | 20.10 |                  |

|  |                          |  |   |  |   |   |                     |                               |                                     |
|--|--------------------------|--|---|--|---|---|---------------------|-------------------------------|-------------------------------------|
| <b>REVISED</b><br>EC NO: J2013-1512<br>DRAWN BY: DR. N. YOSHII<br>CHECKED BY: TAKAHASHI<br>APPR: INOUE<br>DATE: 2013/06/12<br>DATE: 2013/06/12<br>DATE: 2013/06/12 | <b>DESCRIPTION</b><br>A4 | <b>QUALITY SYMBOLS</b><br>$\nabla=0$<br>$\nabla=0$<br>$\nabla=0$ | <b>GENERAL TOLERANCES (UNLESS SPECIFIED)</b>  |  | <b>DIMENSION STYLE</b><br>MM ONLY       |   | <b>SCALE</b><br>NTS | <b>DESIGN UNITS</b><br>METRIC | <b>THIRD ANGLE PROJECTION</b>       |
|  |                          |  | mm    INCH  |  | DRAWN BY: YLQ1A0<br>DATE: 2006/04/11    | <b>TITLE</b><br>0.50MM PITCH, FPC CONN.<br>NON-ZIF, SMT |                     |                               |                                     |
|  |                          |  | 4 PLACES ± --- ± ---<br>3 PLACES ± --- ± ---<br>2 PLACES ± 0.15 ± ---<br>1 PLACE ± --- ± ---<br>0 PLACE ±     ± |  | CHECKED BY: BOKOK<br>DATE: 2006/04/18   |   |                     |                               |                                     |
|  |                          |  | ANGULAR ± 3°<br>DRAFT WHERE APPLICABLE<br>MUST REMAIN<br>WITHIN DIMENSIONS                                      |  | APPROVED BY: PTL IM<br>DATE: 2006/04/18 |   |                     |                               | <b>DOCUMENT NO.</b><br>SD-78119-001 |

9 8 7 6 5 4 3 2 1

10 9 8 7 6 5 4 3 2 1

ELV & RoHS COMPLIANT

TIN-BISMUTH PLATING TERMINAL ASSEMBLY PART NUMBERS

| ASSY P/N<br>PACKED IN T&R | ASSY P/N<br>W/O PACKAGING | CKT | W     | So    | F     | Bo    | B     | EMBOSSED<br>TYPE |
|---------------------------|---------------------------|-----|-------|-------|-------|-------|-------|------------------|
| 78119-1109                | 78119-0109                | 10  | 24.00 | -     | 11.50 | 7.40  | 5.10  | A                |
| 78119-1119                | 78119-0119                | 11  | 24.00 | -     | 11.50 | 7.90  | 5.60  |                  |
| 78119-1129                | 78119-0129                | 12  | 24.00 | -     | 11.50 | 8.40  | 6.10  |                  |
| 78119-1139                | 78119-0139                | 13  | 24.00 | -     | 11.50 | 8.90  | 6.60  |                  |
| 78119-1149                | 78119-0149                | 14  | 24.00 | -     | 11.50 | 9.40  | 7.10  |                  |
| 78119-1159                | 78119-0159                | 15  | 24.00 | -     | 11.50 | 9.90  | 7.60  |                  |
| 78119-1169                | 78119-0169                | 16  | 24.00 | -     | 11.50 | 10.40 | 8.10  |                  |
| 78119-1179                | 78119-0179                | 17  | 24.00 | -     | 11.50 | 10.90 | 8.60  |                  |
| 78119-1189                | 78119-0189                | 18  | 24.00 | -     | 11.50 | 11.40 | 9.10  |                  |
| 78119-1199                | 78119-0199                | 19  | 24.00 | -     | 11.50 | 11.90 | 9.60  |                  |
| 78119-1209                | 78119-0209                | 20  | 24.00 | -     | 11.50 | 12.40 | 10.10 |                  |
| 78119-1219                | 78119-0219                | 21  | 32.00 | 28.40 | 14.20 | 12.90 | 10.60 | B                |
| 78119-1229                | 78119-0229                | 22  | 32.00 | 28.40 | 14.20 | 13.40 | 11.10 |                  |
| 78119-1239                | 78119-0239                | 23  | 32.00 | 28.40 | 14.20 | 13.90 | 11.60 |                  |
| 78119-1249                | 78119-0249                | 24  | 32.00 | 28.40 | 14.20 | 14.40 | 12.10 |                  |
| 78119-1259                | 78119-0259                | 25  | 32.00 | 28.40 | 14.20 | 14.90 | 12.60 |                  |
| 78119-1269                | 78119-0269                | 26  | 32.00 | 28.40 | 14.20 | 15.40 | 13.10 |                  |
| 78119-1279                | 78119-0279                | 27  | 32.00 | 28.40 | 14.20 | 15.90 | 13.60 |                  |
| 78119-1289                | 78119-0289                | 28  | 32.00 | 28.40 | 14.20 | 16.40 | 14.10 |                  |
| 78119-1299                | 78119-0299                | 29  | 32.00 | 28.40 | 14.20 | 16.90 | 14.60 |                  |
| 78119-1309                | 78119-0309                | 30  | 32.00 | 28.40 | 14.20 | 17.40 | 15.10 |                  |

| ASSY P/N<br>PACKED IN T&R | ASSY P/N<br>W/O PACKAGING | CKT | W     | So    | F     | Bo    | B     | EMBOSSED<br>TYPE |
|---------------------------|---------------------------|-----|-------|-------|-------|-------|-------|------------------|
| 78119-1319                | 78119-0319                | 31  | 32.00 | 28.40 | 14.20 | 17.90 | 15.60 | B                |
| 78119-1329                | 78119-0329                | 32  | 32.00 | 28.40 | 14.20 | 18.40 | 16.10 |                  |
| 78119-1339                | 78119-0339                | 33  | 32.00 | 28.40 | 14.20 | 18.90 | 16.60 |                  |
| 78119-1349                | 78119-0349                | 34  | 32.00 | 28.40 | 14.20 | 19.40 | 17.10 |                  |
| 78119-1359                | 78119-0359                | 35  | 32.00 | 28.40 | 14.20 | 19.90 | 17.60 |                  |
| 78119-1369                | 78119-0369                | 36  | 32.00 | 28.40 | 14.20 | 20.40 | 18.10 |                  |
| 78119-1379                | 78119-0379                | 37  | 32.00 | 28.40 | 14.20 | 20.90 | 18.60 |                  |
| 78119-1389                | 78119-0389                | 38  | 32.00 | 28.40 | 14.20 | 21.40 | 19.10 |                  |
| 78119-1399                | 78119-0399                | 39  | 44.00 | 40.40 | 20.20 | 21.90 | 19.60 |                  |
| 78119-1409                | 78119-0409                | 40  | 44.00 | 40.40 | 20.20 | 22.40 | 20.10 |                  |

|  |                            |   |   |                                   |                    |  |                        |                           |  |
|--|----------------------------|---|---|-----------------------------------|--------------------|--|------------------------|---------------------------|--|
| <b>REVISED</b><br>EC NO: J2013-1512<br>DRAWN BY: 2013/06/12<br>CHK: KIKI TAKAHASHI 2013/06/12<br>APPR: YUDAWA 2013/06/23 | <b>QUALITY SYMBOLS</b><br> | <b>GENERAL TOLERANCES (UNLESS SPECIFIED)</b>  |   | <b>DIMENSION STYLE</b><br>MM ONLY |                    | SCALE<br>NTS                                     | DESIGN UNITS<br>METRIC | THIRD ANGLE<br>PROJECTION |  |
|  |                            | 4 PLACES ± --- ± ---<br>3 PLACES ± --- ± ---<br>2 PLACES ± 0.15 ± ---<br>1 PLACE ± --- ± ---<br>0 PLACE ± ± | mm INCH<br>± --- ± ---<br>± --- ± ---<br>± --- ± ---<br>± ± | DRAWN BY<br>YLQ1A0                | DATE<br>2006/04/11 | TITLE<br>0.50MM PITCH, FPC CONN.<br>NON-ZIF, SMT |                        |                           |  |
|  |                            | ANGULAR ± 3°<br>DRAFT WHERE APPLICABLE<br>MUST REMAIN<br>WITHIN DIMENSIONS                                  |   | CHECKED BY<br>BOKOK               | DATE<br>2006/04/18 | <b>molex</b>                                     |                        |                           |  |
|  |                            | MATERIAL NO.<br>SEE TABLE   |   | APPROVED BY<br>PTLIM              | DATE<br>2006/04/18 | DOCUMENT NO.<br>SD-78119-001                     | SHEET NO.<br>7 OF 7    |                           |  |

9 8 7 6 5 4 3 2 1