

Excellent Integrated System Limited

Stocking Distributor

Click to view price, real time Inventory, Delivery & Lifecycle Information:

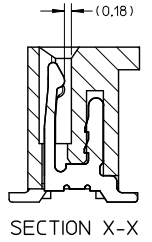
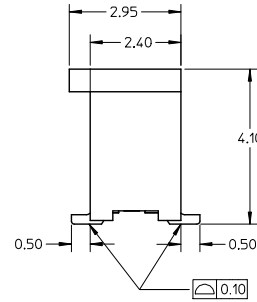
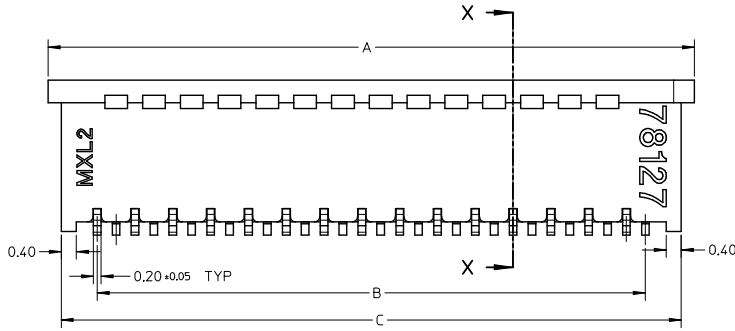
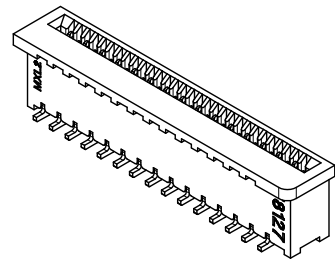
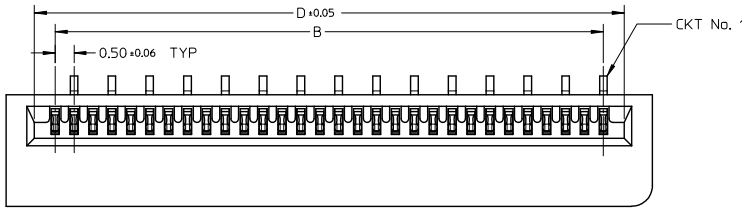
[Molex Connector Corporation](#)

[0781271239](#)

For any questions, you can email us directly:

sales@integrated-circuit.com

10 9 8 7 6 5 4 3 2 1



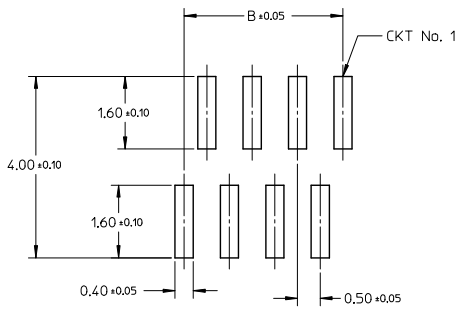
NOTE:

1. MATERIAL:
HOUSING: PA46 GLASS FILLED, UL94V-0, COLOR: NATURAL
TERMINAL: COPPER ALLOY
2. PLATING:
1) 0.10 μm MIN. GOLD PLATING OVER NICKEL PLATING OVERALL
2) 1-3 μm TIN-BISMUTH PLATING OVER NICKEL PLATING OVERALL
3. PRODUCT SPECIFICATION: PS-78119-001
4. PRODUCT ARE PACKED IN TAPE & REEL.

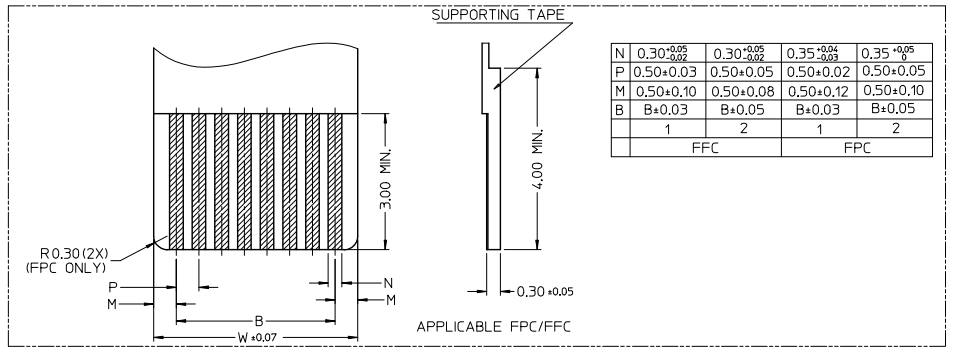
| | | | | | | | |
|---|----------------------|--|---------------------------------------|-------------------|---|--------------|------------------------|
| REVISED EC NO: J2013-0629 DRAWN: MORISHITA 2012/11/30 CHKD: TAKAHASHI 2012/11/30 APP: KINOKAWA 2012/12/11 | DESCRIPTION REV B | QUALITY SYMBOLS | GENERAL TOLERANCES (UNLESS SPECIFIED) | DIMENSION STYLE | SCALE | DESIGN UNITS | THIRD ANGLE PROJECTION |
| | | ▽=0 | mm INCH | MM ONLY | NTS | METRIC | |
| | | ▽=0 | 4 PLACES ± --- ± --- | DRAWN BY DATE | TITLE | | |
| | | ▽=0 | 3 PLACES ± --- ± --- | YLO1A0 2006/05/05 | 0.50MM PITCH, FPC CONN. NON-ZIF, SMT | | |
| | | 2 PLACES ± 0.15 ± --- | CHECKED BY DATE | | | | |
| | | 1 PLACE ± --- ± --- | BOKOK 2006/06/06 | | | | |
| | | 0 PLACE ± --- ± --- | APPROVED BY DATE | | | | |
| | | ANGULAR ± 3° | PTL IM 2006/06/06 | | | | |
| | | DRAFT WHERE APPLICABLE MUST REMAIN WITHIN DIMENSIONS | MATERIAL NO. | SEE TABLE | DOCUMENT NO. | SD-78127-001 | SHEET NO. 1 OF 7 |
| | | | SIZE | A3 | THIS DRAWING CONTAINS INFORMATION THAT IS PROPRIETARY TO MOLEX INCORPORATED AND SHOULD NOT BE USED WITHOUT WRITTEN PERMISSION | | |

9 8 7 6 5 4 3 2 1

10 9 8 7 6 5 4 3 2 1



RECOMMENDED PCB LAYOUT



| | | | | |
|---|--|--|--|--------------------------------------|
| N | 0.30 ^{+0.05} / _{-0.02} | 0.30 ^{+0.05} / _{-0.02} | 0.35 ^{+0.04} / _{-0.03} | 0.35 ^{+0.05} / ₀ |
| P | 0.50±0.03 | 0.50±0.05 | 0.50±0.02 | 0.50±0.05 |
| M | 0.50±0.10 | 0.50±0.08 | 0.50±0.12 | 0.50±0.10 |
| B | B±0.03 | B±0.05 | B±0.03 | B±0.05 |
| | 1 | 2 | 1 | 2 |
| | FFC | | FPC | |

| | | | | | | | | | |
|---|--|--|-------|------------------|------------|--|--------------|--------------------------------------|--|
| REVISED EC NO: J2013-0629 DRAWN: MORI SHITA 2012/11/30 CHECK: TAKAHASHI 2012/11/30 APPR: MORIKAWA 2012/12/11 | QUALITY SYMBOLS | GENERAL TOLERANCES (UNLESS SPECIFIED) | | DIMENSION STYLE | | SCALE | DESIGN UNITS | THIRD ANGLE PROJECTION | |
| | $\nabla=0$ $\nabla=0$ $\nabla=0$ | 4 PLACES | mm | INCH | MM ONLY | | NTS | METRIC | <input checked="" type="checkbox"/> THIRD ANGLE PROJECTION |
| | | 3 PLACES | ±--- | ±--- | DRAWN BY | DATE | TITLE | 0.50MM PITCH, FPC CONN. NON-ZIF, SMT | |
| | | 2 PLACES | ±0.15 | ±--- | CHECKED BY | DATE | | | |
| | 1 PLACE | ±--- | ±--- | APPROVED BY | DATE | MATERIAL NO. SEE TABLE DOCUMENT NO. SD-78127-001 SHEET NO. 2 OF 7 | | | |
| | 0 PLACE | ± | ± | PTLIM 2006/06/06 | | SIZE A THIS DRAWING CONTAINS INFORMATION THAT IS PROPRIETARY TO MOLEX INCORPORATED AND SHOULD NOT BE USED WITHOUT WRITTEN PERMISSION | | | |
| | | ANGULAR ± 3° | | | | | | | |
| | | DRAFT WHERE APPLICABLE MUST REMAIN WITHIN DIMENSIONS | | | | | | | |

9 8 7 6 5 4 3 2 1

10 9 8 7 6 5 4 3 2 1

GOLD PLATING TERMINAL ASSEMBLY PART NUMBERS

| ASSY P/N W/O PACKAGING | CKT | DIM A | DIM B | DIM C | DIM D | PLATING TYPE |
|---------------------------|-----|-------|-------|-------|-------|-----------------|
| 78127-0108 | 10 | 7.10 | 4.50 | 6.40 | 5.60 | 1 |
| 78127-0118 | 11 | 7.60 | 5.00 | 6.90 | 6.10 | |
| 78127-0128 | 12 | 8.10 | 5.50 | 7.40 | 6.60 | |
| 78127-0138 | 13 | 8.60 | 6.00 | 7.90 | 7.10 | |
| 78127-0148 | 14 | 9.10 | 6.50 | 8.40 | 7.60 | |
| 78127-0158 | 15 | 9.60 | 7.00 | 8.90 | 8.10 | |
| 78127-0168 | 16 | 10.10 | 7.50 | 9.40 | 8.60 | |
| 78127-0178 | 17 | 10.60 | 8.00 | 9.90 | 9.10 | |
| 78127-0188 | 18 | 11.10 | 8.50 | 10.40 | 9.60 | |
| 78127-0198 | 19 | 11.60 | 9.00 | 10.90 | 10.10 | |
| 78127-0208 | 20 | 12.10 | 9.50 | 11.40 | 10.60 | |
| 78127-0218 | 21 | 12.60 | 10.00 | 11.90 | 11.10 | |
| 78127-0228 | 22 | 13.10 | 10.50 | 12.40 | 11.60 | |
| 78127-0238 | 23 | 13.60 | 11.00 | 12.90 | 12.10 | |
| 78127-0248 | 24 | 14.10 | 11.50 | 13.40 | 12.60 | |
| 78127-0258 | 25 | 14.60 | 12.00 | 13.90 | 13.10 | |
| 78127-0268 | 26 | 15.10 | 12.50 | 14.40 | 13.60 | |
| 78127-0278 | 27 | 15.60 | 13.00 | 14.90 | 14.10 | |
| 78127-0288 | 28 | 16.10 | 13.50 | 15.40 | 14.60 | |
| 78127-0298 | 29 | 16.60 | 14.00 | 15.90 | 15.10 | |
| 78127-0308 | 30 | 17.10 | 14.50 | 16.40 | 15.60 | |

| ASSY P/N W/O PACKAGING | CKT | DIM A | DIM B | DIM C | DIM D | PLATING TYPE |
|---------------------------|-----|-------|-------|-------|-------|-----------------|
| 78127-0318 | 31 | 17.60 | 15.00 | 16.90 | 16.10 | 1 |
| 78127-0328 | 32 | 18.10 | 15.50 | 17.40 | 16.60 | |
| 78127-0338 | 33 | 18.60 | 16.00 | 17.90 | 17.10 | |
| 78127-0348 | 34 | 19.10 | 16.50 | 18.40 | 17.60 | |
| 78127-0358 | 35 | 19.60 | 17.00 | 18.90 | 18.10 | |
| 78127-0368 | 36 | 20.10 | 17.50 | 19.40 | 18.60 | |
| 78127-0378 | 37 | 20.60 | 18.00 | 19.90 | 19.10 | |
| 78127-0388 | 38 | 21.10 | 18.50 | 20.40 | 19.60 | |
| 78127-0398 | 39 | 21.60 | 19.00 | 20.90 | 20.10 | |
| 78127-0408 | 40 | 22.10 | 19.50 | 21.40 | 20.60 | |

| | | | | | | | | | |
|--|------------------------------------|--|-------------|--|------------|--------------|---|---------------------------|--|
| REVISED EC NO: J2013-0629 DRAWN: MORISHITA 2012/11/30 CHECKED: TAKAHASHI 2012/11/30 APPR: KIMURA 2012/11/11 | QUALITY SYMBOLS | GENERAL TOLERANCES (UNLESS SPECIFIED) | | DIMENSION STYLE MM ONLY | | SCALE NTS | DESIGN UNITS METRIC | THIRD ANGLE PROJECTION | |
| | | | mm | INCH | DRAWN BY | DATE | TITLE 0.50MM PITCH, FPC CONN. NON-ZIF, SMT DOCUMENT NO. SD-78127-001 SHEET NO. 3 OF 7 | | |
| | | 4 PLACES | ± --- | ± --- | YLO1A0 | 2006/05/05 | | | |
| | | 3 PLACES | ± --- | ± --- | CHECKED BY | DATE | | | |
| 2 PLACES | ± 0.15 | ± --- | BOKOK | 2006/06/06 | | | | | |
| 1 PLACE | ± --- | ± --- | APPROVED BY | DATE | | | | | |
| 0 PLACE | ± | ± | PTL IM | 2006/06/06 | | | | | |
| ANGULAR ± 3° DRAFT WHERE APPLICABLE MUST REMAIN WITHIN DIMENSIONS | | MATERIAL NO. SEE TABLE | | | | | | | |
| | | SIZE | | THIS DRAWING CONTAINS INFORMATION THAT IS PROPRIETARY TO MOLEX INCORPORATED AND SHOULD NOT BE USED WITHOUT WRITTEN PERMISSION | | | | | |

9 8 7 6 5 4 3 2 1

10 9 8 7 6 5 4 3 2 1

TIN-BISMUTH PLATING TERMINAL ASSEMBLY PART NUMBERS

| ASSY P/N W/O PACKAGING | CKT | DIM A | DIM B | DIM C | DIM D | PLATING TYPE |
|---------------------------|-----|-------|-------|-------|-------|-----------------|
| 78127-0109 | 10 | 7.10 | 4.50 | 6.40 | 5.60 | 2 |
| 78127-0119 | 11 | 7.60 | 5.00 | 6.90 | 6.10 | |
| 78127-0129 | 12 | 8.10 | 5.50 | 7.40 | 6.60 | |
| 78127-0139 | 13 | 8.60 | 6.00 | 7.90 | 7.10 | |
| 78127-0149 | 14 | 9.10 | 6.50 | 8.40 | 7.60 | |
| 78127-0159 | 15 | 9.60 | 7.00 | 8.90 | 8.10 | |
| 78127-0169 | 16 | 10.10 | 7.50 | 9.40 | 8.60 | |
| 78127-0179 | 17 | 10.60 | 8.00 | 9.90 | 9.10 | |
| 78127-0189 | 18 | 11.10 | 8.50 | 10.40 | 9.60 | |
| 78127-0199 | 19 | 11.60 | 9.00 | 10.90 | 10.10 | |
| 78127-0209 | 20 | 12.10 | 9.50 | 11.40 | 10.60 | |
| 78127-0219 | 21 | 12.60 | 10.00 | 11.90 | 11.10 | |
| 78127-0229 | 22 | 13.10 | 10.50 | 12.40 | 11.60 | |
| 78127-0239 | 23 | 13.60 | 11.00 | 12.90 | 12.10 | |
| 78127-0249 | 24 | 14.10 | 11.50 | 13.40 | 12.60 | |
| 78127-0259 | 25 | 14.60 | 12.00 | 13.90 | 13.10 | |
| 78127-0269 | 26 | 15.10 | 12.50 | 14.40 | 13.60 | |
| 78127-0279 | 27 | 15.60 | 13.00 | 14.90 | 14.10 | |
| 78127-0289 | 28 | 16.10 | 13.50 | 15.40 | 14.60 | |
| 78127-0299 | 29 | 16.60 | 14.00 | 15.90 | 15.10 | |
| 78127-0309 | 30 | 17.10 | 14.50 | 16.40 | 15.60 | |

| ASSY P/N W/O PACKAGING | CKT | DIM A | DIM B | DIM C | DIM D | PLATING TYPE |
|---------------------------|-----|-------|-------|-------|-------|-----------------|
| 78127-0319 | 31 | 17.60 | 15.00 | 16.90 | 16.10 | 2 |
| 78127-0329 | 32 | 18.10 | 15.50 | 17.40 | 16.60 | |
| 78127-0339 | 33 | 18.60 | 16.00 | 17.90 | 17.10 | |
| 78127-0349 | 34 | 19.10 | 16.50 | 18.40 | 17.60 | |
| 78127-0359 | 35 | 19.60 | 17.00 | 18.90 | 18.10 | |
| 78127-0369 | 36 | 20.10 | 17.50 | 19.40 | 18.60 | |
| 78127-0379 | 37 | 20.60 | 18.00 | 19.90 | 19.10 | |
| 78127-0389 | 38 | 21.10 | 18.50 | 20.40 | 19.60 | |
| 78127-0399 | 39 | 21.60 | 19.00 | 20.90 | 20.10 | |
| 78127-0409 | 40 | 22.10 | 19.50 | 21.40 | 20.60 | |

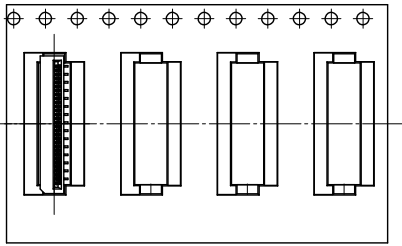
| | | | | | | | | |
|---|----------------------------|---|----------------------|-----------------------------------|--|------------------------------|------------------------|------------------------|
| REVISED EC NO. J2013-0629 DRAWN: MORISHITA 2012/11/30 CHECKED: AKAHASHI 2012/11/30 APPR: MORIKAWA 2012/12/11 | QUALITY SYMBOLS | GENERAL TOLERANCES (UNLESS SPECIFIED) | | DIMENSION STYLE MM ONLY | | SCALE NTS | DESIGN UNITS METRIC | THIRD ANGLE PROJECTION |
| | | 4 PLACES ± --- ± --- | DRAWN BY YLQ1A0 | DATE 2006/05/05 | TITLE 0.50MM PITCH, FPC CONN. NON-ZIF, SMT | | | |
| | | 3 PLACES ± --- ± --- | CHECKED BY BOKOK | DATE 2006/06/06 | | | | |
| | | 2 PLACES ± 0.15 ± --- 1 PLACE ± --- ± --- 0 PLACE ± ± | APPROVED BY PTLIM | DATE 2006/06/06 | MATERIAL NO. SEE TABLE | DOCUMENT NO. SD-78127-001 | SHEET NO. 4 OF 7 | |

ANGULAR ± 3 °
 DRAFT WHERE APPLICABLE MUST REMAIN WITHIN DIMENSIONS
 THIS DRAWING CONTAINS INFORMATION THAT IS PROPRIETARY TO MOLEX INCORPORATED AND SHOULD NOT BE USED WITHOUT WRITTEN PERMISSION

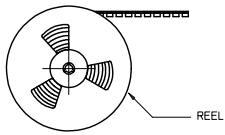
9 8 7 6 5 4 3 2 1

10 9 8 7 6 5 4 3 2 1

EMBOSSED TYPE A

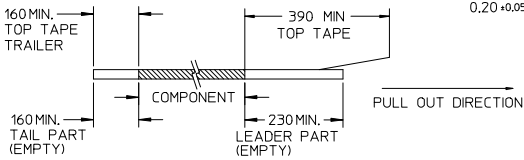


CUSTOMER
PULL OUT DIRECTION

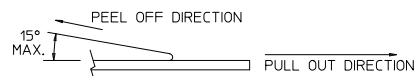


NOTES:

1. LEADER AND TRAILER TAPE



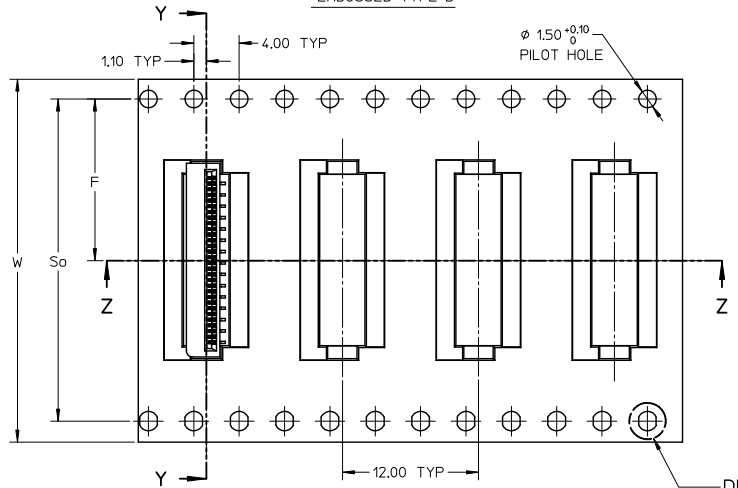
2. PEELING OFF FORCE OF THE TOP TAPE: 20-80gf.
(PEELING DIRECTION AS SHOWN IN FOLLOWING FIGURE)



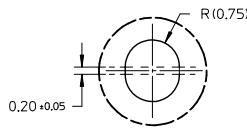
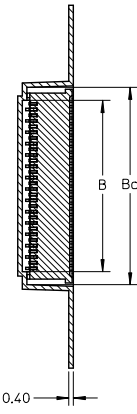
3. PACKAGING STANDARD IS AS PER EIA-481.

4. TAPE & REEL QUANTITY = 1000 PCS/REEL

EMBOSSED TYPE B

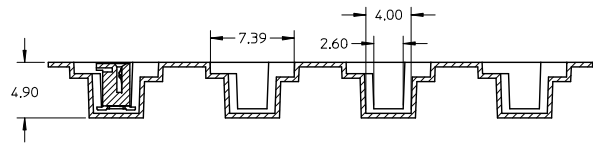


SECTION Y-Y



DETAIL 1

SECTION Z-Z



| | | | | | | | | |
|---|--------------------------------------|--|----------------------|----------------------------|--------------------|--|------------------------|------------------------|
| REVISED EC NO. 2013-0629 DRAWN: MORISHITA 2012/11/30 CHECK: TAKAHASHI 2012/11/30 APPR: KIMURAKAWA 2012/12/11 | QUALITY SYMBOLS ∇=0 ∇=0 ∇=0 | GENERAL TOLERANCES (UNLESS SPECIFIED) | | DIMENSION STYLE MM ONLY | | SCALE NTS | DESIGN UNITS METRIC | THIRD ANGLE PROJECTION |
| | | 4 PLACES ± --- ± --- | 3 PLACES ± --- ± --- | DRAWN BY YLQ1A0 | DATE 2006/05/05 | TITLE 0.50MM PITCH, FPC CONN. NON-ZIF, SMT | | |
| | | 2 PLACES ± 0.15 ± --- | 1 PLACE ± --- ± --- | CHECKED BY BOKOK | DATE 2006/06/06 | MATERIAL NO. SEE TABLE | | |
| | | 0 PLACE ± ± | ANGULAR ± 3° | APPROVED BY PTL IM | DATE 2006/06/06 | DOCUMENT NO. SD-78127-001 | SHEET NO. 5 OF 7 | |
| DRAFT WHERE APPLICABLE MUST REMAIN WITHIN DIMENSIONS | | THIS DRAWING CONTAINS INFORMATION THAT IS PROPRIETARY TO MOLEX INCORPORATED AND SHOULD NOT BE USED WITHOUT WRITTEN PERMISSION | | | | | | |

9 8 7 6 5 4 3 2 1

10 9 8 7 6 5 4 3 2 1

GOLD PLATING TERMINAL ASSEMBLY PART NUMBERS

| ASSY P/N PACKED IN T&R | ASSY P/N W/O PACKAGING | CKT | W | So | F | Bo | B | EMBOSSED TYPE | ASSY P/N PACKED IN T&R | ASSY P/N W/O PACKAGING | CKT | W | So | F | Bo | B | EMBOSSED TYPE | |
|---------------------------|---------------------------|-----|-------|-------|-------|-------|-------|------------------|---------------------------|---------------------------|-----|-------|-------|-------|-------|-------|------------------|--|
| 78127-1108 | 78127-0108 | 10 | 24.00 | - | 11.50 | 7.40 | 5.10 | A | 78127-1318 | 78127-0318 | 31 | 32.00 | 28.40 | 14.20 | 17.90 | 15.60 | B | |
| 78127-1118 | 78127-0118 | 11 | 24.00 | - | 11.50 | 7.90 | 5.60 | | 78127-1328 | 78127-0328 | 32 | 32.00 | 28.40 | 14.20 | 18.40 | 16.10 | | |
| 78127-1128 | 78127-0128 | 12 | 24.00 | - | 11.50 | 8.40 | 6.10 | | 78127-1338 | 78127-0338 | 33 | 32.00 | 28.40 | 14.20 | 18.90 | 16.60 | | |
| 78127-1138 | 78127-0138 | 13 | 24.00 | - | 11.50 | 8.90 | 6.60 | | 78127-1348 | 78127-0348 | 34 | 32.00 | 28.40 | 14.20 | 19.40 | 17.10 | | |
| 78127-1148 | 78127-0148 | 14 | 24.00 | - | 11.50 | 9.40 | 7.10 | | 78127-1358 | 78127-0358 | 35 | 32.00 | 28.40 | 14.20 | 19.90 | 17.60 | | |
| 78127-1158 | 78127-0158 | 15 | 24.00 | - | 11.50 | 9.90 | 7.60 | | 78127-1368 | 78127-0368 | 36 | 32.00 | 28.40 | 14.20 | 20.40 | 18.10 | | |
| 78127-1168 | 78127-0168 | 16 | 24.00 | - | 11.50 | 10.40 | 8.10 | | 78127-1378 | 78127-0378 | 37 | 32.00 | 28.40 | 14.20 | 20.90 | 18.60 | | |
| 78127-1178 | 78127-0178 | 17 | 24.00 | - | 11.50 | 10.90 | 8.60 | | 78127-1388 | 78127-0388 | 38 | 32.00 | 28.40 | 14.20 | 21.40 | 19.10 | | |
| 78127-1188 | 78127-0188 | 18 | 24.00 | - | 11.50 | 11.40 | 9.10 | | 78127-1398 | 78127-0398 | 39 | 44.00 | 40.40 | 20.20 | 21.90 | 19.60 | | |
| 78127-1198 | 78127-0198 | 19 | 24.00 | - | 11.50 | 11.90 | 9.60 | | 78127-1408 | 78127-0408 | 40 | 44.00 | 40.40 | 20.20 | 22.40 | 20.10 | | |
| 78127-1208 | 78127-0208 | 20 | 24.00 | - | 11.50 | 12.40 | 10.10 | | | | | | | | | | | |
| 78127-1218 | 78127-0218 | 21 | 32.00 | 28.40 | 14.20 | 12.90 | 10.60 | B | | | | | | | | | | |
| 78127-1228 | 78127-0228 | 22 | 32.00 | 28.40 | 14.20 | 13.40 | 11.10 | | | | | | | | | | | |
| 78127-1238 | 78127-0238 | 23 | 32.00 | 28.40 | 14.20 | 13.90 | 11.60 | | | | | | | | | | | |
| 78127-1248 | 78127-0248 | 24 | 32.00 | 28.40 | 14.20 | 14.40 | 12.10 | | | | | | | | | | | |
| 78127-1258 | 78127-0258 | 25 | 32.00 | 28.40 | 14.20 | 14.90 | 12.60 | | | | | | | | | | | |
| 78127-1268 | 78127-0268 | 26 | 32.00 | 28.40 | 14.20 | 15.40 | 13.10 | | | | | | | | | | | |
| 78127-1278 | 78127-0278 | 27 | 32.00 | 28.40 | 14.20 | 15.90 | 13.60 | | | | | | | | | | | |
| 78127-1288 | 78127-0288 | 28 | 32.00 | 28.40 | 14.20 | 16.40 | 14.10 | | | | | | | | | | | |
| 78127-1298 | 78127-0298 | 29 | 32.00 | 28.40 | 14.20 | 16.90 | 14.60 | | | | | | | | | | | |
| 78127-1308 | 78127-0308 | 30 | 32.00 | 28.40 | 14.20 | 17.40 | 15.10 | | | | | | | | | | | |

| REVISED EC NO. J2013-0629 DRAWN: IMORISHITA 2012/11/30 CHECK: TAKAHASHI 2012/11/30 APPR: IMORIKAWA 2012/12/11 | QUALITY SYMBOLS | GENERAL TOLERANCES (UNLESS SPECIFIED) | DIMENSION STYLE | SCALE | DESIGN UNITS | THIRD ANGLE PROJECTION | | | | | | | | | | | | | | | | | | |
|---|--|--|-----------------|--------------|--------------|------------------------|------|--|----------|------|--------|------------|------------|------|---------|------------|-------------|---------|-------|------------|---------|--------------------------------------|--------|--|
| | $\sqrt{\text{ }}=0$ $\sqrt{\text{ }}=0$ $\sqrt{\text{ }}=0$ | <table border="1"> <tr><th></th><th>mm</th><th>INCH</th></tr> <tr><td>4 PLACES</td><td>±---</td><td>±---</td></tr> <tr><td>3 PLACES</td><td>±---</td><td>±---</td></tr> <tr><td>2 PLACES</td><td>±0.15</td><td>±---</td></tr> <tr><td>1 PLACE</td><td>±---</td><td>±---</td></tr> <tr><td>0 PLACE</td><td>±</td><td>±</td></tr> </table> | | mm | INCH | 4 PLACES | ±--- | ±--- | 3 PLACES | ±--- | ±--- | 2 PLACES | ±0.15 | ±--- | 1 PLACE | ±--- | ±--- | 0 PLACE | ± | ± | MM ONLY | NTS | METRIC | |
| | | mm | INCH | | | | | | | | | | | | | | | | | | | | | |
| | 4 PLACES | ±--- | ±--- | | | | | | | | | | | | | | | | | | | | | |
| 3 PLACES | ±--- | ±--- | | | | | | | | | | | | | | | | | | | | | | |
| 2 PLACES | ±0.15 | ±--- | | | | | | | | | | | | | | | | | | | | | | |
| 1 PLACE | ±--- | ±--- | | | | | | | | | | | | | | | | | | | | | | |
| 0 PLACE | ± | ± | | | | | | | | | | | | | | | | | | | | | | |
| DESCRIPTION | <table border="1"> <tr><th></th><th>mm</th><th>INCH</th></tr> <tr><td>ANGULAR</td><td>± 3°</td><td></td></tr> </table> | | mm | INCH | ANGULAR | ± 3° | | <table border="1"> <tr><th>DRAWN BY</th><th>DATE</th></tr> <tr><td>YLQIAO</td><td>2006/05/05</td></tr> <tr><th>CHECKED BY</th><th>DATE</th></tr> <tr><td>BOKOK</td><td>2006/06/06</td></tr> <tr><th>APPROVED BY</th><th>DATE</th></tr> <tr><td>PTLIM</td><td>2006/06/06</td></tr> </table> | DRAWN BY | DATE | YLQIAO | 2006/05/05 | CHECKED BY | DATE | BOKOK | 2006/06/06 | APPROVED BY | DATE | PTLIM | 2006/06/06 | TITLE | 0.50MM PITCH, FPC CONN. NON-ZIF, SMT | | |
| | mm | INCH | | | | | | | | | | | | | | | | | | | | | | |
| ANGULAR | ± 3° | | | | | | | | | | | | | | | | | | | | | | | |
| DRAWN BY | DATE | | | | | | | | | | | | | | | | | | | | | | | |
| YLQIAO | 2006/05/05 | | | | | | | | | | | | | | | | | | | | | | | |
| CHECKED BY | DATE | | | | | | | | | | | | | | | | | | | | | | | |
| BOKOK | 2006/06/06 | | | | | | | | | | | | | | | | | | | | | | | |
| APPROVED BY | DATE | | | | | | | | | | | | | | | | | | | | | | | |
| PTLIM | 2006/06/06 | | | | | | | | | | | | | | | | | | | | | | | |
| REV B | DRAFT WHERE APPLICABLE WITHIN DIMENSIONS | SEE TABLE | MATERIAL NO. | DOCUMENT NO. | SD-78127-001 | SHEET NO. 6 OF 7 | | | | | | | | | | | | | | | | | | |

9 8 7 6 5 4 3 2 1

10 9 8 7 6 5 4 3 2 1

TIN-BISMUTH PLATING TERMINAL ASSEMBLY PART NUMBERS

| ASSY P/N PACKED IN T&R | ASSY P/N W/O PACKAGING | CKT | W | So | F | Bo | B | EMBOSSED TYPE |
|---------------------------|---------------------------|-----|-------|-------|-------|-------|-------|------------------|
| 78127-1109 | 78127-0109 | 10 | 24.00 | - | 11.50 | 7.40 | 5.10 | A |
| 78127-1119 | 78127-0119 | 11 | 24.00 | - | 11.50 | 7.90 | 5.60 | |
| 78127-1129 | 78127-0129 | 12 | 24.00 | - | 11.50 | 8.40 | 6.10 | |
| 78127-1139 | 78127-0139 | 13 | 24.00 | - | 11.50 | 8.90 | 6.60 | |
| 78127-1149 | 78127-0149 | 14 | 24.00 | - | 11.50 | 9.40 | 7.10 | |
| 78127-1159 | 78127-0159 | 15 | 24.00 | - | 11.50 | 9.90 | 7.60 | |
| 78127-1169 | 78127-0169 | 16 | 24.00 | - | 11.50 | 10.40 | 8.10 | |
| 78127-1179 | 78127-0179 | 17 | 24.00 | - | 11.50 | 10.90 | 8.60 | |
| 78127-1189 | 78127-0189 | 18 | 24.00 | - | 11.50 | 11.40 | 9.10 | |
| 78127-1199 | 78127-0199 | 19 | 24.00 | - | 11.50 | 11.90 | 9.60 | |
| 78127-1209 | 78127-0209 | 20 | 24.00 | - | 11.50 | 12.40 | 10.10 | B |
| 78127-1219 | 78127-0219 | 21 | 32.00 | 28.40 | 14.20 | 12.90 | 10.60 | |
| 78127-1229 | 78127-0229 | 22 | 32.00 | 28.40 | 14.20 | 13.40 | 11.10 | |
| 78127-1239 | 78127-0239 | 23 | 32.00 | 28.40 | 14.20 | 13.90 | 11.60 | |
| 78127-1249 | 78127-0249 | 24 | 32.00 | 28.40 | 14.20 | 14.40 | 12.10 | |
| 78127-1259 | 78127-0259 | 25 | 32.00 | 28.40 | 14.20 | 14.90 | 12.60 | |
| 78127-1269 | 78127-0269 | 26 | 32.00 | 28.40 | 14.20 | 15.40 | 13.10 | |
| 78127-1279 | 78127-0279 | 27 | 32.00 | 28.40 | 14.20 | 15.90 | 13.60 | |
| 78127-1289 | 78127-0289 | 28 | 32.00 | 28.40 | 14.20 | 16.40 | 14.10 | |
| 78127-1299 | 78127-0299 | 29 | 32.00 | 28.40 | 14.20 | 16.90 | 14.60 | |
| 78127-1309 | 78127-0309 | 30 | 32.00 | 28.40 | 14.20 | 17.40 | 15.10 | |

| ASSY P/N PACKED IN T&R | ASSY P/N W/O PACKAGING | CKT | W | So | F | Bo | B | EMBOSSED TYPE |
|---------------------------|---------------------------|-----|-------|-------|-------|-------|-------|------------------|
| 78127-1319 | 78127-0319 | 31 | 32.00 | 28.40 | 14.20 | 17.90 | 15.60 | B |
| 78127-1329 | 78127-0329 | 32 | 32.00 | 28.40 | 14.20 | 18.40 | 16.10 | |
| 78127-1339 | 78127-0339 | 33 | 32.00 | 28.40 | 14.20 | 18.90 | 16.60 | |
| 78127-1349 | 78127-0349 | 34 | 32.00 | 28.40 | 14.20 | 19.40 | 17.10 | |
| 78127-1359 | 78127-0359 | 35 | 32.00 | 28.40 | 14.20 | 19.90 | 17.60 | |
| 78127-1369 | 78127-0369 | 36 | 32.00 | 28.40 | 14.20 | 20.40 | 18.10 | |
| 78127-1379 | 78127-0379 | 37 | 32.00 | 28.40 | 14.20 | 20.90 | 18.60 | |
| 78127-1389 | 78127-0389 | 38 | 32.00 | 28.40 | 14.20 | 21.40 | 19.10 | |
| 78127-1399 | 78127-0399 | 39 | 44.00 | 40.40 | 20.20 | 21.90 | 19.60 | |
| 78127-1409 | 78127-0409 | 40 | 44.00 | 40.40 | 20.20 | 22.40 | 20.10 | |

| | | | | | | | | |
|---|----------------------------|---|--|-----------------------------------|--------------------|--|------------------------------|------------------------|
| REVISED EC. NO.: I2013-0629 DRAWN: MORI SHITA 2012/11/30 CHKD: KAKIHASHI 2012/11/30 APPR: MORI KAWA 2012/12/11 | QUALITY SYMBOLS | GENERAL TOLERANCES (UNLESS SPECIFIED) | | DIMENSION STYLE MM ONLY | | SCALE NTS | DESIGN UNITS METRIC | THIRD ANGLE PROJECTION |
| | | 4 PLACES ± --- ± --- 3 PLACES ± --- ± --- 2 PLACES ± 0.15 ± --- 1 PLACE ± --- ± --- 0 PLACE ± ± | mm INCH ± --- ± --- ± 0.15 ± --- ± --- ± --- ± ± | DRAWN BY YLQ1A0 | DATE 2006/05/05 | TITLE 0.50MM PITCH, FPC CONN. NON-ZIF, SMT | | |
| | | ANGULAR ± 3 ° | | CHECKED BY BOKOK | DATE 2006/06/06 | | | |
| | | DRAFT WHERE APPLICABLE MUST REMAIN WITHIN DIMENSIONS | | APPROVED BY PTL IM | DATE 2006/06/06 | | DOCUMENT NO. SD-78127-001 | SHEET NO. 7 OF 7 |

9 8 7 6 5 4 3 2 1