



Distributor of Molex Connector Corporation: Excellent Integrated System Limited
Datasheet of 0791099210 - Connector Receptacle 10 Position 0.079" (2.00mm) Gold Surface Mount

Contact us: sales@integrated-circuit.com Website: www.integrated-circuit.com

Excellent Integrated System Limited

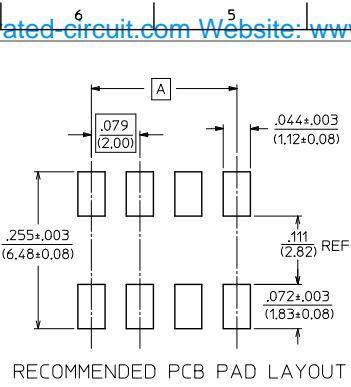
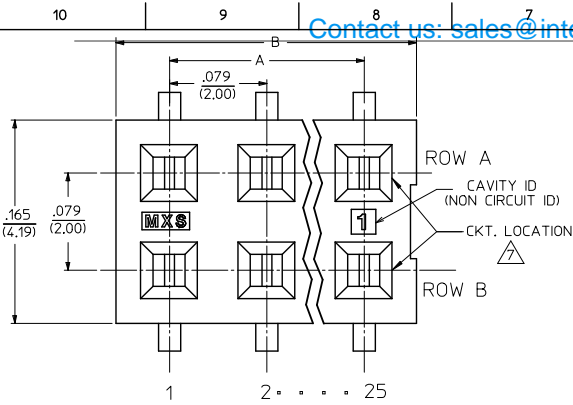
Stocking Distributor

Click to view price, real time Inventory, Delivery & Lifecycle Information:

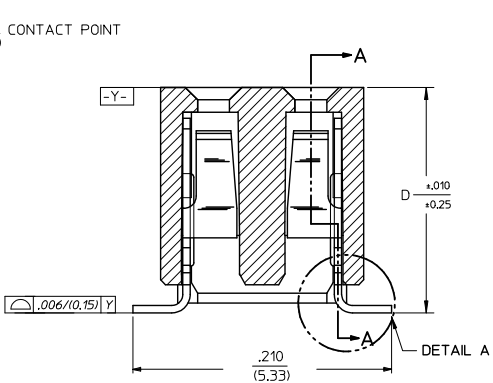
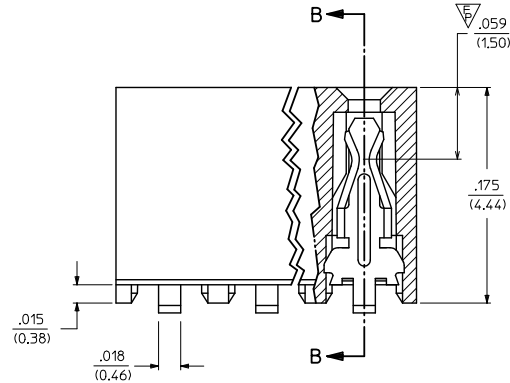
[Molex Connector Corporation](#)
[0791099210](#)

For any questions, you can email us directly:
sales@integrated-circuit.com

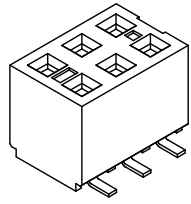
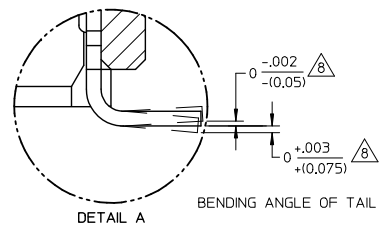
Contact us: sales@integrated-circuit.com Website: www.integrated-circuit.com



- NOTES:**
- HOUSING MATERIAL: LCP, GLASS FILLED, UL 94V-0 COLOUR BLACK.
 - TERMINAL MATERIAL: PHOSPHOR BRONZE
 - SEE APPROPRIATE SHEET FOR CIRCUIT SIZE, PART NUMBERS AND OVERALL DIMENSIONS.
 - 6 CKT WITHOUT CAP ASSY IS SHOWN FOR ILLUSTRATION ONLY.
 - REFER TO PRODUCT SPEC PS-79107.
 - TAPE PACKAGING PER PK-70873-0259
- △ CKT LOCATIONS ARE NUMBERED FROM LEFT TO RIGHT WHEN VIEWING ASSY FROM TOP WITH THE GATE RECESS ON THE RIGHT AS SHOWN.
- △ MEASUREMENT IS TAKEN BETWEEN THE TANGENT OF THE TOE TO TIP OF THE TERMINAL.



- PLATING OPTION:**
- 30u" (0.75um) MIN. GOLD PLATE IN SELECTED AREA AND 75u" (1.88um) MIN. TIN PLATE IN SELECTED AREA OVER 50u" (1.25um) MIN. NICKEL OVERALL.
 - 15u" (0.38um) MIN. GOLD PLATE IN SELECTED AREA AND 75u" (1.88um) MIN. TIN PLATE IN SELECTED AREA OVER 50u" (1.25um) MIN. NICKEL OVERALL.
 - 5u" (0.13um) MIN. GOLD PLATE IN SELECTED AREA AND 75u" (1.88um) MIN. TIN PLATE IN SELECTED AREA OVER 50u" (1.25um) MIN. NICKEL OVERALL.

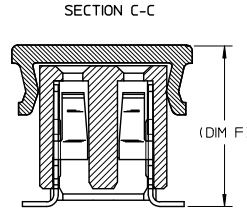
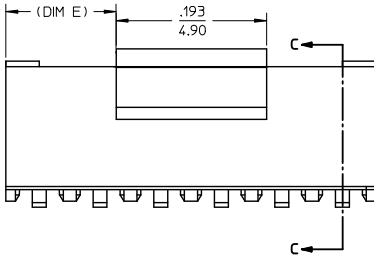
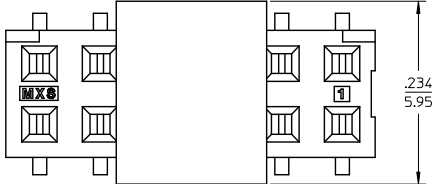


SHT 4, +791099318 EC NO: S2014-0515 DRAWN BY: 2013/11/26 CHKD: FANNY WONG 2014/02/18 APPR: LBLEE 2014/02/18	QUALITY SYMBOLS ▽=0 ▽=0 ▽=1	GENERAL TOLERANCES (UNLESS SPECIFIED)		DIMENSION STYLE		SCALE	DESIGN UNITS	THIRD ANGLE PROJECTION	
		mm	INCH	IN/MM		NTS	INCH		
REV A3	DESCRIPTION	4 PLACES	± ---	± ---	DRAWN BY	DATE	TITLE		
		3 PLACES	± ---	± .010	SKANG	2010/10/28	2MM DUAL ROW VERTICAL RECEPTACLE, SMT		
		2 PLACES	± 0.25	± .015	CHECKED BY	DATE	MOLEX INCORPORATED		
		1 PLACE	± 0.38	± ---	ATSEE	2010/12/02	SD-79109-006		
		ANGULAR ± 3°		APPROVED BY	DATE	DOCUMENT NO.		SHEET NO.	
		DRAFT WHERE APPLICABLE MUST REMAIN WITHIN DIMENSIONS		MLONG	2010/12/03	SD-79109-006		1 OF 4	
				SIZE	THIS DRAWING CONTAINS INFORMATION THAT IS PROPRIETARY TO MOLEX INCORPORATED AND SHOULD NOT BE USED WITHOUT WRITTEN PERMISSION				

Contact us: sales@integrated-circuit.com Website: www.integrated-circuit.com

PARTS WITHOUT PEG

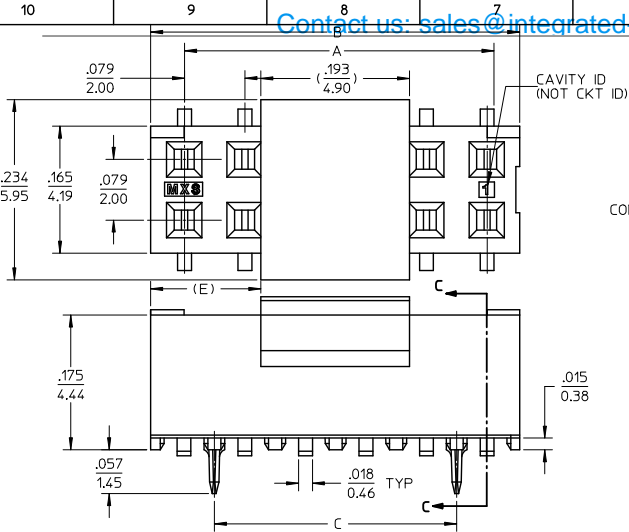
CKT. SIZE	DIM. "A"		DIM. "B"		DIM. "C"		DIM. "D"		DIM. "E"		DIM. "F"		ITEM NO.	PLATING OPTION SEE SHEET 1
	INCH	MM	INCH	MM	INCH	MM	INCH	MM	INCH	MM	INCH	MM		
4	.079	(2.00)	.165	(4.19)	-	-	.183	(4.65)	-	-	.207	(5.25)	79109-9104	1
8	.236	(6.00)	.322	(8.19)	-	-	.183	(4.65)	.065	(1.65)			79109-9208	2
10	.315	(8.00)	.401	(10.19)	-	-	.183	(4.65)	.104	(2.65)			79109-9210	2
12	.394	(10.00)	.480	(12.19)	-	-	.183	(4.65)	.144	(3.65)			79109-9212	2
14	.472	(12.00)	.559	(14.19)	-	-	.183	(4.65)	.183	(4.65)			79109-9214	2



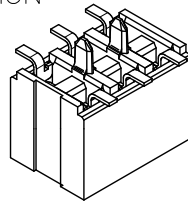
SHT 4, +791099318 EC NO: S2014-0515 DRAWN BY: 2013/11/26 CHKD: FANNY WONG 2014/02/18 APPR: LBLEE 2014/02/18	QUALITY SYMBOLS	GENERAL TOLERANCES (UNLESS SPECIFIED)		DIMENSION STYLE IN/MM		SCALE NTS	DESIGN UNITS INCH	THIRD ANGLE PROJECTION
	$\nabla=0$ $\nabla=0$ $\nabla=0$	4 PLACES	mm	INCH	DRAWN BY	DATE	TITLE	
		3 PLACES	± ---	± ---	SKANG	2010/10/28	2MM DUAL ROW VERTICAL RECEPTACLE, SMT	
		2 PLACES	± 0.25	± .010	CHECKED BY	DATE		MOLEX INCORPORATED
	1 PLACE	± 0.38	± ---	ATSEE	2010/12/02			
		ANGULAR ± 3°		APPROVED BY	DATE			
		DRAFT WHERE APPLICABLE MUST REMAIN WITHIN DIMENSIONS		MLONG	2010/12/03			
				MATERIAL NO.		MOLEX		
				SEE TABLE		DOCUMENT NO.		
				SIZE		SD-79109-006		
				THIS DRAWING CONTAINS INFORMATION THAT IS PROPRIETARY TO MOLEX INCORPORATED AND SHOULD NOT BE USED WITHOUT WRITTEN PERMISSION				SHEET NO. 2 OF 4

Contact us: sales@integrated-circuit.com Website: www.integrated-circuit.com

PEG OPTION

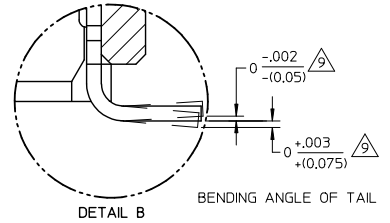
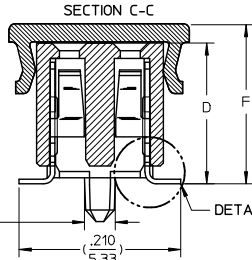


CONNECTOR WITH CAP

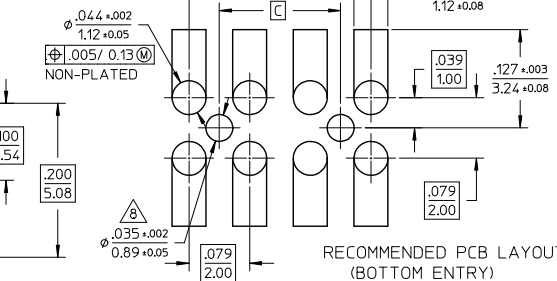
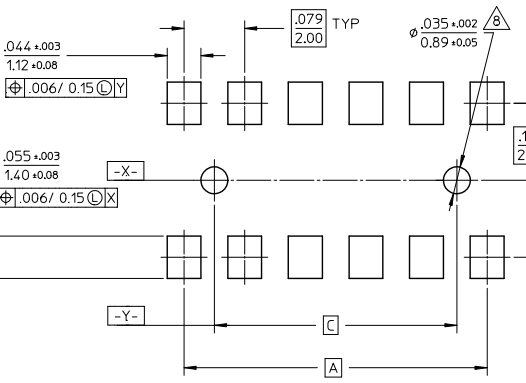


NOTES:

- 1 - HOUSING MATERIAL: GLASS FILLED HIGH TEMP. THERMOPLASTIC. COLOR: BLACK.
- 2 - TERMINAL MATERIAL: PHOSPHOR BRONZE
- 3 - SEE APPROPRIATE SHEET FOR CIRCUIT SIZE, PART NUMBERS AND OVER-ALL DIMENSIONS.
- 4 - FOR ILLUSTRATION, 6&12 CIRCUIT ASSEMBLY SHOWN.
- 5 - REFER TO PRODUCT SPECIFICATION PS-79107.
- 6 - TAPE PACKAGING PER PK-70873-0259.
- 7 - SEE PSX-79107 FOR SUGGESTED BOTTOM ENTRY PIN LENGTHS.
- 8 - .035 DIA. FOR PRESS FIT ONLY. USE .039±.002 FOR ALIGNMENT PURPOSES ON PICK AND PLACE.
- 9 - MEASUREMENT IS TAKEN BETWEEN THE TANGENT OF THE TOE TO TIP OF THE TERMINAL.



BENDING ANGLE OF TAIL



RECOMMENDED PCB LAYOUT

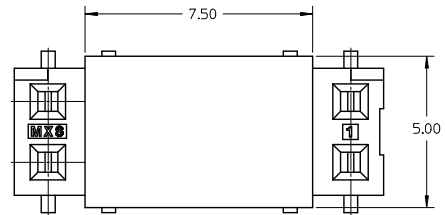
RECOMMENDED PCB LAYOUT (BOTTOM ENTRY)

SHT 4, +791099318 EC NO. S2014-0515 DRAWN BY: CHYKDFANNYONG CHKD: FANNYONG APPR: LBLEE 2013/11/26 2014/02/18 2014/02/18	QUALITY SYMBOLS √=0 √=0 √=0	GENERAL TOLERANCES (UNLESS SPECIFIED)		DIMENSION STYLE		SCALE	DESIGN UNITS	THIRD ANGLE PROJECTION	
		mm	INCH	IN/MM		NTS	INCH		
A3	DESCRIPTION	4 PLACES	±---	±---	DRAWN BY: SKANG	DATE: 2010/10/28	TITLE: 2MM DUAL ROW VERTICAL RECEPTACLE, SMT		
		3 PLACES	±---	±.010	CHECKED BY: ATSEE	DATE: 2010/12/02			
		2 PLACES	±0.25	±.015	APPROVED BY: MLONG	DATE: 2010/12/03	MOLEX INCORPORATED		
		1 PLACE	±0.38	±---	MATERIAL NO. SEE TABLE	DOCUMENT NO. SD-79109-006			
DRAFT WHERE APPLICABLE MUST REMAIN WITHIN DIMENSIONS		ANGULAR ± 3°		THIS DRAWING CONTAINS INFORMATION THAT IS PROPRIETARY TO MOLEX INCORPORATED AND SHOULD NOT BE USED WITHOUT WRITTEN PERMISSION					

Contact us: sales@integrated-circuit.com Website: www.integrated-circuit.com

PARTS WITH PEG

CKT. SIZE	DIM. "A"		DIM. "B"		DIM. "C"		DIM. "D"		DIM. "E"		DIM. "F"		ASSEMBLY P/N WITH CAP	ASSEMBLY P/N WITH KAPTON TAPE	PLATING OPTION SEE SHEET 1
	INCH	MM	INCH	MM	INCH	MM	INCH	MM	INCH	MM	INCH	MM			
8	.236	(6.00)	.322	(8.19)	.157	(4.00)	.183	(4.65)	.065	(1.65)	.207	(5.25)	79109-9108	-	1
18	.630	(16.00)	.716	(18.19)	.551	(14.00)	.183	(4.65)	.262	(6.65)	.207	(5.25)	79109-9118	79109-9318	1



12CKT WITH KAPTON TAPE ILLUSTRATION

SHT 4, +791099318 EC. NO. S2014-0515 DRAWN BY: 2013/11/26 CHKD: FANNY WONG 2014/02/18 APPR: LBLEE 2014/02/18	QUALITY SYMBOLS	GENERAL TOLERANCES (UNLESS SPECIFIED)		DIMENSION STYLE IN/MM		SCALE NTS	DESIGN UNITS INCH	THIRD ANGLE PROJECTION
	$\nabla=0$	4 PLACES	± ---	± ---	DRAWN BY	DATE	TITLE	
	$\nabla=0$	3 PLACES	± ---	± .010	SKANG	2010/10/28	2MM DUAL ROW VERTICAL RECEPTACLE, SMT	
	$\nabla=0$	2 PLACES	± 0.25	± .015	CHECKED BY	DATE		
	1 PLACE	± 0.38	± ---	ATSEE	2010/12/02	MOLEX INCORPORATED		
		ANGULAR ± 3°		APPROVED BY	DATE	DOCUMENT NO.	SHEET NO.	
		DRAFT WHERE APPLICABLE MUST REMAIN WITHIN DIMENSIONS		MLONG	2010/12/03	SD-79109-006	4 OF 4	
				MATERIAL NO.	SEE TABLE	THIS DRAWING CONTAINS INFORMATION THAT IS PROPRIETARY TO MOLEX INCORPORATED AND SHOULD NOT BE USED WITHOUT WRITTEN PERMISSION		