

Excellent Integrated System Limited

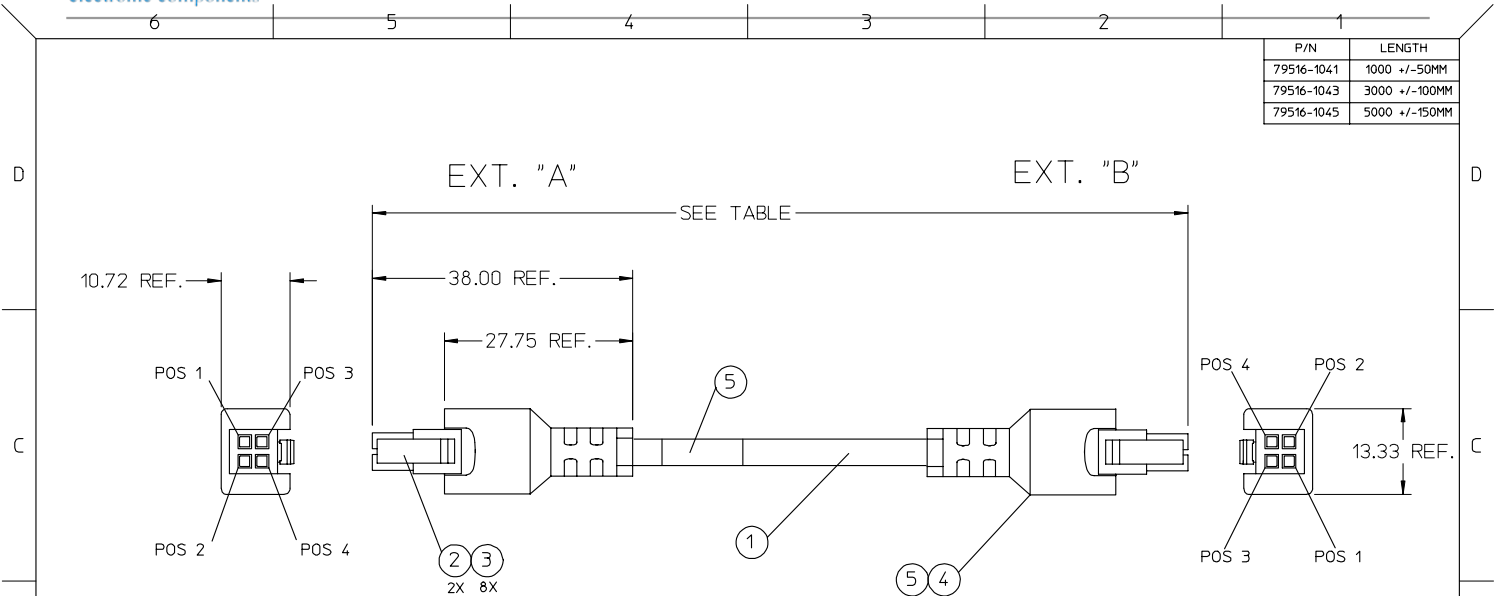
Stocking Distributor

Click to view price, real time Inventory, Delivery & Lifecycle Information:

[Molex Connector Corporation](#)
[0795161045](#)

For any questions, you can email us directly:
sales@integrated-circuit.com

P/N	LENGTH
79516-1041	1000 +/-50MM
79516-1043	3000 +/-100MM
79516-1045	5000 +/-150MM



NOTES:

- PIN CONNECTION ACCORDING TO TABLE.
- LABEL CABLE WITH FOLLOWING INFORMATION:
P/N (SEE TABLE)
REV. (SEE REVISION TABLE)
M/D WW/YY
ASSEMBLED IN MEXICO

WIRING CHART

EXT. "A"	EXT. "B"
POS. 1	POS. 1
POS. 2	POS. 2
POS. 3	POS. 3
POS. 4	POS. 4

ROHS

ITEM	P/N	DESCRIPTION	QTY
6	0799426019	PLASTIC LABEL EPC#R-TW10F	1 PC
5	0799300108	TAPON	2 PC
4	0899920428	PVC 15% MF BLACK UL94V-2	A/R
3	0430300004	MicroFit 3.0 F Crp Term Chn Tin 26-30	8 PC
2	0430250400	MicroFit 3.0 DR Rcpt PnlMnt 2Ckt	2 PC
1	0799232211	CABLE 4 COND, 26AWG, JACKETED	A/R

REV	DESCRIPTION	QUALITY SYMBOLS	GENERAL TOLERANCES (UNLESS SPECIFIED)		DIMENSION STYLE		SCALE	DESIGN UNITS	THIRD ANGLE PROJECTION
			mm	INCH	MM ONLY				
4	PLACES	±	---	±	---				
3	PLACES	±	---	±	---				
2	PLACES	±	---	±	---				
1	PLACE	±	---	±	---				
			ANGULAR ±		---				
DRAFT WHERE APPLICABLE MUST REMAIN WITHIN DIMENSIONS					DRAWN BY: AOROZCO DATE: 10/10/2003		TITLE: MICRO-FIT OVERMOLDED ASSEMBLY 4 CKT 1, 3 & 5 MTS.		
					CHECKED BY: AOROZCO DATE: 10/10/2003		MOLEX INCORPORATED		
					APPROVED BY: ACUEVAS DATE: 10/10/2003		DOCUMENT NO. SD-79516-002		
					MATERIAL NO. VARIOS		SHEET NO. 1 OF 1		
					SIZE A		THIS DRAWING CONTAINS INFORMATION THAT IS PROPRIETARY TO MOLEX INCORPORATED AND SHOULD NOT BE USED WITHOUT WRITTEN PERMISSION		