

## Excellent Integrated System Limited

Stocking Distributor

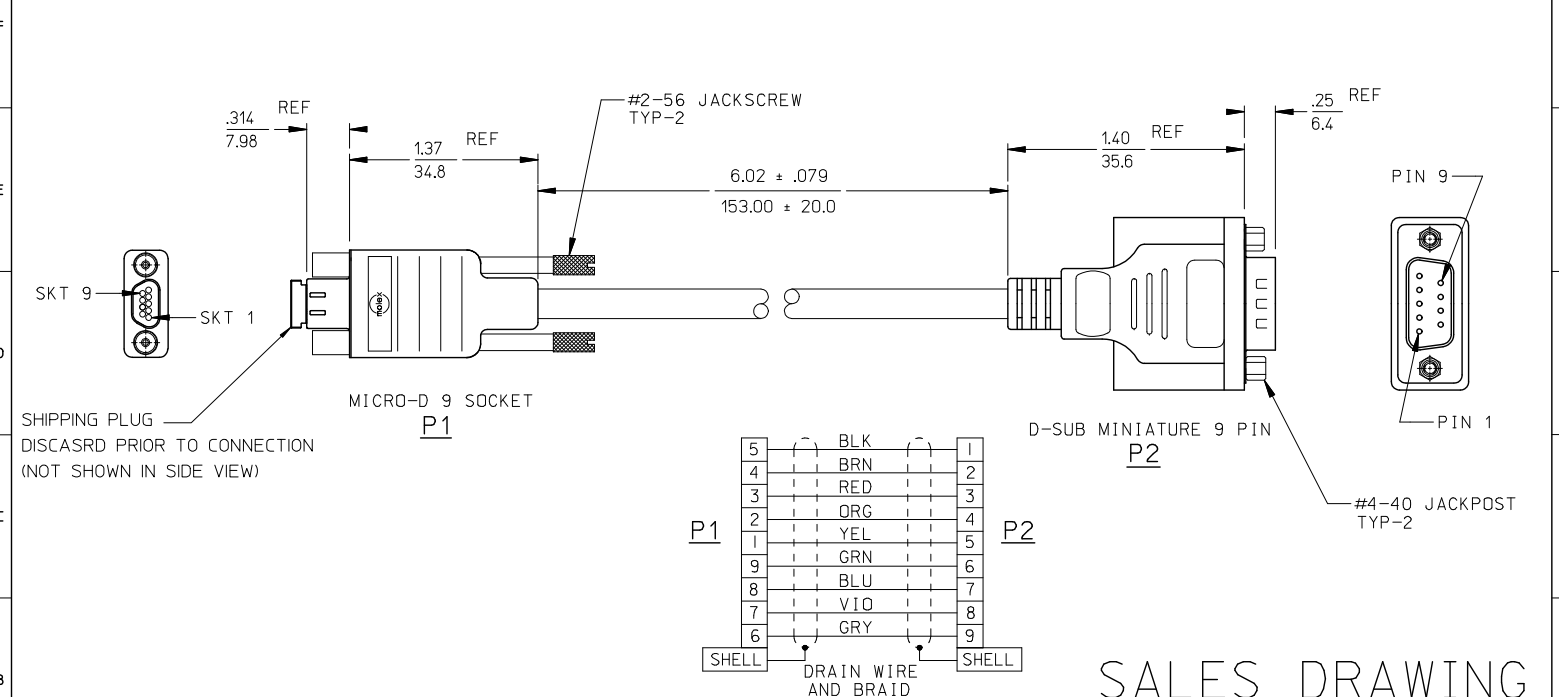
Click to view price, real time Inventory, Delivery & Lifecycle Information:

[Molex Connector Corporation](#)  
[0834219052](#)

For any questions, you can email us directly:

[sales@integrated-circuit.com](mailto:sales@integrated-circuit.com)

10	9	8	7	6	5	4	3	2	83421
MATERIAL NO. 834219052		ENGINEERING NO. 83421-9052							



5	BLK	1
4	BRN	2
3	RED	3
2	ORG	4
1	YEL	5
9	GRN	6
8	BLU	7
7	VIO	8
6	GRY	9
SHELL		SHELL

DRAIN WIRE AND BRAID

# SALES DRAWING

NOTES:  
 1) REFER TO PS-83421-001 FOR PRODUCT SPEC.  
 2) RoHS COMPLIANT

UPDATED LOGO EC NO: IPG2015-1021 DRAWING: GUSTAFSON 20/11/2017 CHECKED: ROBERT 20/10/1722 APPROVED: ADMAN 20/10/1707	QUALITY SYMBOLS ▽=0 ▽=0	GENERAL TOLERANCES (UNLESS SPECIFIED) <table border="1"> <tr> <th></th> <th>mm</th> <th>INCH</th> </tr> <tr> <td>4 PLACES</td> <td>± .13</td> <td>± .005</td> </tr> <tr> <td>3 PLACES</td> <td>± .13</td> <td>± .01</td> </tr> <tr> <td>2 PLACES</td> <td>± 0.13</td> <td>± .01</td> </tr> <tr> <td>1 PLACE</td> <td>± 0.3</td> <td>± .01</td> </tr> </table>		mm	INCH	4 PLACES	± .13	± .005	3 PLACES	± .13	± .01	2 PLACES	± 0.13	± .01	1 PLACE	± 0.3	± .01	DIMENSION STYLE IN/MM	SCALE INCH	DESIGN UNITS INCH	THIRD ANGLE PROJECTION
		mm	INCH																		
	4 PLACES	± .13	± .005																		
	3 PLACES	± .13	± .01																		
2 PLACES	± 0.13	± .01																			
1 PLACE	± 0.3	± .01																			
			DRAWN BY EMF	DATE 02/07/23	TITLE CABLE ASSY, 9 SKT COMM-D/ 9 PIN D-SUB OVERMOLDED SPECIAL																
			CHECKED BY HEB	DATE 02/07/24	MOLEX INCORPORATED																
			APPROVED BY RWD	DATE 02/27/25	DOCUMENT NO. SD-83421-010	SHEET NO. 1 OF 1															
		DRAFT WHERE APPLICABLE MUST REMAIN WITHIN DIMENSIONS	MATERIAL NO. SEE CHART	THIS DRAWING CONTAINS INFORMATION THAT IS PROPRIETARY TO MOLEX INCORPORATED AND SHOULD NOT BE USED WITHOUT WRITTEN PERMISSION																	