



Distributor of Molex Connector Corporation: Excellent Integrated System Limited
Datasheet of 0836119206 - D-Sub Connector Plug, Male Pins 9 Position Panel Mount, Through Hole Solder

Contact us: sales@integrated-circuit.com Website: www.integrated-circuit.com

Excellent Integrated System Limited

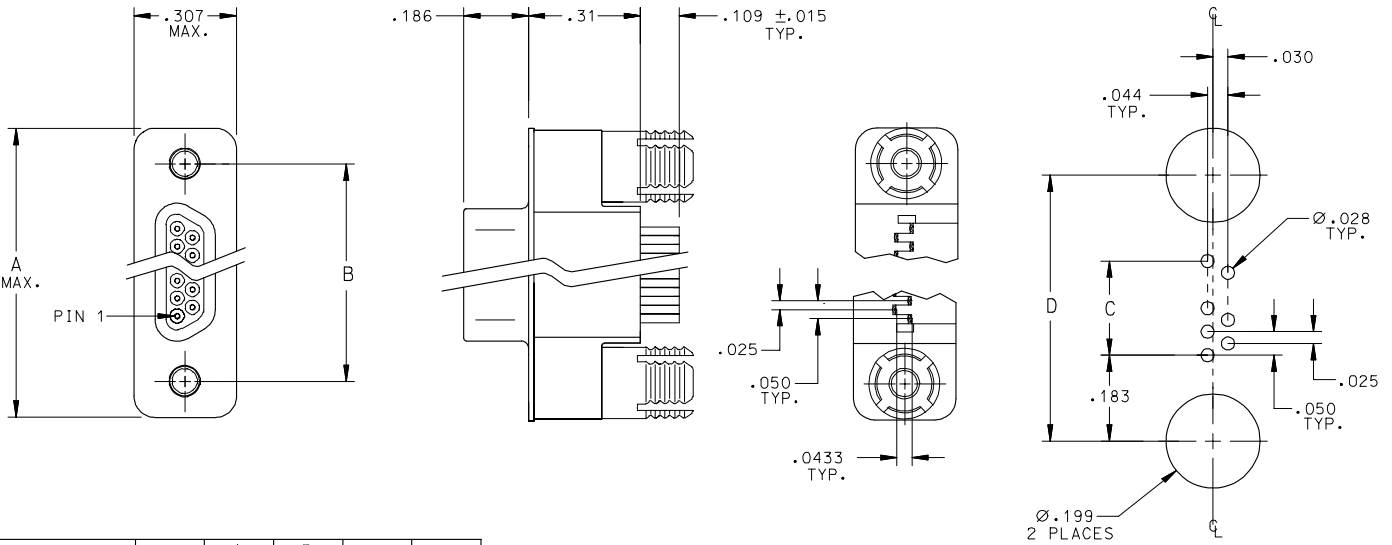
Stocking Distributor

Click to view price, real time Inventory, Delivery & Lifecycle Information:

[Molex Connector Corporation](#)
[0836119206](#)

For any questions, you can email us directly:
sales@integrated-circuit.com

Contact us: sales@integrated-circuit.com Website: www.integrated-circuit.com



PART NUMBER	SIZE	A MAX.	B NOM.	C REF.	D NOM.
836119206	9	.783	.565	.200	.565
836129205	15	.935	.715	.350	.715
836149202	25	1.185	.965	.600	.965

SALES DRAWING

RECOMMENDED
 P.C.B. LAY-OUT
 .060 PANEL THICKNESS

RELEASED FOR PROD EC NO: ETC2006-0391 DRWN: JLOMASTRO 2006/04/17 CHKD: RDEROSS 2006/04/17 APPR: RDEROSS 2006/04/17 REV DESCRIPTION A	QUALITY SYMBOLS	GENERAL TOLERANCES (UNLESS SPECIFIED)	DIMENSION STYLE IN/MM	SCALE	DESIGN UNITS INCH	THIRD ANGLE PROJECTION																																											
	$\nabla=0$ $\nabla=0$	<table border="1"> <tr> <th></th> <th>mm</th> <th>INCH</th> </tr> <tr> <td>7 PLACES</td> <td>±---</td> <td>±---</td> </tr> <tr> <td>3 PLACES</td> <td>±---</td> <td>±.010</td> </tr> <tr> <td>2 PLACES</td> <td>±0.25</td> <td>±.01</td> </tr> <tr> <td>1 PLACE</td> <td>±0.25</td> <td>±---</td> </tr> </table>		mm	INCH	7 PLACES	±---	±---	3 PLACES	±---	±.010	2 PLACES	±0.25	±.01	1 PLACE	±0.25	±---	<table border="1"> <tr> <th>mm</th> <th>INCH</th> </tr> <tr> <td>±---</td> <td>±---</td> </tr> <tr> <td>±0.25</td> <td>±.01</td> </tr> <tr> <td>±0.25</td> <td>±---</td> </tr> </table>	mm	INCH	±---	±---	±0.25	±.01	±0.25	±---	<table border="1"> <tr> <th>DRAWN BY</th> <th>DATE</th> </tr> <tr> <td>JLOMASTRO</td> <td>06/04/17</td> </tr> <tr> <th>CHECKED BY</th> <th>DATE</th> </tr> <tr> <td>RDEROSS</td> <td>06/04/17</td> </tr> <tr> <th>APPROVED BY</th> <th>DATE</th> </tr> <tr> <td>RDEROSS</td> <td>06/04/17</td> </tr> </table>	DRAWN BY	DATE	JLOMASTRO	06/04/17	CHECKED BY	DATE	RDEROSS	06/04/17	APPROVED BY	DATE	RDEROSS	06/04/17	<table border="1"> <tr> <th>TITLE</th> </tr> <tr> <td>CONNECTOR SUB-ASSEMBLY VERTICAL PLUG WITHOUT JACKPOSTS</td> </tr> </table>	TITLE	CONNECTOR SUB-ASSEMBLY VERTICAL PLUG WITHOUT JACKPOSTS	<table border="1"> <tr> <th>MATERIAL NO.</th> <th>DOCUMENT NO.</th> <th>SHEET NO.</th> </tr> <tr> <td>SEE CHART</td> <td>SD-83612-007</td> <td>1 OF 1</td> </tr> </table>	MATERIAL NO.	DOCUMENT NO.	SHEET NO.	SEE CHART	SD-83612-007	1 OF 1
		mm	INCH																																														
	7 PLACES	±---	±---																																														
3 PLACES	±---	±.010																																															
2 PLACES	±0.25	±.01																																															
1 PLACE	±0.25	±---																																															
mm	INCH																																																
±---	±---																																																
±0.25	±.01																																																
±0.25	±---																																																
DRAWN BY	DATE																																																
JLOMASTRO	06/04/17																																																
CHECKED BY	DATE																																																
RDEROSS	06/04/17																																																
APPROVED BY	DATE																																																
RDEROSS	06/04/17																																																
TITLE																																																	
CONNECTOR SUB-ASSEMBLY VERTICAL PLUG WITHOUT JACKPOSTS																																																	
MATERIAL NO.	DOCUMENT NO.	SHEET NO.																																															
SEE CHART	SD-83612-007	1 OF 1																																															
DRAFT WHERE APPLICABLE MUST REMAIN WITHIN DIMENSIONS		THIS DRAWING CONTAINS INFORMATION THAT IS PROPRIETARY TO MOLEX INCORPORATED AND SHOULD NOT BE USED WITHOUT WRITTEN PERMISSION		MOLEX INCORPORATED																																													

- 3. PART IS RoHS COMPLIANT
 - 2. MARKING: NONE.
 - 1. REFER TO PS-83421-9000 FOR PRODUCT SPECIFICATION.
- NOTES: UNLESS OTHERWISE SPECIFIED.