



**Distributor of Molex Connector Corporation: Excellent Integrated System Limited**  
Datasheet of 0836149014 - D-Sub Connector Plug, Male Pins 25 Position Panel Mount,  
Through Hole, Right Angle Solder

Contact us: [sales@integrated-circuit.com](mailto:sales@integrated-circuit.com) Website: [www.integrated-circuit.com](http://www.integrated-circuit.com)

---

## **Excellent Integrated System Limited**

Stocking Distributor

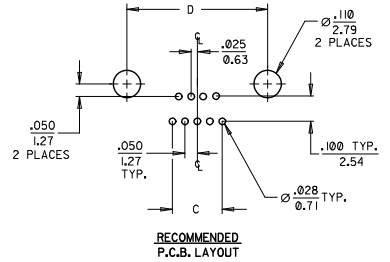
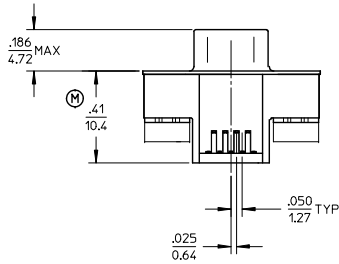
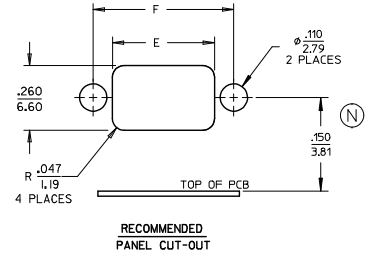
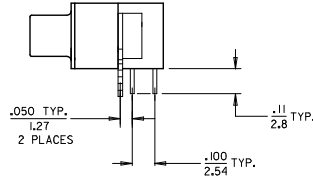
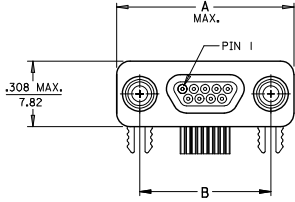
Click to view price, real time Inventory, Delivery & Lifecycle Information:

[Molex Connector Corporation](#)  
[0836149014](#)

For any questions, you can email us directly:  
[sales@integrated-circuit.com](mailto:sales@integrated-circuit.com)

Contact us: [sales@integrated-circuit.com](mailto:sales@integrated-circuit.com) Website: [www.integrated-circuit.com](http://www.integrated-circuit.com)

MATERIAL NO.	ENG. NO.	SIZE	A MAX.	B	C	D	E	F
836119016	83611-9016	9	.783/19.93	.565/14.35	.200/5.08	.565/14.35	.410/10.41	.565/14.35
836129022	83612-9022	15	.933/23.75	.715/18.16	.350/8.88	.715/18.16	.560/14.22	.715/18.16
836149014	83614-9014	25	1.185/30.10	.965/24.51	.600/15.23	.965/24.51	.810/20.57	.965/24.51



SALES DRAWING

SIZE 9 SHOWN

ADD DIM. EC NO: ICG2014-1165 DRAWN BY: DRWINBARDEN CHKD: 2013/12/30 APPR:	QUALITY SYMBOLS ▽=0 ▽=0	GENERAL TOLERANCES (UNLESS SPECIFIED) mm INCH 4 PLACES ± --- ± --- 3 PLACES ± --- ± .010 2 PLACES ± 0.25 ± .01 1 PLACE ± 0.25 ± --- ANGULAR ± 1/2°	DIMENSION STYLE IN/MM	SCALE INCH	DESIGN UNITS INCH	THIRD ANGLE PROJECTION	
	DRAWN BY: JLOMASTR DATE: 06/04/17	CHECKED BY: RDEROSS DATE: 06/04/17	APPROVED BY: RDEROSS DATE: 06/04/17	MATERIAL NO. SEE CHART	DOCUMENT NO. SD-83611-002	TITLE CONNECTOR SUB-ASSEMBLY RIGHT ANGLE PLUG WITHOUT JACKPOSTS SIZE 9-15-25	SHEET NO. 1 OF 1
	MOLEX INCORPORATED						
	DRAFT WHERE APPLICABLE MUST REMAIN WITHIN DIMENSIONS THIS DRAWING CONTAINS INFORMATION THAT IS PROPRIETARY TO MOLEX INCORPORATED AND SHOULD NOT BE USED WITHOUT WRITTEN PERMISSION						

3. PART IS RoHS COMPLIANT  
 2. MARKING: NONE.  
 1. REFER TO PS-83421-9000 FOR PRODUCT SPECIFICATION.  
 NOTES: UNLESS OTHERWISE SPECIFIED.