



**Distributor of Molex Connector Corporation: Excellent Integrated System Limited**  
Datasheet of 0836199200 - D-Sub Connector Plug, Male Pins 9, 9 Position Panel Mount,  
Through Hole, Right Angle Solder

Contact us: [sales@integrated-circuit.com](mailto:sales@integrated-circuit.com) Website: [www.integrated-circuit.com](http://www.integrated-circuit.com)

---

## **Excellent Integrated System Limited**

Stocking Distributor

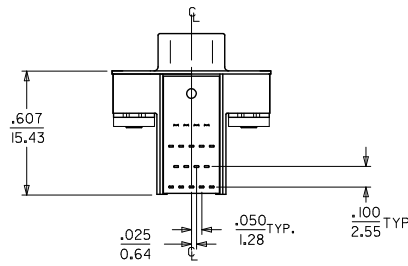
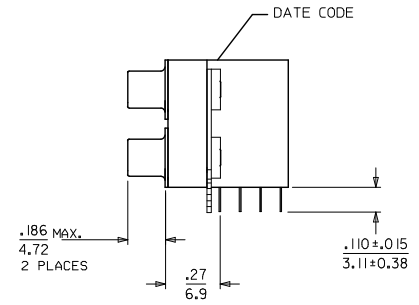
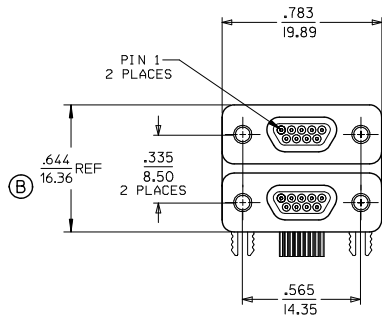
Click to view price, real time Inventory, Delivery & Lifecycle Information:

[Molex Connector Corporation](#)  
[0836199200](#)

For any questions, you can email us directly:  
[sales@integrated-circuit.com](mailto:sales@integrated-circuit.com)

10 9 8 7 6 5 4 3 2 83619

MATERIAL NO.	ENGINEERING NO.
836199200	83619-9200



SALES DRAWING

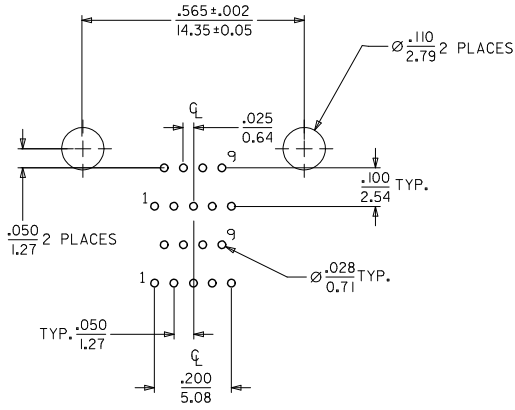
NOTES: UNLESS OTHERWISE SPECIFIED:

1. MARKING: DATE CODE
2. REFER TO PS-83421-9000 FOR PRODUCT SPECIFICATION
3. SEE SHEET 2 OF 2 FOR PCB AND PANEL CUT-OUT DIMENSIONS

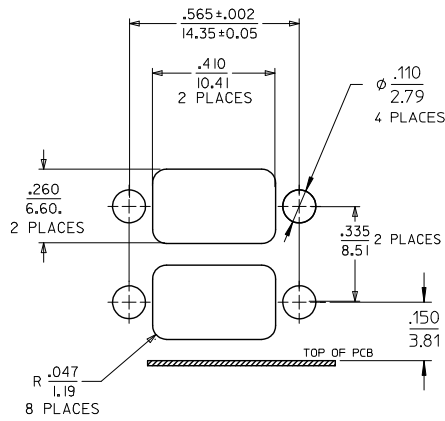
REVISE DIM EC NO: WNA2010-0136 2009/08/26 DRAWN BY: CHKDUBOUEPT 2009/08/26 APPR: JFMURPHY 2009/09/22	QUALITY SYMBOLS	GENERAL TOLERANCES (UNLESS SPECIFIED) <table border="1"> <tr> <th></th> <th>mm</th> <th>INCH</th> </tr> <tr> <td>4 PLACES</td> <td>± .13</td> <td>± .005</td> </tr> <tr> <td>3 PLACES</td> <td>± .13</td> <td>± .005</td> </tr> <tr> <td>2 PLACES</td> <td>± 0.13</td> <td>± .01</td> </tr> <tr> <td>1 PLACE</td> <td>± 0.25</td> <td>± .01</td> </tr> </table> ANGULAR ±1/2°		mm	INCH	4 PLACES	± .13	± .005	3 PLACES	± .13	± .005	2 PLACES	± 0.13	± .01	1 PLACE	± 0.25	± .01	DIMENSION STYLE IN/MM	SCALE NONE	DESIGN UNITS INCH	THIRD ANGLE PROJECTION
			mm	INCH																	
	4 PLACES		± .13	± .005																	
	3 PLACES		± .13	± .005																	
2 PLACES	± 0.13	± .01																			
1 PLACE	± 0.25	± .01																			
DRAWN BY: JLOMASTR 04/09/20 CHECKED BY: RDEROSS 04/09/27 APPROVED BY: JFMURPHY 2009/08/26	TITLE COMMERCIAL MICRO-D DUAL STACK JACKPOST NOT INSTALLED SIZE 9/18	MATERIAL NO. SEE CHART	DOCUMENT NO. SD-83619-009	SHEET NO. 1 OF 2																	
DRAFT WHERE APPLICABLE MUST REMAIN WITHIN DIMENSIONS	THIS DRAWING CONTAINS INFORMATION THAT IS PROPRIETARY TO MOLEX INCORPORATED AND SHOULD NOT BE USED WITHOUT WRITTEN PERMISSION																				

9 8 7 6 5 4 3 2 1

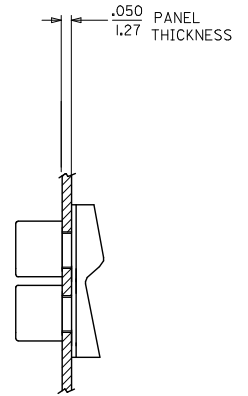
10 9 8 7 6 5 4 3 2 83619



RECOMMENDED  
P.C.B. LAY-OUT  
SOLDER SIDE



RECOMMENDED  
PANEL CUT-OUT



UPDATE DOC EC NO: WNA2010-0136 DRAWN BY: JF MURPHY 2009/08/26 CHECKED BY: CHYKORUPERT 2009/08/26 APPR: JF MURPHY 2009/09/22	QUALITY SYMBOLS ▽=0 ▽=0	GENERAL TOLERANCES (UNLESS SPECIFIED)		DIMENSION STYLE		SCALE	DESIGN UNITS	THIRD ANGLE PROJECTION
			mm	INCH	IN/MM		1:1	INCH
		4 PLACES	± .005	± .005	DRAWN BY: JLOMASTR	DATE: 04/09/20	TITLE: COMMERCIAL MICRO-D DUAL STACK JACKPOST NOT INSTALLED SIZE 9/18	
		3 PLACES	± .01	± .01	CHECKED BY: RDEROSS	DATE: 04/09/27	MOLEX INCORPORATED	
		2 PLACES	± 0.13	± .01	APPROVED BY: JFMURPHY	DATE: 2009/08/26	DOCUMENT NO. SD-83619-009	
		1 PLACE	± 0.25	± .01	MATERIAL NO. 836199200		SHEET NO. 2 OF 2	
		ANGULAR ± 1/2°		DRAFT WHERE APPLICABLE MUST REMAIN WITHIN DIMENSIONS		THIS DRAWING CONTAINS INFORMATION THAT IS PROPRIETARY TO MOLEX INCORPORATED AND SHOULD NOT BE USED WITHOUT WRITTEN PERMISSION		

9 8 7 6 5 4 3 2 1