

Excellent Integrated System Limited

Stocking Distributor

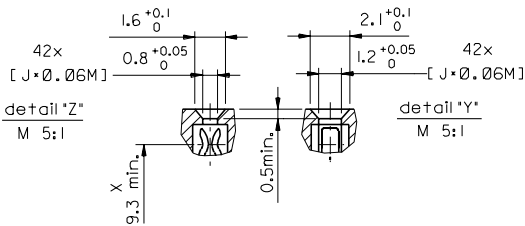
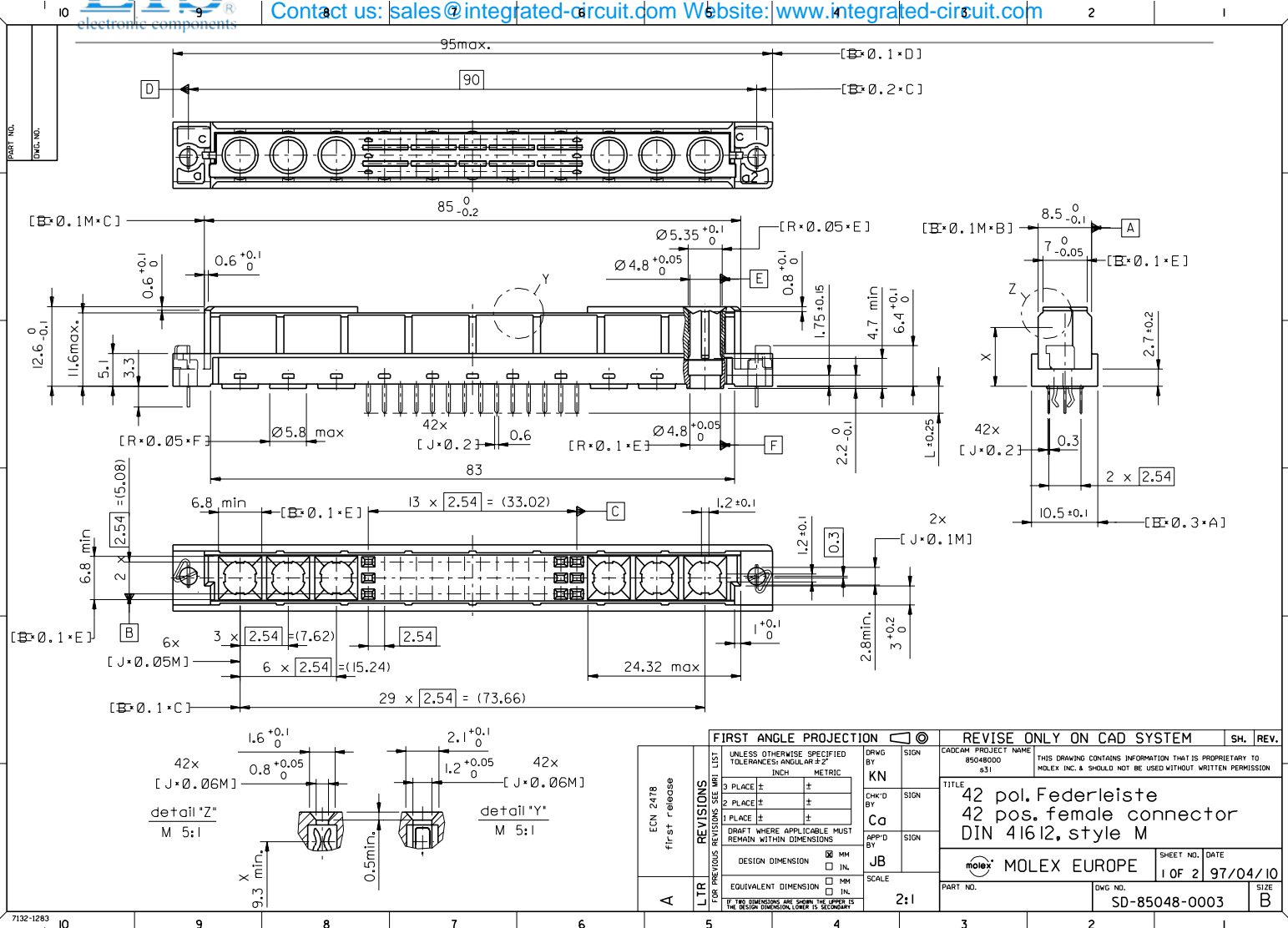
Click to view price, real time Inventory, Delivery & Lifecycle Information:

[Molex Connector Corporation](#)

[0850480074](#)

For any questions, you can email us directly:

sales@integrated-circuit.com



ECN 2478	first release
A	LTR

FIRST ANGLE PROJECTION		REVISIONS	
UNLESS OTHERWISE SPECIFIED TOLERANCES: ANGULAR ±2°	INCH	3 PLACE ±	±
	METRIC	2 PLACE ±	±
		1 PLACE ±	±
DRAFT WHERE APPLICABLE MUST REMAIN WITHIN DIMENSIONS			
DESIGN DIMENSION	<input checked="" type="checkbox"/> MM		
	<input type="checkbox"/> IN.		
EQUIVALENT DIMENSION	<input type="checkbox"/> MM		
	<input type="checkbox"/> IN.		
IF TWO DIMENSIONS ARE GIVEN, THE UPPER IS THE DESIGN DIMENSION, LOWER IS SECONDARY			

REVISE ONLY ON CAD SYSTEM		SH.	REV.
CAD/CAM PROJECT NAME	85048000		
THIS DRAWING CONTAINS INFORMATION THAT IS PROPRIETARY TO MOLEX INC. & SHOULD NOT BE USED WITHOUT WRITTEN PERMISSION			
TITLE			
42 pos. Federleiste			
42 pos. female connector			
DIN 41612, style M			
MOLEX MOLEX EUROPE		SHEET NO.	DATE
		1 OF 2	97/04/10
PART NO.	DWG NO.		SIZE
	SD-85048-0003		B

