

## Excellent Integrated System Limited

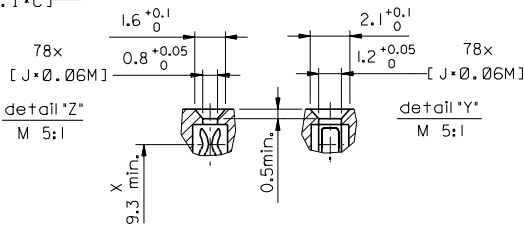
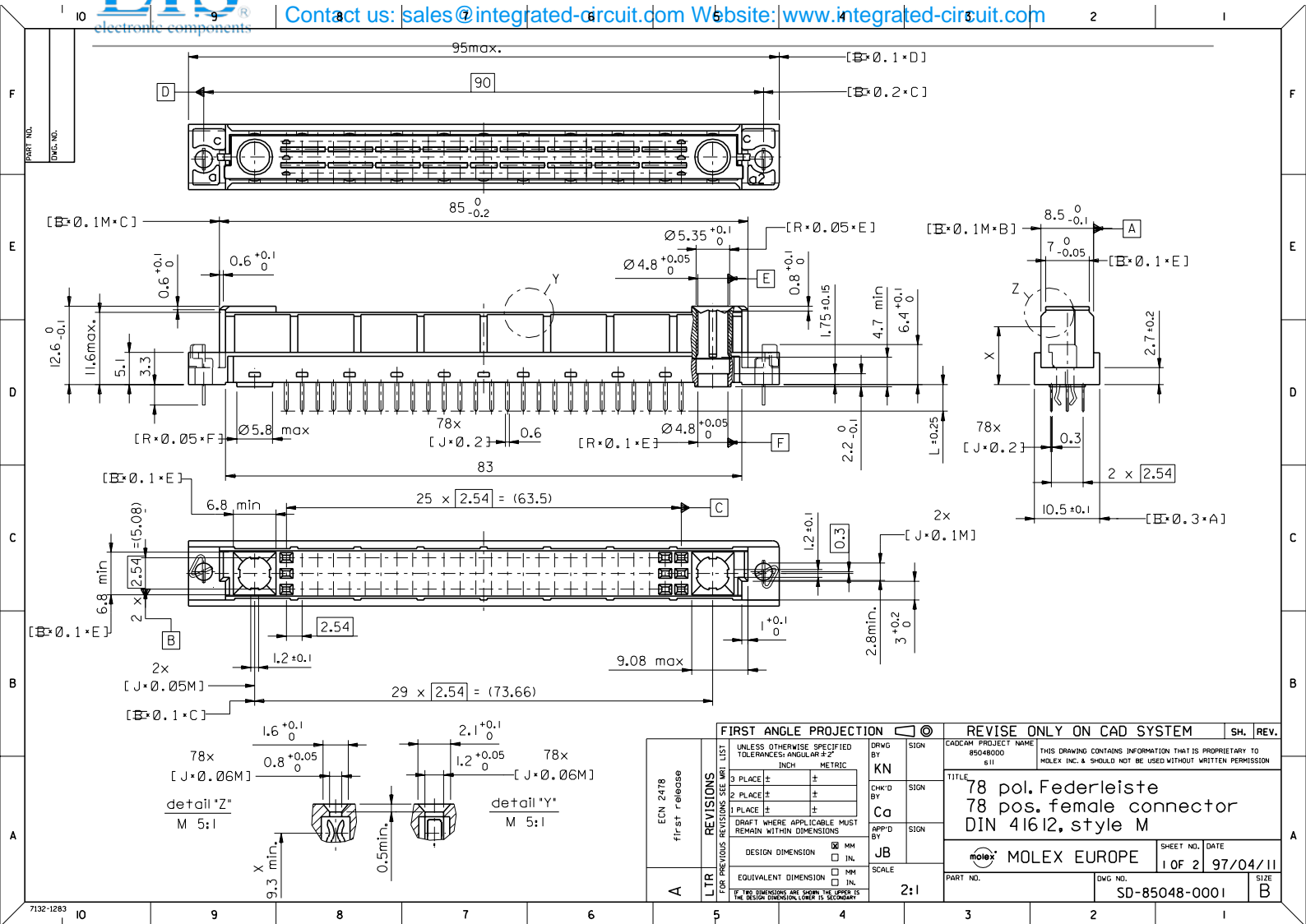
Stocking Distributor

Click to view price, real time Inventory, Delivery & Lifecycle Information:

[Molex Connector Corporation](#)  
[0850480141](#)

For any questions, you can email us directly:

[sales@integrated-circuit.com](mailto:sales@integrated-circuit.com)



ECN 2478	first release
A	LTR

FIRST ANGLE PROJECTION		UNLESS OTHERWISE SPECIFIED TOLERANCES: ANGULAR ±2°	
3 PLACE ±	±	INCH	METRIC
2 PLACE ±	±		
1 PLACE ±	±		
DRAFT WHERE APPLICABLE MUST REMAIN WITHIN DIMENSIONS			
DESIGN DIMENSION	<input checked="" type="checkbox"/> MM		
	<input type="checkbox"/> IN.		
EQUIVALENT DIMENSION	<input type="checkbox"/> MM		
	<input type="checkbox"/> IN.		
IF TWO DIMENSIONS ARE GIVEN, THE UPPER IS THE DESIGN DIMENSION, LOWER IS SECONDARY			

REVISE ONLY ON CAD SYSTEM		SH.	REV.
CAD/CAM PROJECT NAME	85048000		
THIS DRAWING CONTAINS INFORMATION THAT IS PROPRIETARY TO MOLEX INC. & SHOULD NOT BE USED WITHOUT WRITTEN PERMISSION			
TITLE		78 pos. Federleiste 78 pos. female connector DIN 41612, style M	
DRWG BY	KN	CHK'D BY	Ca
APP'D BY	JB	SCALE	2:1
MOLEX MOLEX EUROPE		SHEET NO.	1 OF 2
PART NO.		DATE	97/04/11
SD-85048-0001		SIZE	B

