

## Excellent Integrated System Limited

Stocking Distributor

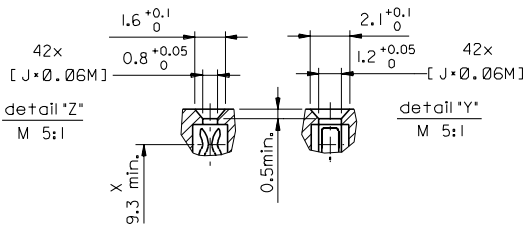
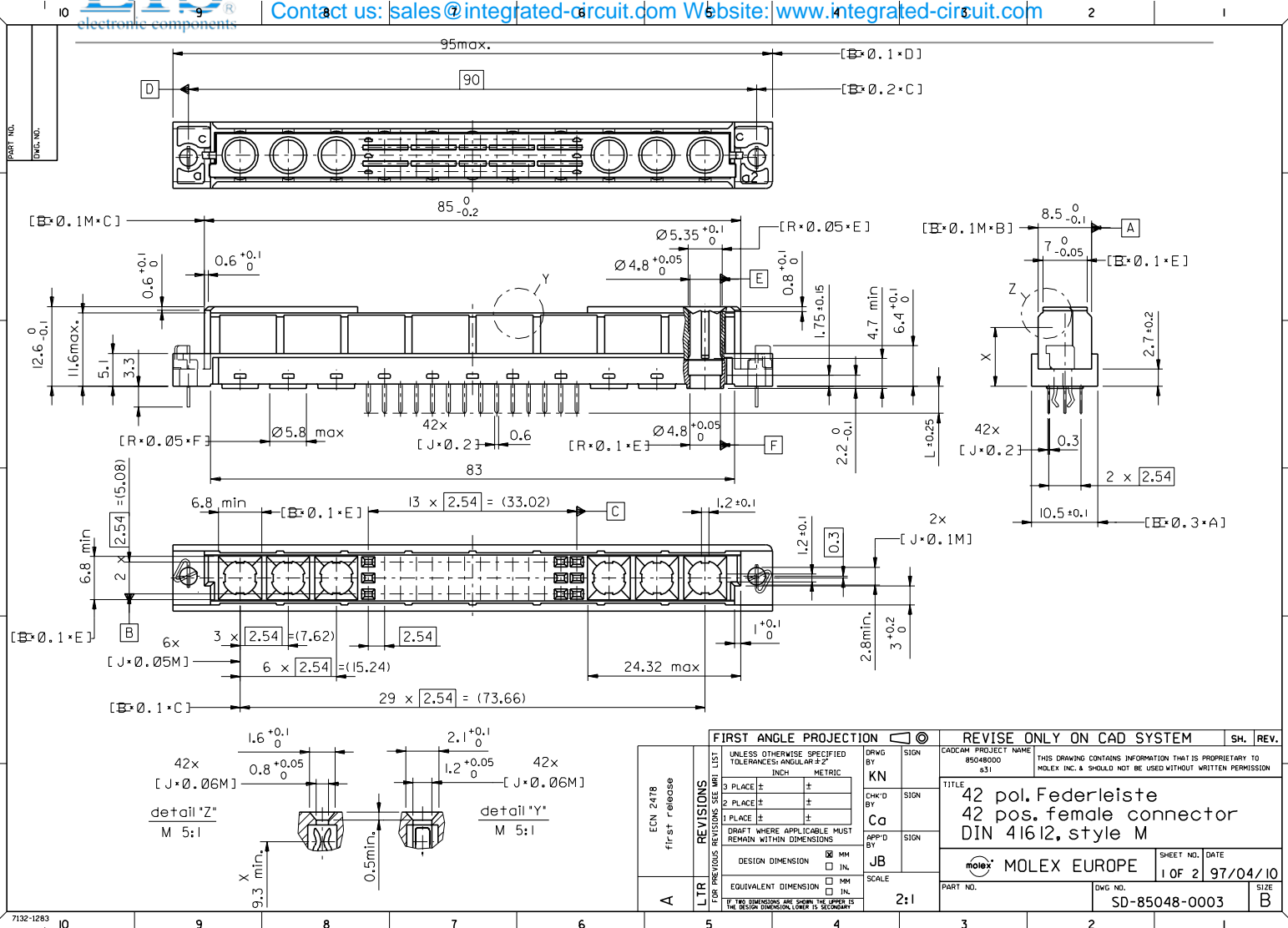
Click to view price, real time Inventory, Delivery & Lifecycle Information:

[Molex Connector Corporation](#)  
[0850481811](#)

For any questions, you can email us directly:

[sales@integrated-circuit.com](mailto:sales@integrated-circuit.com)

PART NO.  
DWG. NO.



FIRST ANGLE PROJECTION

REVISE ONLY ON CAD SYSTEM

SH. REV.

UNLESS OTHERWISE SPECIFIED TOLERANCES: ANGULAR ±2°	
INCH	METRIC
3 PLACE ±	±
2 PLACE ±	±
1 PLACE ±	±

DRAFT WHERE APPLICABLE MUST REMAIN WITHIN DIMENSIONS

DESIGN DIMENSION  MM  INL

EQUIVALENT DIMENSION  MM  INL

IF TWO DIMENSIONS ARE GIVEN, THE UPPER IS THE DESIGN DIMENSION, LOWER IS SECONDARY

DRWG BY	KN	SIGN
CHK'D BY	Ca	SIGN
APP'D BY	JB	SIGN
SCALE	2:1	

CAD/CAM PROJECT NAME	85048000	THIS DRAWING CONTAINS INFORMATION THAT IS PROPRIETARY TO MOLEX INC. & SHOULD NOT BE USED WITHOUT WRITTEN PERMISSION
TITLE	42 pos. Federleiste 42 pos. female connector DIN 41612, style M	
MOLEX MOLEX EUROPE		SHEET NO. / DATE 1 OF 2 / 97/04/10
PART NO.	DWG NO.	SIZE
	SD-85048-0003	B

