

## Excellent Integrated System Limited

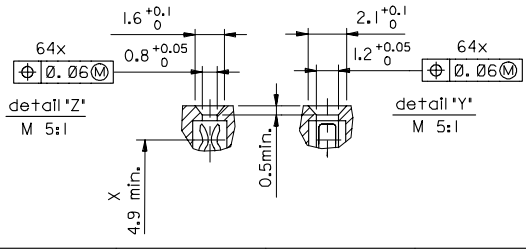
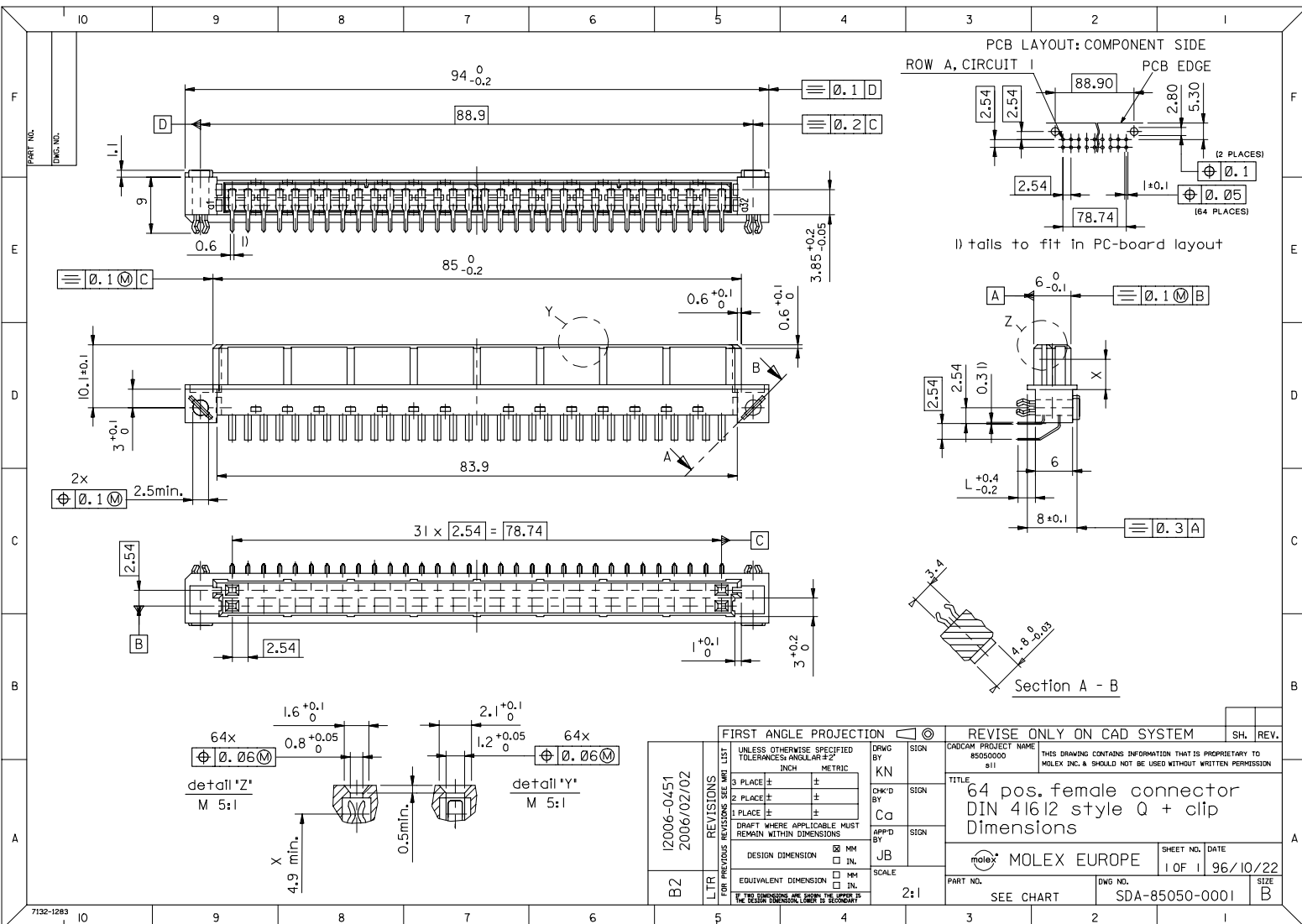
Stocking Distributor

Click to view price, real time Inventory, Delivery & Lifecycle Information:

[Molex Connector Corporation](#)  
[0850500103](#)

For any questions, you can email us directly:

[sales@integrated-circuit.com](mailto:sales@integrated-circuit.com)



|                                                                                       |  |                           |                         |                                                                                                                     |      |
|---------------------------------------------------------------------------------------|--|---------------------------|-------------------------|---------------------------------------------------------------------------------------------------------------------|------|
| FIRST ANGLE PROJECTION                                                                |  | REVISE ONLY ON CAD SYSTEM |                         | SH. REV.                                                                                                            |      |
| UNLESS OTHERWISE SPECIFIED TOLERANCES ARE AS FOLLOWS                                  |  | DRWG BY                   | SIGN                    | CAD/CAM PROJECT NAME                                                                                                |      |
| 3 PLACE ±                                                                             |  | KN                        |                         | 85050000                                                                                                            |      |
| 2 PLACE ±                                                                             |  | CHK'D BY                  | SIGN                    | sll                                                                                                                 |      |
| 1 PLACE ±                                                                             |  | Ca                        |                         | THIS DRAWING CONTAINS INFORMATION THAT IS PROPRIETARY TO MOLEX INC. & SHOULD NOT BE USED WITHOUT WRITTEN PERMISSION |      |
| DRAFT WHERE APPLICABLE MUST REMAIN WITHIN DIMENSIONS                                  |  | APP'D BY                  | SIGN                    | TITLE                                                                                                               |      |
| DESIGN DIMENSION <input type="checkbox"/> MM <input type="checkbox"/> IN.             |  | JB                        |                         | 64 pos. female connector<br>DIN 41612 style Q + clip<br>Dimensions                                                  |      |
| EQUIVALENT DIMENSION <input type="checkbox"/> MM <input type="checkbox"/> IN.         |  | SCALE                     | MOLEX EUROPE            |                                                                                                                     |      |
| IF THE DIMENSIONS ARE GIVEN IN MORE THAN ONE UNIT, THE DIMENSION LAID BY IS GOVERNANT |  | 2:1                       | SHEET NO. DATE          |                                                                                                                     |      |
|                                                                                       |  |                           | 1 OF 1 96/10/22         |                                                                                                                     |      |
|                                                                                       |  |                           | PART NO.                |                                                                                                                     | SIZE |
|                                                                                       |  |                           | SEE CHART               |                                                                                                                     | B    |
|                                                                                       |  |                           | DNG. NO. SDA-85050-0001 |                                                                                                                     |      |

