

Excellent Integrated System Limited

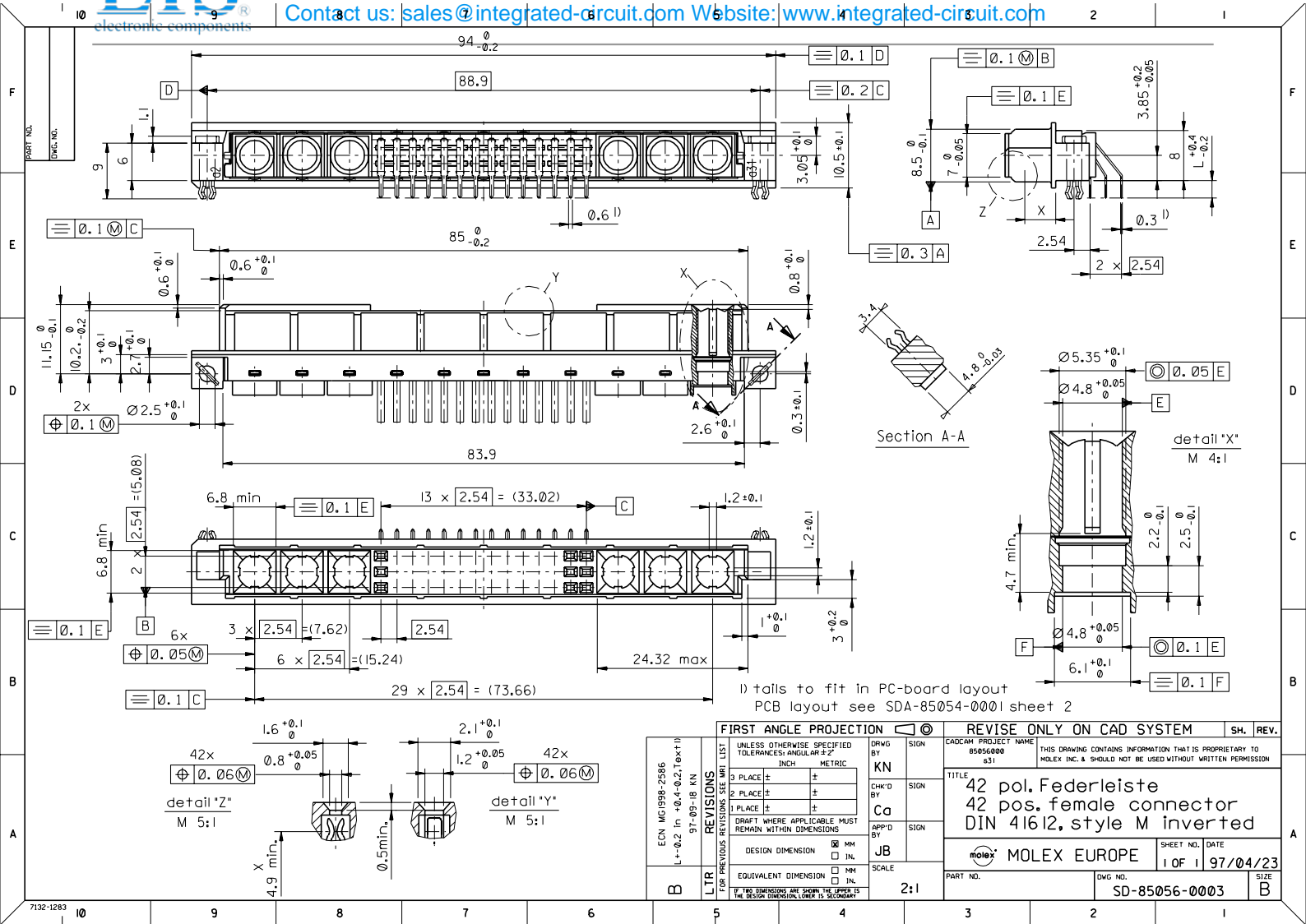
Stocking Distributor

Click to view price, real time Inventory, Delivery & Lifecycle Information:

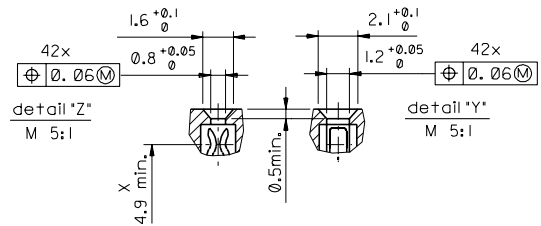
[Molex Connector Corporation](#)
[0850560024](#)

For any questions, you can email us directly:

sales@integrated-circuit.com



1) tails to fit in PC-board layout
PCB layout see SDA-85054-0001 sheet 2



FIRST ANGLE PROJECTION		REVISE ONLY ON CAD SYSTEM		SH.	REV.
UNLESS OTHERWISE SPECIFIED TOLERANCES: ANGULAR ±2°	DRWG BY KN	SIGN	CAD/CAM PROJECT NAME 85056000	THIS DRAWING CONTAINS INFORMATION THAT IS PROPRIETARY TO MOLEX INC. & SHOULD NOT BE USED WITHOUT WRITTEN PERMISSION	
3 PLACE ±	CHK'D BY Ca	SIGN	TITLE 42 pos. Federleiste 42 pos. female connector DIN 41612, style M inverted	SHEET NO. DATE 1 OF 1 97/04/23	
2 PLACE ±	APP'D BY JB	SIGN	SCALE 2:1	PART NO. SD-85056-0003	
1 PLACE ±	EQUIVALENT DIMENSION		SIZE B		
NO DIMENSIONS ARE SHOWN THE UPPER IS THE DESIGN DIMENSION, LOWER IS SECONDARY	DESIGN DIMENSION				
	EQUIVALENT DIMENSION				

ECN	MG	998-2586
L+0.2 in	+0.4	+0.2, text 11
97-05-18	KN	

