

## Excellent Integrated System Limited

Stocking Distributor

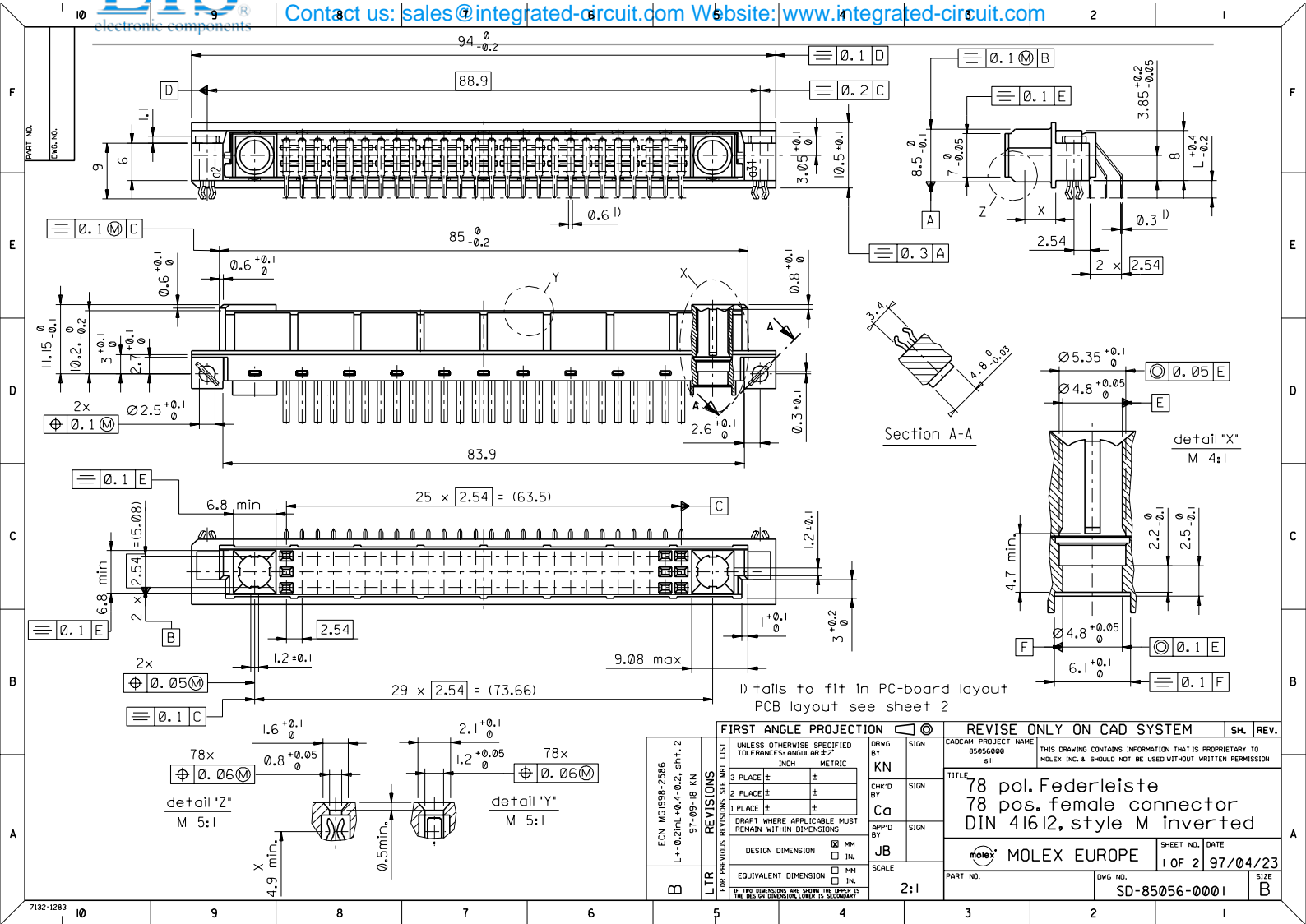
Click to view price, real time Inventory, Delivery & Lifecycle Information:

[Molex Connector Corporation](#)

[0850560103](#)

For any questions, you can email us directly:

[sales@integrated-circuit.com](mailto:sales@integrated-circuit.com)



1) tails to fit in PC-board layout  
PCB layout see sheet 2

detail "Z"  
M 5:1

detail "Y"  
M 5:1

detail "X"  
M 4:1

FIRST ANGLE PROJECTION		REVISE ONLY ON CAD SYSTEM		SH. REV.
ECN	MG998-2386	DRWG BY	KN	CAD/CAM PROJECT NAME
LTR	97-05-18 KN	CHK'D BY	Ca	B5056000
REVISIONS	UNLESS OTHERWISE SPECIFIED TOLERANCES: ANGULAR ±2°	APP'D BY	JB	811
FOR PREVIOUS REVISIONS SEE MTL LIST	3 PLACE ±	SCALE	2:1	TITLE
	2 PLACE ±			78 pos. Federleiste
	1 PLACE ±			78 pos. female connector
				DIN 41612, style M inverted
	DESIGN DIMENSION			SHEET NO. DATE
	EQUIVALENT DIMENSION			1 OF 2 97/04/23
				PART NO.
				SD-85056-0001
				DWG NO.
				SIZE
				B

VIEW ON MATING SIDE

C	C	C	C	C	C	C	C	C	C	C	C	C	C	C	C	C	C	C	C	C	C	C	C	C	C	C	C	C	C	
B	B	B	B	B	B	B	B	B	B	B	B	B	B	B	B	B	B	B	B	B	B	B	B	B	B	B	B	B	B	B
A	A	A	A	A	A	A	A	A	A	A	A	A	A	A	A	A	A	A	A	A	A	A	A	A	A	A	A	A	A	A

8 9 10 11 12 13 14 15 16 17 18 19 20 21 22 23 24 25 26 27 28 29 30 31 32 33 34 35 36 37 38 39 40 41 42 43 44 45 46 47 48 49 50 51 52 53 54 55 56 57 58 59 60 61 62 63 64 65 66 67 68 69 70 71 72 73 74 75 76 77 78

- A = 26 CONTACTS L=2,8
- B = 26 CONTACTS L=2,8
- C = 26 CONTACTS L=2,8
- S = 78 TOTAL NUMBER OF CONTACTS

Marking	Standard
Performance level	G1/0 = Contact area level / Termination fin
Flux proof	no
Fixing clip	no
Dimensions	SD-85056-0001 sht.1
Technical Data	PS-85052-0001

C	G1/0	c4-29
B	G1/0	b4-29
A	G1/0	a4-29

Contact symbol Per form. level  
Contact position number

ECN 2478 first release REVISIONS FOR PREVIOUS REVISIONS SEE MTR LIST	UNLESS OTHERWISE SPECIFIED TOLERANCES: ANGULAR ±2° INCH METRIC 3 PLACE ± . ± 2 PLACE ± . ± 1 PLACE ± . ± DRAFT WHERE APPLICABLE MUST REMAIN WITHIN DIMENSIONS DESIGN DIMENSION <input type="checkbox"/> MM <input type="checkbox"/> IN. EQUIVALENT DIMENSION <input type="checkbox"/> MM <input type="checkbox"/> IN. IF TWO DIMENSIONS ARE SHOWN, THE FIRST IS THE DESIGN DIMENSION, LOWER IS SECONDARY	DRWG BY KN CHK'D BY CC APP'D BY JB	SIGN SIGN SIGN	REVISE ONLY ON CAD SYSTEM SH. REV.
		CAD/CAM PROJECT NAME s8505601 S01 THIS DRAWING CONTAINS INFORMATION THAT IS PROPRIETARY TO MOLEX, INC. & SHOULD NOT BE USED WITHOUT WRITTEN PERMISSION		
		TITLE 78 pos. female connector acc. DIN 41612, style M invert. contacts arrangement MOLEX EUROPE SHEET NO. 1 OF 1 DATE 97/05/20 PART NO. 85056-0103 DWG NO. SD-85056-0103 SIZE A		