

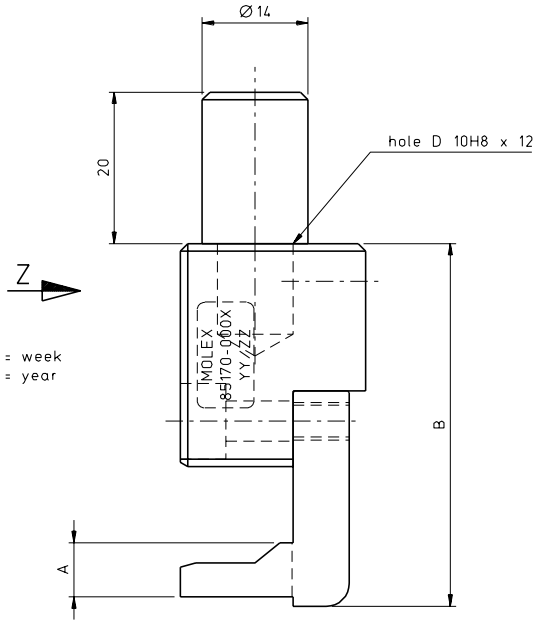
Excellent Integrated System Limited

Stocking Distributor

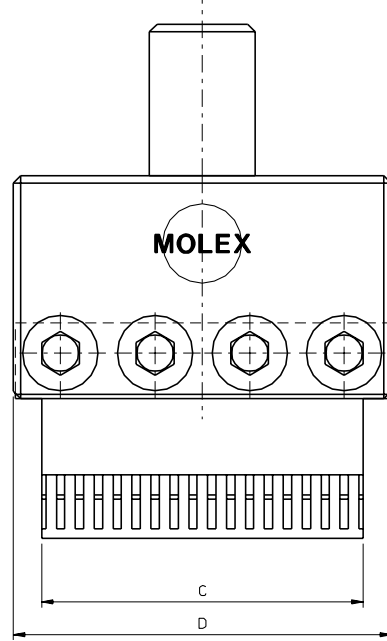
Click to view price, real time Inventory, Delivery & Lifecycle Information:

[Molex Connector Corporation](#)
[0851700004](#)

For any questions, you can email us directly:
sales@integrated-circuit.com



View Z



Mat. Nr.	Description	A	B	C	D
85170-0001	Press tool Vertical female 4SU/22	10.7	71.45	92.5	100
85170-0002	Press tool Vertical female 4SU/18.5	7.2	67.95	92.5	100
85170-0003	Press tool Vertical female 2SU/22	10.7	51.45	42.5	50
85170-0004	Press tool Vertical female 2SU/18.5	7.2	47.95	42.5	50
85170-0005	Press tool Vertical female 1SU/22	10.7	51.45	17.5	25
85170-0006	Press tool Vertical female 1SU/18.5	7.2	47.95	17.5	25

EC NO. 2502 DRWN: T. Betz 4/6/97 CHK: / / / APPR: / / / A	DESCRIPTION MAJOR CRITICAL C/E	QUALITY SYMBOLS	GENERAL TOLERANCES: (UNLESS SPECIFIED)	SCALE: 2:1 DESIGN UNITS: <input checked="" type="checkbox"/> mm <input type="checkbox"/> INCH	DIMENSIONS: <input type="checkbox"/> mm <input type="checkbox"/> INCH <input checked="" type="checkbox"/> mm ONLY	SHT REV
		DRAWN BY & DATE: T.B. 4/10/95 CHECKED BY & DATE: / / APPROVED BY & DATE: / /	THIRD ANGLE PROJECTION	TITLE: Omnigridd Press Tool Vertical Female	MOLEX MOLEX INCORPORATED	CAD FILENAME: 85170001.S01 MATERIAL NO.: see chart SD DRAWING NO.: -85170-001 SHEET NO.: 10F 1