

Excellent Integrated System Limited

Stocking Distributor

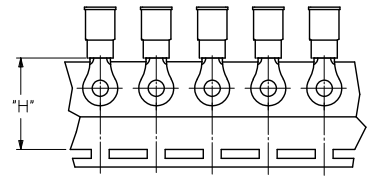
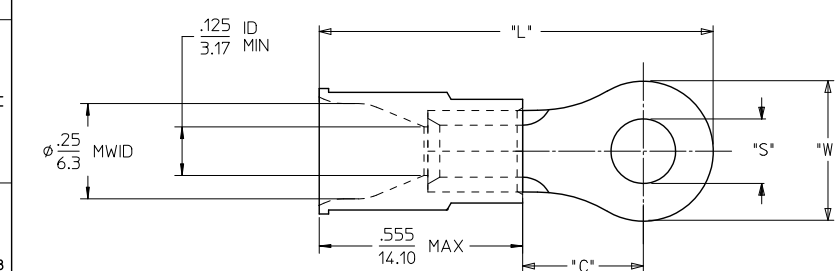
Click to view price, real time Inventory, Delivery & Lifecycle Information:

[Molex Connector Corporation](#)
[0190700123](#)

For any questions, you can email us directly:

sales@integrated-circuit.com

10		9		8		7		6		5		4		3		2		19070	
LOOSE PIECE				TAPE MOUNTED				STUD SIZE	"S"		"W"		"C"		"L"		"H"		
MATERIAL NO.	ENGINEERING P/N	MATERIAL NO.	ENGINEERING P/N	±.005/ 0.13	±.010/ 0.25	MIN			MAX		±.020/0.51								
190700143	C-236-06X	190700144	C-236-06XT	6	.146/ 3.70	.282/ 7.16		.306/ 7.77		1.04/ 26.3		.98/ 24.9							
190700145	C-236-08X	190700146	C-236-08XT	8	.173/ 4.39	.282/ 7.16		.306/ 7.77		1.04/ 26.3		.98/ 24.9							
190700117	C-228-04X	-	-	4	.119/ 3.02	.375/ 9.53		.303/ 7.70		1.08/ 27.4		-							
190700119	C-228-06X	190700120	C-228-06XT	6	.146/ 3.70	.375/ 9.53		.303/ 7.70		1.08/ 27.4		.98/ 24.9							
190700121	C-228-08X	190700122	C-228-08XT	8	.173/ 4.39	.375/ 9.53		.303/ 7.70		1.08/ 27.4		.98/ 24.9							
190700123	C-228-10X	190700125	C-228-10XT	10	.198/ 5.02	.375/ 9.53		.303/ 7.70		1.08/ 27.4		.98/ 24.9							
190700128	C-228-209X	-	-	5mm	.209/ 5.30	.375/ 9.53		.303/ 7.70		1.08/ 27.4		-							
190700130	C-230-10X	190700131	C-230-10XT	10	.198/ 5.02	.530/ 13.46		.393/ 9.98		1.25/ 31.6		.98/ 24.9							
190700132	C-230-14X	190700133	C-230-14XT	1/4"	.265/ 6.73	.530/ 13.46		.393/ 9.98		1.25/ 31.6		.98/ 24.9							
190700136	C-230-56X	190700137	C-230-56XT	5/16"	.328/ 8.33	.530/ 13.46		.393/ 9.98		1.25/ 31.6		.98/ 24.9							
190700148	C-240-10X	190700149	C-240-10XT	10	.198/ 5.02	.592/ 15.04		.466/ 11.84		1.35/ 34.3		1.17/ 29.8							
190700150	C-240-14X	190700151	C-240-14XT	1/4"	.265/ 6.73	.592/ 15.04		.466/ 11.84		1.35/ 34.3		1.17/ 29.8							
190700155	C-240-56X	190700156	C-240-56XT	5/16"	.328/ 8.33	.592/ 15.04		.466/ 11.84		1.35/ 34.3		1.17/ 29.8							
190700153	C-240-38X	190700154	C-240-38XT	3/8"	.390/ 9.90	.592/ 15.04		.466/ 11.84		1.35/ 34.3		1.17/ 29.8							
190700111	C-201-14X	-	-	1/4"	.265/ 6.73	.750/ 19.05		.611/ 15.52		1.58/ 40.0		-							
190700115	C-201-76X	190700116	C-201-76XT	7/16"	.453/ 11.50	.750/ 19.05		.611/ 15.52		1.58/ 40.0		1.30/ 33.0							
190700109	C-201-12X	190700110	C-201-12XT	1/2"	.515/ 13.08	.750/ 19.05		.611/ 15.52		1.58/ 40.0		1.30/ 33.0							



PARTS ON TAPE
(NOTE: C-240 AND C-201 PARTS ARE DOUBLE-SPACED)

NOTES:

- MATERIALS:
TERMINAL: TIN-PLATED COPPER
INSULATION: PVC INSULATION, YELLOW
- MWID = MAXIMUM WIRE INSULATION DIAMETER
- PARTS ARE ROHS COMPLIANT.

REDRAW EC NO: WNA/2011-0252 DRAWN: ETHRODAHL 2011/01/24 CHKD: JMACNEIL 2011/01/24 APPR: JMACNEIL 2011/02/21	QUALITY SYMBOLS ▽=0 ▽=0	GENERAL TOLERANCES (UNLESS SPECIFIED) <table border="1"> <thead> <tr> <th></th> <th>mm</th> <th>INCH</th> </tr> </thead> <tbody> <tr> <td>4 PLACES</td> <td>± .005</td> <td>± .0005</td> </tr> <tr> <td>3 PLACES</td> <td>± .005</td> <td>± .0005</td> </tr> <tr> <td>2 PLACES</td> <td>± 0.13</td> <td>± .010</td> </tr> <tr> <td>1 PLACE</td> <td>± 0.25</td> <td>± .020</td> </tr> </tbody> </table>		mm	INCH	4 PLACES	± .005	± .0005	3 PLACES	± .005	± .0005	2 PLACES	± 0.13	± .010	1 PLACE	± 0.25	± .020	DIMENSION STYLE IN/MM	SCALE ---	DESIGN UNITS INCH	THIRD ANGLE PROJECTION
		mm	INCH																		
	4 PLACES	± .005	± .0005																		
	3 PLACES	± .005	± .0005																		
	2 PLACES	± 0.13	± .010																		
1 PLACE	± 0.25	± .020																			
DESCRIPTION RING TONGUE TERMINAL INSULKRIMP 12-10 AWG	DRAWN BY ETHRODAHL	DATE 2011/01/24	TITLE RING TONGUE TERMINAL INSULKRIMP 12-10 AWG																		
CHECKED BY JMACNEIL	DATE 2011/01/24																				
APPROVED BY JMACNEIL	DATE 2011/02/21																				
MATERIAL NO. SEE CHART	DOCUMENT NO. SD-19070-007																				
SIZE B	THIS DRAWING CONTAINS INFORMATION THAT IS PROPRIETARY TO MOLEX INCORPORATED AND SHOULD NOT BE USED WITHOUT WRITTEN PERMISSION																				