

## Excellent Integrated System Limited

Stocking Distributor

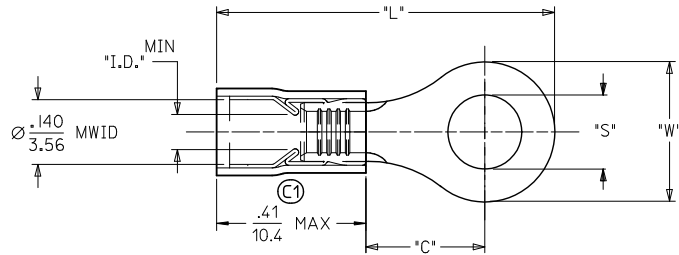
Click to view price, real time Inventory, Delivery & Lifecycle Information:

[Molex Connector Corporation](#)  
[0190730038](#)

For any questions, you can email us directly:

[sales@integrated-circuit.com](mailto:sales@integrated-circuit.com)

10	9	8	7	6	5	4	3	2	19073
MATERIAL NUMBER	ALTERNATE NUMBER	STUD SIZE	"S"	"W"	"C" MIN (C1)	"L" MAX (C1)	"I.D."	PACKAGING	
190730036	AA-832-04	04	.119(3.02)	.25(6.5)	.24(6.1)	.81 (20.6)	.062(1.57)	LOOSE PIECE	
190730038	AA-832-06	06	.146(3.71)	.25(6.5)	.24(6.1)	.81 (20.6)	.062(1.57)		
190730042	AA-832-08	08	.173(4.39)	.25(6.5)	.24(6.1)	.81 (20.6)	.062(1.57)		
190730046	AA-833-04	04	.119(3.02)	.27(6.9)	.24(6.1)	.82(20.7)	.062(1.57)		
190730047	AA-833-06	06	.146(3.71)	.27(6.9)	.24(6.1)	.82(20.7)	.062(1.57)		
190730048	AA-833-08	08	.173(4.39)	.27(6.9)	.24(6.1)	.82(20.7)	.062(1.57)		
190730049	AA-833-10	10	.198(5.03)	.27(6.9)	.24(6.1)	.82(20.7)	.062(1.57)		
190730001	AA-8111-02	02	.094(2.38)	.19(4.8)	.17(4.4)	.72(18.2)	.054(1.37)		
190730003	AA-8111-04	04	.119(3.02)	.19(4.8)	.17(4.4)	.72(18.2)	.054(1.37)		
190730037	AA-832-04T	04	.119(3.02)	.25(6.5)	.24(6.1)	.81 (20.6)	.062(1.57)		
190730040	AA-832-06T	06	.146(3.71)	.25(6.5)	.24(6.1)	.81 (20.6)	.062(1.57)		
190730043	AA-832-08T	08	.173(4.39)	.25(6.5)	.24(6.1)	.81 (20.6)	.062(1.57)		
190730050	AA-833-10T	10	.198(5.03)	.27(6.9)	.24(6.1)	.82(20.7)	.062(1.57)		
190730002	AA-8111-02T	02	.094(2.38)	.19(4.8)	.17(4.4)	.72(18.2)	.054(1.37)		
190730004	AA-8111-04T	04	.119(3.02)	.19(4.8)	.17(4.4)	.72(18.2)	.054(1.37)		



- NOTES:  
 1. MATERIAL: COPPER  
 PLATING: ELECTROPLATE TIN  
 2. FERRULE: TIN-PLATED BRASS  
 3. INSULATION: RED NYLON  
 4. MWID=MAXIMUM WIRE INSULATION DIA.  
 5. ALL DIMENSIONS IN INCHES (MM).  
 6. PARTS ARE ROHS COMPLIANT.

FIX TOLERANCES EC NO: VWV2010-0470 DRAWN BY: 2010/01/27 CHECKED: 2010/01/27 APPROV: 2010/01/27	QUALITY SYMBOLS	GENERAL TOLERANCES (UNLESS SPECIFIED)	DIMENSION STYLE	SCALE	DESIGN UNITS	THIRD ANGLE PROJECTION															
	$\nabla=0$ $\nabla=0$	<table border="1"> <thead> <tr> <th></th> <th>mm</th> <th>INCH</th> </tr> </thead> <tbody> <tr> <td>4 PLACES</td> <td>± .005</td> <td>± .0005</td> </tr> <tr> <td>3 PLACES</td> <td>± .01</td> <td>± .001</td> </tr> <tr> <td>2 PLACES</td> <td>± .013</td> <td>± .0015</td> </tr> <tr> <td>1 PLACE</td> <td>± .025</td> <td>± .0025</td> </tr> </tbody> </table>		mm	INCH	4 PLACES	± .005	± .0005	3 PLACES	± .01	± .001	2 PLACES	± .013	± .0015	1 PLACE	± .025	± .0025	IN/MM	1:1	INCH	
		mm	INCH																		
	4 PLACES	± .005	± .0005																		
3 PLACES	± .01	± .001																			
2 PLACES	± .013	± .0015																			
1 PLACE	± .025	± .0025																			
DESCRIPTION	DRAWN BY: ASAYDEH CHECKED BY: JLMASTRO APPROVED BY: RDEROSS DATE: 05/12/07	TITLE	RING TONGUE TERMINAL 22-18 AWG AVIKRIMP, 800-SERIES																		
REV		MATERIAL NO. SEE CHART	DOCUMENT NO. SD-19073-004	MOLEX INCORPORATED SHEET NO. 1 OF 1																	