



Distributor of Molex Connector Corporation: Excellent Integrated System Limited

Datasheet of 19115-0003 - CONN SNAP SPADE #8 18-22AWG

Contact us: sales@integrated-circuit.com Website: www.integrated-circuit.com

Excellent Integrated System Limited

Stocking Distributor

Click to view price, real time Inventory, Delivery & Lifecycle Information:

[Molex Connector Corporation](#)
[19115-0003](#)

For any questions, you can email us directly:

sales@integrated-circuit.com



NOTES:

- ① MAT'L: COPPER (STOCK TKN. $\frac{.031}{.79}$)
- ② PLATING: ELECTRO TIN (.0003 MIN)
- ③ TIN-PLATED BRASS FUNNEL FERRULE
- ④ NYLON INSULATION (COLOR CODED RED)

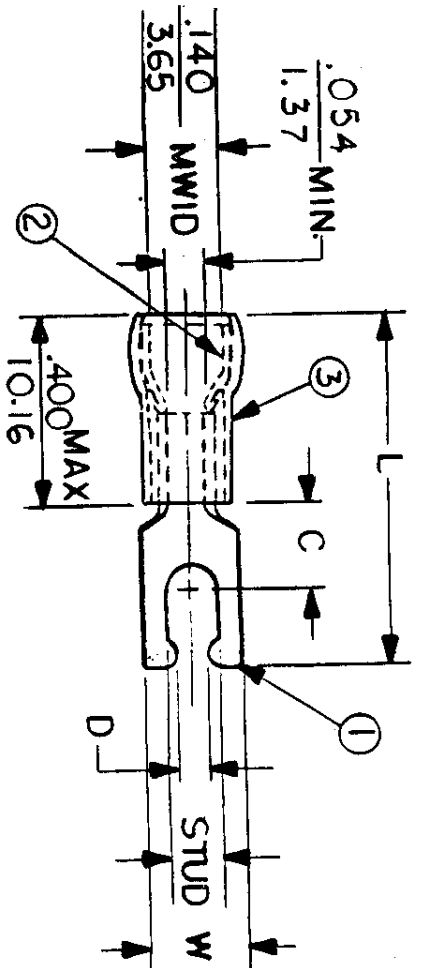
STUD SIZES: ($\pm .005$)

- 02 = .094
- 04 = .119
- 06 = .146
- 08 = .173
- 10 = .198
- 14 = .265
- 56 = .328
- 38 = .390

"UL" LISTING # E32244
 "CSA" LISTING # 18689

ALL DIMENSIONS = $\frac{\text{INCHES}}{\text{MM}}$

(MWID) = DENOTES MAXIMUM WIRE INSULATION DIAMETER



FILE NO.

AA-CD-805-01

PART NUMBER	"W" ±.010	"C" MIN.	"L" MAX.	"D" ±.005	AVAILABLE STUD SIZES	DIMENSIONAL TOLERANCES UNLESS OTHERWISE SPECIFIED		REFERENCE	SCALE:	NTS	DATE	TITLE:	DWG. NO.	CUSTOMER DWG
						FRAC.	DEC.							
AA-8190-	$\frac{.260}{6.60}$	$\frac{.235}{5.97}$	$\frac{.870}{22.10}$	$\frac{.111}{2.82}$	06						11.8.84	SNAP SPADE TONGUE TERMINAL AVIKRIMP 800-SERIES	A	
AA-8191-	$\frac{.290}{7.37}$	$\frac{.235}{5.97}$	$\frac{.880}{22.35}$	$\frac{.137}{3.48}$	08									
AA-8192-	$\frac{.328}{8.33}$	$\frac{.235}{5.97}$	$\frac{.930}{23.62}$	$\frac{.163}{4.14}$	10									



DWG. NO. A CUSTOMER DWG