

Excellent Integrated System Limited

Stocking Distributor

Click to view price, real time Inventory, Delivery & Lifecycle Information:

[Molex Connector Corporation](#)
[19115-0016](#)

For any questions, you can email us directly:

sales@integrated-circuit.com



NOTES:

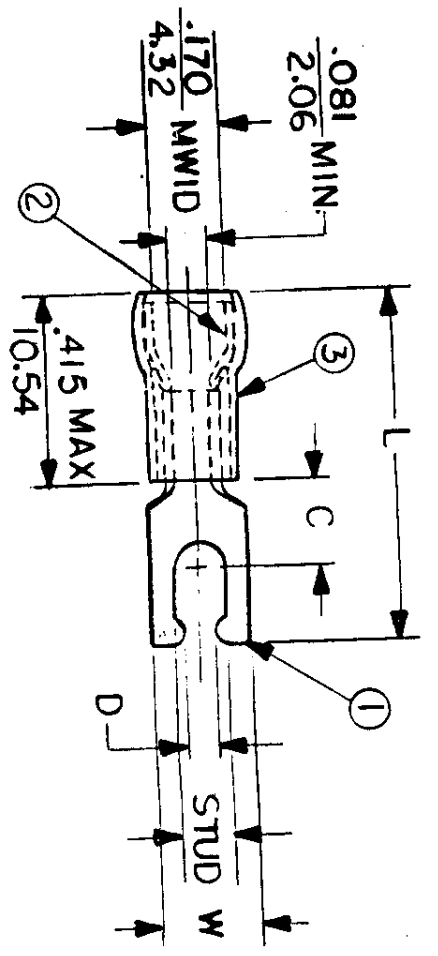
- ① MAT'L: COPPER (STOCK TKN. $\frac{.031}{.79}$)
- ② PLATING: ELECTRO TIN (.0003 MIN)
- ③ TIN-PLATED BRASS FUNNEL FERRULE
- ④ NYLON INSULATION (COLOR CODED BLUE)

STUD SIZES: ($\pm .005$)

- 02 = .094
- 04 = .119
- 06 = .146
- 08 = .173
- 10 = .198
- 14 = .265
- 56 = .328
- 38 = .390

"UL" LISTING # E32244
 "CSA" LISTING # 18689

WIRE SIZE: 16 - 14 AWG₂
 1.0 - 2.5 MM₂



ALL DIMENSIONS = $\frac{\text{INCHES}}{\text{MM}}$ (MWID) = DENOTES MAXIMUM WIRE INSULATION DIAMETER

PART NUMBER	"W" $\pm .010$	"C" MIN.	"L" MAX.	"D" $\pm .005$	AVAILABLE STUD SIZES	DIMENSIONAL TOLERANCES UNLESS OTHERWISE SPECIFIED			REFERENCE	SCALE: NTS	DATE	TITLE:	DWG. NO.	CUSTOMER DWG
						FRAC.	DEC.	ANG.						
BB-8193-	$\frac{.260}{6.60}$	$\frac{.235}{5.97}$	$\frac{.885}{22.48}$	$\frac{.111}{2.82}$	06						11.9.84	SNAP SPADE TONGUE TERMINAL	A	
BB-8194-	$\frac{.290}{7.37}$	$\frac{.235}{5.97}$	$\frac{.895}{22.73}$	$\frac{.137}{3.48}$	08						11.14.84	SNAP SPADE TONGUE TERMINAL	A	
BB-8195-	$\frac{.328}{8.33}$	$\frac{.235}{5.97}$	$\frac{.945}{24.00}$	$\frac{.163}{4.14}$	10						11.14.84	SNAP SPADE TONGUE TERMINAL	A	

