

## Excellent Integrated System Limited

Stocking Distributor

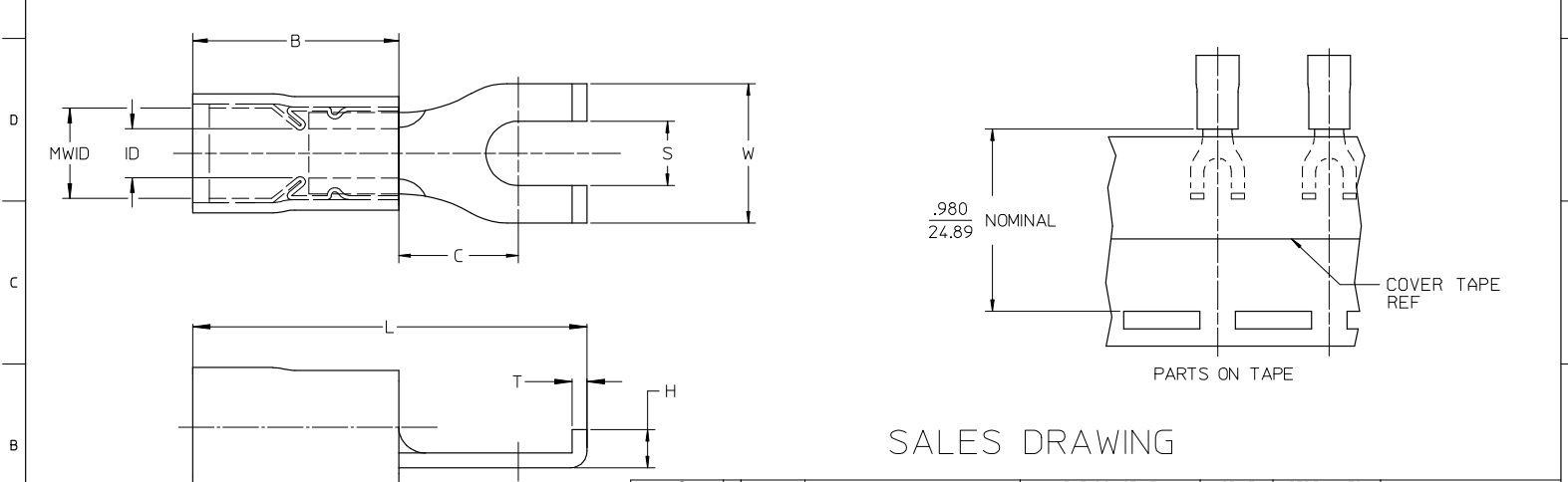
Click to view price, real time Inventory, Delivery & Lifecycle Information:

[Molex Connector Corporation](#)  
[0191270086](#)

For any questions, you can email us directly:

[sales@integrated-circuit.com](mailto:sales@integrated-circuit.com)

| LOOSE PIECE     |                    | TAPE MOUNTED    |                    | DIMENSIONS |              |              |               |           |           |            |                |         |           | FINISH           |
|-----------------|--------------------|-----------------|--------------------|------------|--------------|--------------|---------------|-----------|-----------|------------|----------------|---------|-----------|------------------|
| MATERIAL NUMBER | ENGINEERING NUMBER | MATERIAL NUMBER | ENGINEERING NUMBER | STUD SIZE  | S ±.005      | W MAX        | C MIN         | ID MIN    | MWID      | B REF      | L MAX          | H REF   | T REF     | INSULATION COLOR |
| 191270007       | AA-815-06          | 191270009       | AA-815-06T         | 6          | .146/3.71    | .301/7.6     | .207/5.3      | .054/1.37 | .138/3.51 | .400/10.16 | .781/19.84     | .08/2.0 | .031/0.79 | RED              |
| 191270010       | AA-815-08          | 191270011       | AA-815-08T         | 8          | .173/4.39    | .301/7.6     | .207/5.3      | .054/1.37 | .138/3.51 | .400/10.16 | .781/19.84     | .08/2.0 | .031/0.79 | RED              |
| 191270012       | AA-815-10          | 191270013       | AA-815-10T         | 10         | .198/5.03    | .301/7.6     | .207/5.3      | .054/1.37 | .138/3.51 | .400/10.16 | .781/19.84     | .08/2.0 | .031/0.79 | RED              |
| 191270039       | BB-816-06          | 191270041       | BB-816-06T         | 6          | .146/3.71    | .301/7.6     | .209/5.3      | .081/2.06 | .165/4.19 | .400/10.16 | .810/20.32     | .08/2.0 | .031/0.79 | BLUE             |
| 191270042       | BB-816-08          | 191270044       | BB-816-08T         | 8          | .173/4.39    | .301/7.6     | .209/5.3      | .081/2.06 | .165/4.19 | .400/10.16 | .810/20.32     | .08/2.0 | .031/0.79 | BLUE             |
| 191270099       | BB-816-10          | 191270045       | BB-816-10T         | 10         | .198/5.03    | .301/7.6     | .209/5.3      | .081/2.06 | .165/4.19 | .400/10.16 | .810/20.32     | .08/2.0 | .031/0.79 | BLUE             |
| 191270083       | C-817-06           | 191270084       | C-817-06T          | 6          | .146/3.71    | .345/8.8 (A) | .270/6.85 (A) | .128/3.25 | .225/5.71 | .560/14.22 | 1.026/26.1 (A) | .10/2.5 | .040/1.02 | YELLOW           |
| 191270086       | C-817-08           | 191270087       | C-817-08T          | 8          | .173/4.39    | .385/9.8     | .270/6.85 (A) | .128/3.25 | .225/5.71 | .560/14.22 | 1.026/26.1 (A) | .10/2.5 | .040/1.02 | YELLOW           |
| 191270089       | C-817-10           | 191270090       | C-817-10T          | 10         | .209/5.3 (A) | .385/9.8     | .270/6.85 (A) | .128/3.25 | .225/5.71 | .560/14.22 | 1.026/26.1 (A) | .10/2.5 | .040/1.02 | YELLOW           |



SALES DRAWING

- NOTES:
1. MATERIAL: COPPER
  2. PLATING: ELECTRO-TIN
  3. MWID = MAXIMUM WIRE INSULATION DIAMETER
  4. PART IS RoHS COMPLIANT

| 12-10 TO ALT DIE DIMS<br>EC NO: ETC2008-0012<br>CD: DRINKSTONE 2007/11/26<br>CHKD: MACNEIL 2007/11/26<br>APPR: MACNEIL 2007/12/05<br>REV: | QUALITY SYMBOLS | GENERAL TOLERANCES (UNLESS SPECIFIED)<br><table border="1"> <tr> <th></th> <th>mm</th> <th>INCH</th> </tr> <tr> <td>4 PLACES</td> <td>± .005</td> <td>± .0005</td> </tr> <tr> <td>3 PLACES</td> <td>± .005</td> <td>± .0005</td> </tr> <tr> <td>2 PLACES</td> <td>± 0.13</td> <td>± .01</td> </tr> <tr> <td>1 PLACE</td> <td>± 0.25</td> <td>± .01</td> </tr> </table> ANGULAR ±1/2° |              | mm  | INCH   | 4 PLACES | ± .005           | ± .0005 | 3 PLACES | ± .005 | ± .0005 | 2 PLACES | ± 0.13 | ± .01 | 1 PLACE | ± 0.25 | ± .01 | DIMENSION STYLE | SCALE | DESIGN UNITS | THIRD ANGLE PROJECTION |
|---|-----------------|--|--------------|---|--|----------|------------------|---------|----------|--------|---------|----------|--------|-------|---------|--------|-------|-----------------|-------|--------------|------------------------|
|   |                 |  | mm           | INCH  |  |          |                  |         |          |        |         |          |        |       |         |        |       |                 |       |              |                        |
|   | 4 PLACES        |  | ± .005       | ± .0005   |  |          |                  |         |          |        |         |          |        |       |         |        |       |                 |       |              |                        |
|   | 3 PLACES        |  | ± .005       | ± .0005   |  |          |                  |         |          |        |         |          |        |       |         |        |       |                 |       |              |                        |
| 2 PLACES  | ± 0.13          | ± .01  |              |   |  |          |                  |         |          |        |         |          |        |       |         |        |       |                 |       |              |                        |
| 1 PLACE   | ± 0.25          | ± .01  |              |   |  |          |                  |         |          |        |         |          |        |       |         |        |       |                 |       |              |                        |
|   |                 |  | IN/MM        | 4:1   | INCH   |          |                  |         |          |        |         |          |        |       |         |        |       |                 |       |              |                        |
|   |                 |  | DRAWN BY     | DATE  | TITLE  |          |                  |         |          |        |         |          |        |       |         |        |       |                 |       |              |                        |
|   |                 |  | DLM          | 2003/08/25  | FLANGED SPADE TERMINAL, AVIKRIMP -800 SERIES |          |                  |         |          |        |         |          |        |       |         |        |       |                 |       |              |                        |
|   |                 |  | CHECKED BY   | DATE  |  |          |                  |         |          |        |         |          |        |       |         |        |       |                 |       |              |                        |
|   |                 |  | HEB          | 2003/08/25  |  |          |                  |         |          |        |         |          |        |       |         |        |       |                 |       |              |                        |
|   |                 |  | APPROVED BY  | DATE  |  |          |                  |         |          |        |         |          |        |       |         |        |       |                 |       |              |                        |
|   |                 |  | RWD          | 2003/08/25  |  |          |                  |         |          |        |         |          |        |       |         |        |       |                 |       |              |                        |
|   |                 |  | MATERIAL NO. | DOCUMENT NO.  |  |          |                  |         |          |        |         |          |        |       |         |        |       |                 |       |              |                        |
|   |                 |  | SEE CHART    | SD-19127-003  |  |          |                  |         |          |        |         |          |        |       |         |        |       |                 |       |              |                        |
|   |                 |  | SIZE B       | THIS DRAWING CONTAINS INFORMATION THAT IS PROPRIETARY TO MOLEX INCORPORATED AND SHOULD NOT BE USED WITHOUT WRITTEN PERMISSION |  |          | SHEET NO. 1 OF 1 |         |          |        |         |          |        |       |         |        |       |                 |       |              |                        |