

## **Excellent Integrated System Limited**

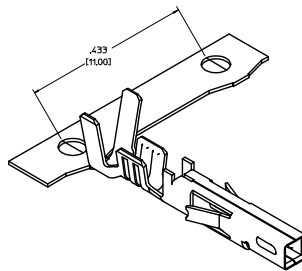
Stocking Distributor

Click to view price, real time Inventory, Delivery & Lifecycle Information:

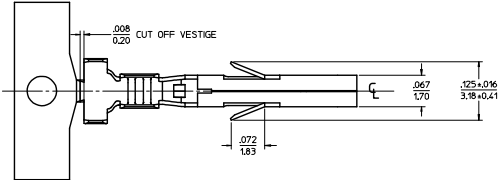
[Molex Connector Corporation](#)  
[0460183541](#)

For any questions, you can email us directly:  
[sales@integrated-circuit.com](mailto:sales@integrated-circuit.com)

ITEM NO.	FORM	WIRE GAGE	DIM. 'B'	DIM. 'C'	DIM. 'D'	DIM. 'E'	DIM. 'F'	DIM. 'G'
460182541	CHAIN	22-24	.09±.012 (2.30±0.30)	.09±.016 (2.30±0.40)	.024 (0.60)	.071±.012 (1.80±0.30)	.065±.016 (1.65±0.40)	.016 (0.40)
460181541	CHAIN	18-20	.142±.012 (3.60±0.30)	.177±.016 (4.50±0.40)	.035 (0.90)	.075±.012 (1.90±0.30)	.09±.016 (2.30±0.40)	.020 (0.50)
460183541	CHAIN	16	.142±.012 (3.60±0.30)	.177±.016 (4.50±0.40)	.035 (0.90)	.09±.012 (2.30±0.30)	.06±.016 (2.70±0.40)	.024 (0.60)

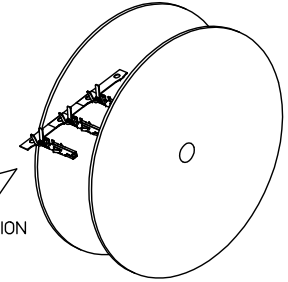
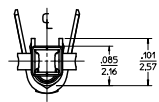
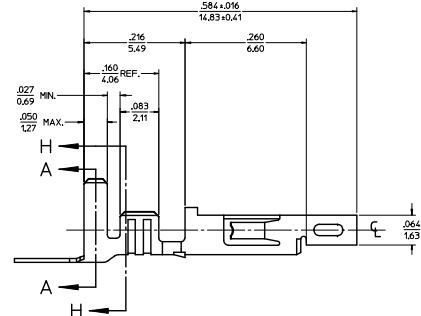


- NOTES:**
- MATERIAL: COPPER ALLOY .080/0.203 THICK
  - FINISH:
    - .000030/.00076 MIN. SELECT GOLD IN CONTACT AREA AND .000100/.00254 MIN. SELECT MATTE TIN IN CRIMP AREA OVER .000050/.00127 MIN. NICKEL OVERALL.
    - PROPRIETARY MOLEX ADVANCED CONTACT SURFACE FINISH (ACSF) IN CONTACT AREA.
  - PRODUCT SPECIFICATION: PS-46018-004
  - PACKAGING INFORMATION: PK-46018-001 FOR CHAIN TERMINALS
  - MATES WITH MALE TERMINAL SERIES 46012 AND HEADERS 46011, 44068, 42404, 43810, 44014, 35609, 44015, 30070.
  - TERMINAL FOR USE WITH 5557, 42474, 44516, 43760, AND 30067 SERIES HOUSINGS.
  - WHEN TERMINALS ARE INSTALLED IN THE HOUSING THE WIRES ARE TO BE DRESSED IN SUCH A MANNER TO ALLOW THE TERMINALS TO FLOAT FREELY IN THE POCKET.
  - THIS TERMINAL IS DESIGNED FOR SINGLE WIRE CRIMPING.
  - THIS PART CONFORMS TO CLASS B REQUIREMENTS OF COSMETIC SPEC PS-45499-002.

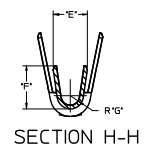
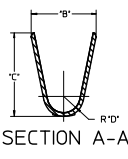


**LEGEND**

46018\*54\*  
 BASE NUMBER      FORM 1 - CHAIN  
 WIRE GAGE  
 1 = 18-20  
 2 = 22-24  
 3 = 16



**RoHS COMPLIANT**



QUALITY SYMBOLS	GENERAL TOLERANCES (UNLESS SPECIFIED)	DIMENSION STYLE		SCALE	DESIGN UNITS	THIRD ANGLE PROJECTION
		mm	INCH	10:1	INCH	
▽=0	4 PLACES ±----					
▽=0	3 PLACES ±---					
▽=0	2 PLACES ±--					
▽=0	1 PLACE ±-					
▽=0	0 PLACE ±					

CHANGE TITLE	GENERAL TOLERANCES (UNLESS SPECIFIED)	DIMENSION STYLE	SCALE	DESIGN UNITS	THIRD ANGLE PROJECTION
REV. NO. 1	4 PLACES ±----	mm / INCH	10:1	INCH	
REV. NO. 2	3 PLACES ±---				
REV. NO. 3	2 PLACES ±--				
REV. NO. 4	1 PLACE ±-				
REV. NO. 5	0 PLACE ±				

CHANGE TITLE	GENERAL TOLERANCES (UNLESS SPECIFIED)	DIMENSION STYLE	SCALE	DESIGN UNITS	THIRD ANGLE PROJECTION
REV. NO. 1	4 PLACES ±----	mm / INCH	10:1	INCH	
REV. NO. 2	3 PLACES ±---				
REV. NO. 3	2 PLACES ±--				
REV. NO. 4	1 PLACE ±-				
REV. NO. 5	0 PLACE ±				