

Excellent Integrated System Limited

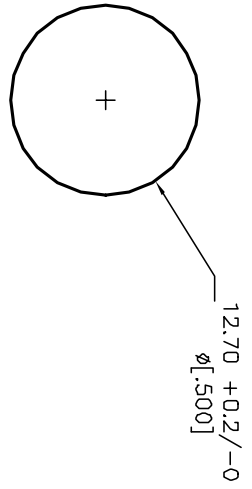
Stocking Distributor

Click to view price, real time Inventory, Delivery & Lifecycle Information:

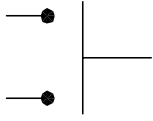
[E-Switch](#)
[RP3502MAGR N](#)

For any questions, you can email us directly:

sales@integrated-circuit.com



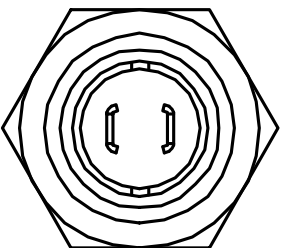
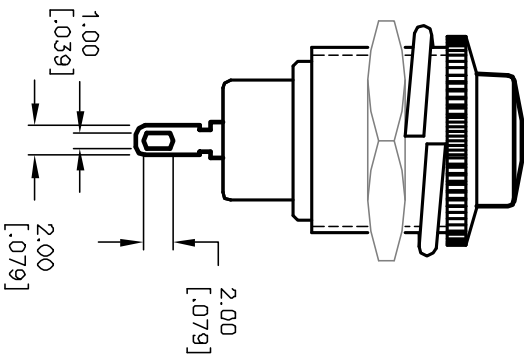
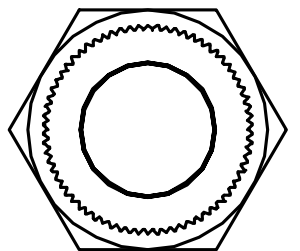
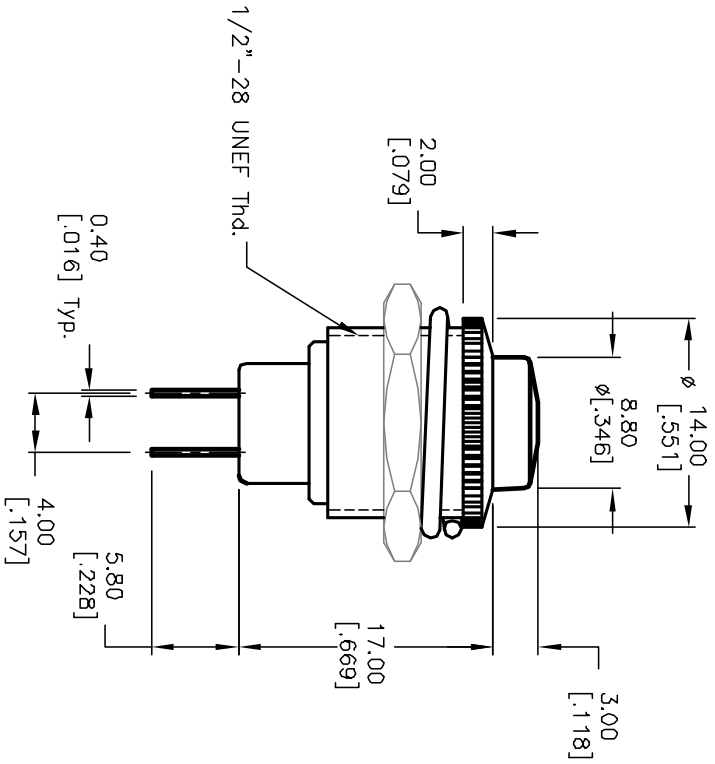
RECOMMENDED PANEL
MOUNTING



CIRCUIT: 2P: SPST
CONTACT CONFIGURATION
OFF (ON)

NOTES:

1. ALL DIMENSIONS IN MM [INCH]
2. GENERAL TOLERANCE: X.X=±0.4
X.XX=±0.25
3. TERM. NOS. FOR REF. ONLY
4. RATING: 3A 125V, 1.5A 250V AC
5. CONTACT RESISTANCE: 50m ohm max.
6. INSULATION RESISTANCE: DC 500V 100M ohm min.
7. DIELECTRIC STRENGTHS: AC 1000V 1 minute
8. ACTUATOR COLOR: GREEN



E-SWITCH®

RP3502MA-GRN

| REV. | ECN No. | DESCRIPTION | DATE | CHKD |
|------|---------|-----------------------------|---------|------|
| A | 12156 | REFER TO OLD TAB# F030015_A | 5/21/00 | CB |

THE INFORMATION CONTAINED IN THIS DOCUMENT IS PROPRIETARY TO E-SWITCH AND IS NOT TO BE COPIED OR TRANSMITTED

| TITLE | SCALE | DATE | DR | DWG | REV |
|--------------|-------|---------|----|---------|-----|
| RP3502MA-GRN | 2:1 | 2/14/00 | MM | F030016 | A |