

Excellent Integrated System Limited

Stocking Distributor

Click to view price, real time Inventory, Delivery & Lifecycle Information:

[TE Connectivity AMP Connectors](#)
[2-480251-0](#)

For any questions, you can email us directly:

sales@integrated-circuit.com

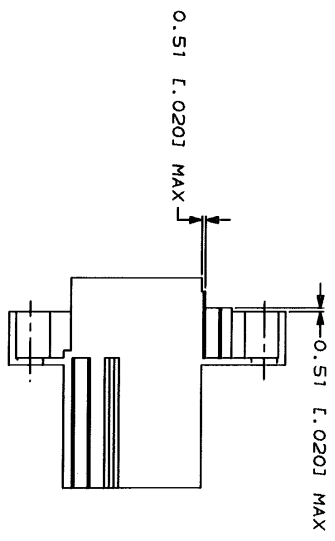
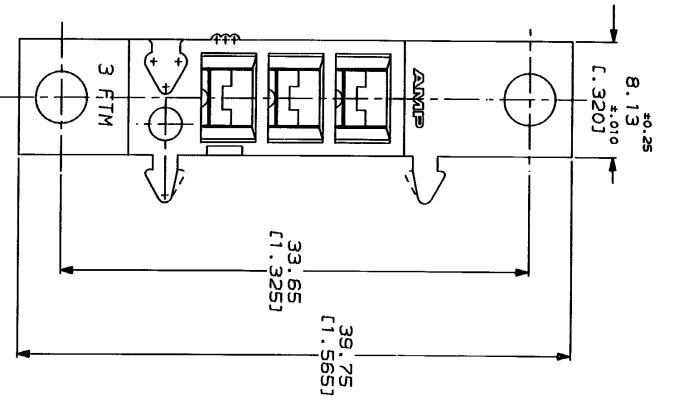
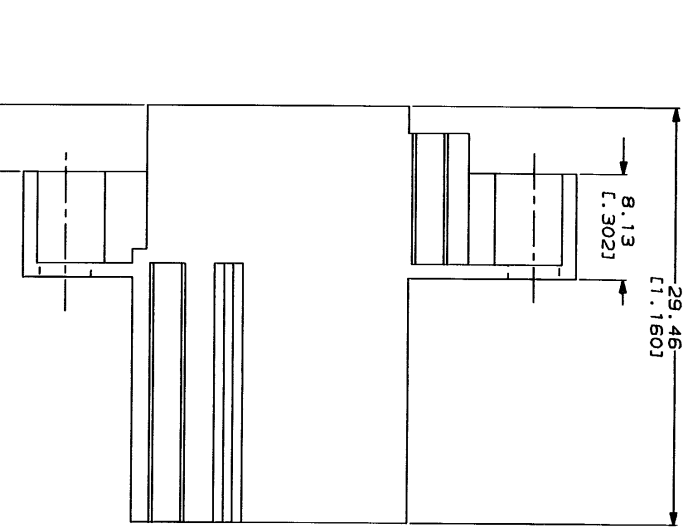
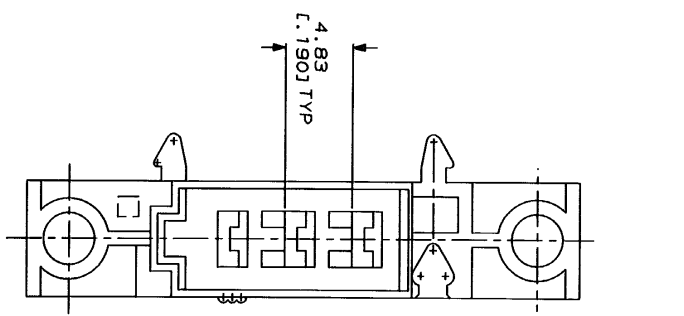


RELEASING AUTHORITY: AMP INCORPORATED, ALL INTERNATIONAL RIGHTS RESERVED.
 THIS DRAWING IS UNPUBLISHED.
 © COPYRIGHT 1994

19

LOC	DIST	ZONE	LTN	DATE	APPD
AF	50		U	2/23/94	JR/RB

REV	DESCRIPTION	DATE	APPD
1	REWORK PER 0085-94	2/23/94	JR/RB



2-480251-0 ONLY

- 1 USE TERMINAL 60434
- 2 FOR MOUNTING HOLE DIMENSIONS SEE CP-22678 AND CP-22893
- 3 FOR MOUNTING HOLE DIMENSIONS FOR 2-480251-0 SEE CP 24310

DO NOT SCALE PRINT.
 UNLESS SPECIFIED DIMENSIONS IN MM (INCHES)
 TOLERANCES ON:
 1 PL C DEC ± 0.38 (L.015)
 2 PL C DEC ± .15
 3 PL C DEC ± .15
 ANGLES ± .5°
 MATERIAL NYLON

DR 2/23/94 JR RUTH	CHK 2/23/94 NS FEHNER	NAME AMP AMP Incorporated Harrisburg, PA 17105-3608
APPD 2/23/94 R BEAVER	APPD 2/23/94 R BEAVER	FINISH SEE TABLE
PRODUCT SPEC	APPLICATION SPEC	SIZE CAGE CODE 00779 DRAWING NO 4-480251
		SCALE 4:1

HOUSING, TAB, FASTON,
 4.75 L.1871 SERIES

COLOR	PART NO
NATURAL	2-480251-0
RED	1-480251-9
BLACK	1-480251-8
GRAY	1-480251-7
VIOLET	1-480251-6
BLUE	1-480251-5
GREEN	1-480251-4
YELLOW	1-480251-3
ORANGE	1-480251-2
BROWN	1-480251-1
NATURAL	1-480251-0

THIS DRAWING IS A CONTROLLED DOCUMENT FOR AMP AND THE CONTROLLER HAS AUTHORITY FOR REVISION. SHOULD BE CONTROLLED FOR THE LATEST REVISION.

AMP 1711-8 REV 3-92
 22-FEB-94 14:13:20 00013469 /file/amp/21/21/4/189

CUSTOMER DRAWING