

Excellent Integrated System Limited

Stocking Distributor

Click to view price, real time Inventory, Delivery & Lifecycle Information:

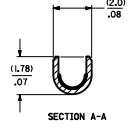
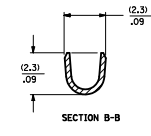
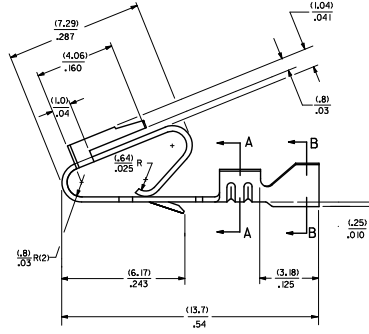
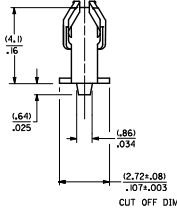
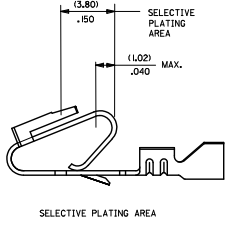
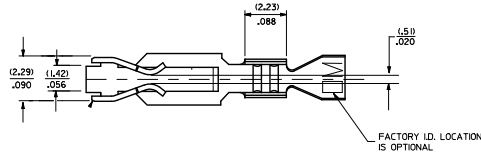
[Molex Connector Corporation](#)

[08-50-0185](#)

For any questions, you can email us directly:

sales@integrated-circuit.com

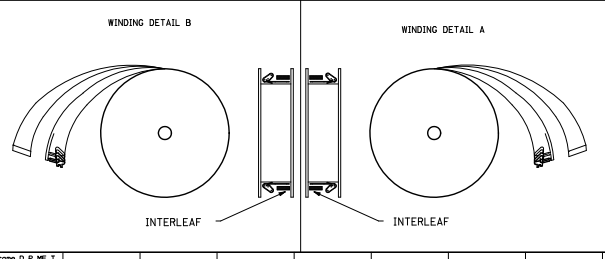
- NOTES:
 1. MATERIAL: SEE LEGEND
 2. FINISH: SEE LEGEND
 3. PRODUCT SPECIFICATION: PS-40-02
 4. DIMENSIONS GIVEN ACROSS CENTERLINES ARE SYMMETRICAL ABOUT THOSE CENTERLINES WITHIN HALF THE TOTAL TOLERANCE.
 5. CRIMP FOR 22 TO 26 GA. WIRE WITH MAX. INSULATION DIA. OF (1.65)/.005
 6. THIS PRODUCT CONFORMS TO CLASS B REQUIREMENTS OF COSMETIC SPECIFICATION PS-45499-002.



MAT'L: (L27)/.0106 THK J
 7258-1111
 FORM
 BLANK+ CHAIN PER DETAIL B
 A=CHAIN PER DETAIL A
 L= LOOSE

PLATING PER SDES- 88

(909) - HOT TIN D.P.: 0.002541/.000100 MIN.
 (558) - SELECT GOLD: 0.000761/.000030 MIN.
 OVERALL GOLD FLASH: 0.000050/.000002 MIN.
 OVERALL NICKEL UNDERPLATE: 0.001271/.000050 MIN.
 (561) - SELECT GOLD: 0.000761/.000030 MIN.
 OVERALL NICKEL UNDERPLATE: 0.001271/.000050 MIN.
 (555) - SELECT GOLD: 0.000381/.000015 MIN.
 OVERALL NICKEL UNDERPLATE: 0.000761/.000030 MIN.



QUALITY SYMBOLS	GENERAL TOLERANCES (UNLESS SPECIFIED)		DIMENSION STYLE		SCALE	DESIGN UNITS	THIRD ANGLE PROJECTION
	mm	INCH	MM/IN				
∇=0	4 PLACES	±.010	---	---	---	INCH	☉
∇=0	3 PLACES	±.010	---	---			
∇=0	2 PLACES	±0.25	±.014	---			
∇=0	1 PLACE	±0.36	---	---			
		ANGULAR	±1/2°				

REMOVE PINS	GENERAL TOLERANCES	DRAWN BY	DATE	TITLE
EC MOLLEP202-821	(UNLESS SPECIFIED)	JJS	12/03/87	TRIFURCON TERMINAL
DOWNSTREAM		CHECKED BY	DATE	CRIMP TYPE - 156 CENTERS
CHICKILPER		PATEL	12/03/87	22 TO 26 AWG
APPROVALS		APPROVED BY	DATE	
		LENZ	12/03/87	

MATERIAL NO.	DOCUMENT NO.	SHEET NO.
SEE CHART	SD-7258	1 OF 2

DRAFT WHERE APPLICABLE MUST REMAIN WITHIN DIMENSIONS

THIS DRAWING CONTAINS INFORMATION THAT IS PROPRIETARY TO MOLEX INCORPORATED AND SHOULD NOT BE USED WITHOUT WRITTEN PERMISSION

7258-(*)*			7258-A(*)*																	
PART NO.	ENG. NO.		PART NO.	ENG. NO.		PART NO.	ENG. NO.		PART NO.	ENG. NO(SUFFIX ONLY)		PART NO.	ENG. NO(SUFFIX ONLY)	VOID CKT.	PART NO.	ENG. NO(SUFFIX ONLY)	VOID CKT.			
08-50-0183	7258-IP909B		08-04-0001	7258-AIP99B																
08-50-0185	7258-IP909L		08-65-0121	7258-AIP561L	ES-276-P561															
08-50-0283	7258-IP909IA		08-65-0123	7258-AIP561L	MAKE FROM															
			08-56-0124	7258-AIP561L	7258-AIP561L															
				7258-AIP561L																
				7258-AIP561L																
			08-52-0124	7258-AIP909L																
			08-52-0125	7258-AIP909L																
			08-65-0126	7258-AIP555L	ES-276-P555															
			08-55-0127	7258-AIP555L																

COLUMN NO. 1	CONT. IN COLUMN NO.	SHEET NO.	COLUMN NO. 2	CONT. IN COLUMN NO.	SHEET NO.	COLUMN NO. 3	CONT. IN COLUMN NO.	SHEET NO.	COLUMN NO. 4	CONT. IN COLUMN NO.	SHEET NO.	COLUMN NO. 4	CONT. IN COLUMN NO.	SHEET NO.	COLUMN NO. 4	CONT. IN COLUMN NO.	SHEET NO.
--------------	---------------------	-----------	--------------	---------------------	-----------	--------------	---------------------	-----------	--------------	---------------------	-----------	--------------	---------------------	-----------	--------------	---------------------	-----------

SEE SHEET 1 EC NO. 027202-821 DRAWN/ISSUED 20/07/04 CHECKED/ISSUED 20/07/05 APPROVED/ISSUED 20/07/05 DESIGNED/ISSUED	QUALITY SYMBOLS	GENERAL TOLERANCES (UNLESS SPECIFIED)	DIMENSION STYLE	SCALE	DESIGN UNITS	THIRD ANGLE PROJECTION
	▽=0 ▽=0 ▽=0	mm INCH 4 PLACES ±--- ±--- 3 PLACES ±--- ±--- 2 PLACES ±--- ±--- 1 PLACE ±--- ±--- ANGULAR ±1/2°	MM ONLY DRAWN BY DATE 12/07/18 CHECKED BY DATE 12/07/18 APPROVED BY DATE 12/07/18	---	INCH	
	DRAFT WHERE APPLICABLE MUST REMAIN WITHIN DIMENSIONS		RATEL	MOLEX INCORPORATED		DOCUMENT NO.
			SEE CHART	SD-7258		SHEET NO. 2 OF 2