

Excellent Integrated System Limited

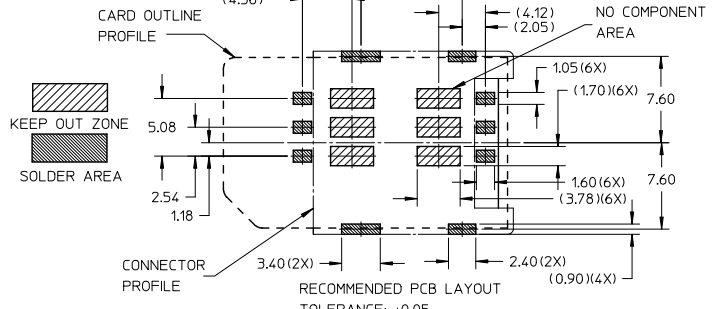
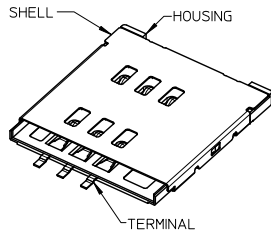
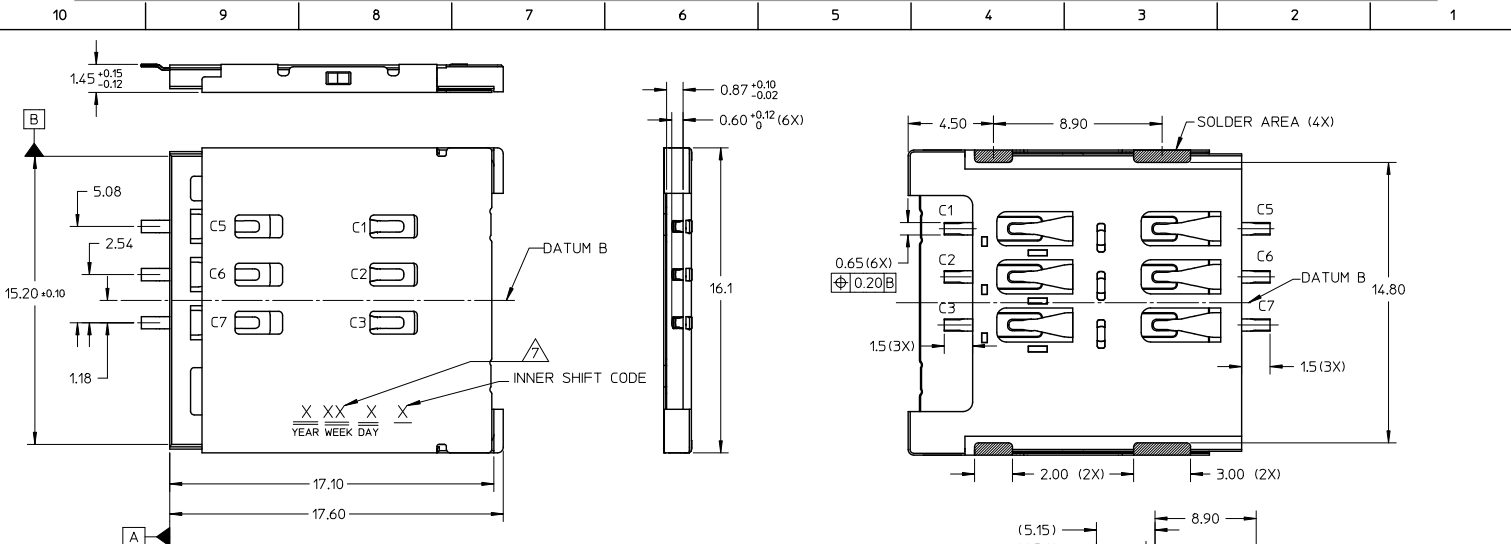
Stocking Distributor

Click to view price, real time Inventory, Delivery & Lifecycle Information:

[Molex Connector Corporation](#)
[1050481001](#)

For any questions, you can email us directly:

sales@integrated-circuit.com



NOTE:
 1 MATERIAL
 HOUSING : LIQUID CRYSTALLINE POLYMER (LCP), GLASS FILLED UL94V-0, COLOR: BLACK
 TERMINAL: PHOSPHOR BRONZE
 SHELL : STAINLESS STEEL
 2 FINISHES
 TERMINAL: 0.375um (15u") MIN GOLD ON CONTACT AREA
 0.0762 - 0.127um (3 - 5u") GOLD FLASH ON SOLDERTAILS
 1.27um (50u") MIN NICKEL UNDERPLATE OVER ALL
 SHELL : 0.0762um (3u") MIN GOLD FLASH OVER 1.27um (50u") MIN NICKEL UNDERPLATE ON SOLDER AREAS
 3 PRODUCT SPECIFICATION: PS-105048-001
 4 PACKAGING SPECIFICATION: PK-105048-001
 5 ALL SOLDERTAILS COPLANARITY: 0.08mm MAX
 6 COMPLIANT TO RoHS DIRECTIVE 2002/95/EC & ELV DIRECTIVE 2000/53/EC
 DATE CODE * * * * (4 DIGITS)
 DAY
 WEEK
 YEAR

MODIFIED SHELL EC NO: S2010-0862 DRAWN BY: JXYONG CHKD: JIAN APPR: SKTCH A4	2010/04/13 2010/05/04 2010/06/02	QUALITY SYMBOLS √=0 √=0 √=0	GENERAL TOLERANCES (UNLESS SPECIFIED)		DIMENSION STYLE		SCALE	DESIGN UNITS	THIRD ANGLE PROJECTION			
					MM ONLY		NTS	METRIC				
					DRAWN BY DATE		TITLE					
					CHECKED BY DATE							
		APPROVED BY DATE										
		MATERIAL NO.		DOCUMENT NO.								
		1050481001		SD-105048-101								
		DRAFT WHERE APPLICABLE MUST REMAIN WITHIN DIMENSIONS		THIS DRAWING CONTAINS INFORMATION THAT IS PROPRIETARY TO MOLEX INCORPORATED AND SHOULD NOT BE USED WITHOUT WRITTEN PERMISSION								