

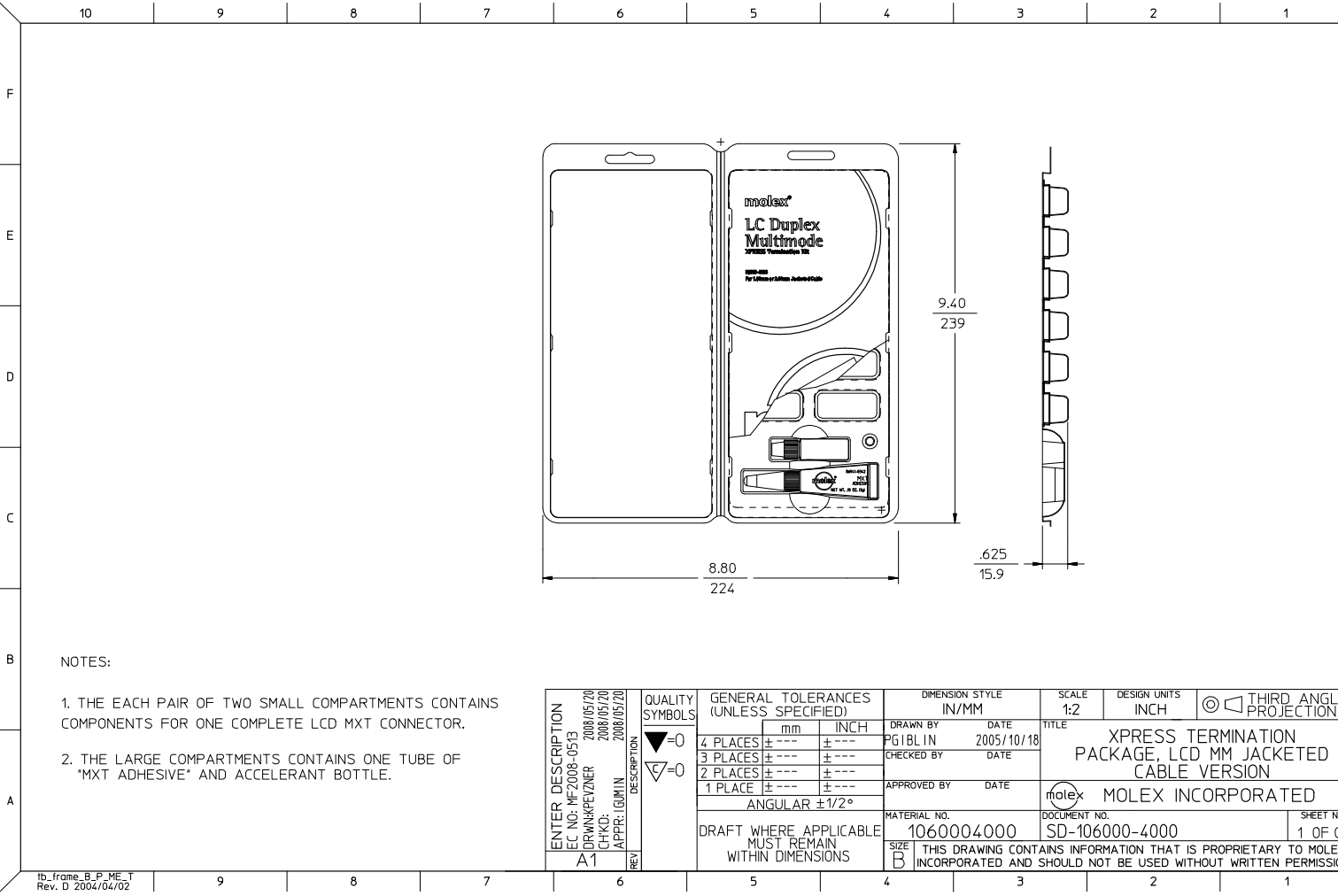
Excellent Integrated System Limited

Stocking Distributor

Click to view price, real time Inventory, Delivery & Lifecycle Information:

[Molex Connector Corporation](#)
[1060004000](#)

For any questions, you can email us directly:
sales@integrated-circuit.com



NOTES:

1. THE EACH PAIR OF TWO SMALL COMPARTMENTS CONTAINS COMPONENTS FOR ONE COMPLETE LCD MXT CONNECTOR.
2. THE LARGE COMPARTMENTS CONTAINS ONE TUBE OF "MXT ADHESIVE" AND ACCELERANT BOTTLE.

ENTER DESCRIPTION LC NO: MF2008-0513 DRAWN BY: ZHANGPEIZHNER CHKD: 2008/05/20 APPR: LGMIN 2008/05/20 REV: A1	QUALITY SYMBOLS ▽=0 ▽=0	GENERAL TOLERANCES (UNLESS SPECIFIED) <table border="1"> <thead> <tr> <th></th> <th>mm</th> <th>INCH</th> </tr> </thead> <tbody> <tr> <td>4 PLACES</td> <td>± .005</td> <td>± .0004</td> </tr> <tr> <td>3 PLACES</td> <td>± .005</td> <td>± .0004</td> </tr> <tr> <td>2 PLACES</td> <td>± .005</td> <td>± .0004</td> </tr> <tr> <td>1 PLACE</td> <td>± .005</td> <td>± .0004</td> </tr> </tbody> </table>		mm	INCH	4 PLACES	± .005	± .0004	3 PLACES	± .005	± .0004	2 PLACES	± .005	± .0004	1 PLACE	± .005	± .0004	DIMENSION STYLE IN/MM	SCALE 1:2	DESIGN UNITS INCH	THIRD ANGLE PROJECTION
		mm	INCH																		
	4 PLACES	± .005	± .0004																		
	3 PLACES	± .005	± .0004																		
2 PLACES	± .005	± .0004																			
1 PLACE	± .005	± .0004																			
		DRAWN BY: PGIBLIN DATE: 2005/10/18	CHECKED BY: [blank] DATE: [blank]	TITLE XPRESS TERMINATION PACKAGE, LCD MM JACKETED CABLE VERSION																	
		APPROVED BY: [blank] DATE: [blank]	MATERIAL NO. 1060004000			DOCUMENT NO. SD-106000-4000	SHEET NO. 1 OF 01														
		DRAFT WHERE APPLICABLE MUST REMAIN WITHIN DIMENSIONS	THIS DRAWING CONTAINS INFORMATION THAT IS PROPRIETARY TO MOLEX INCORPORATED AND SHOULD NOT BE USED WITHOUT WRITTEN PERMISSION																		