

Excellent Integrated System Limited

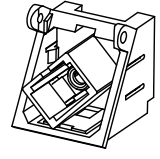
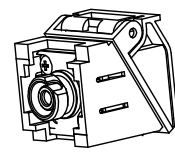
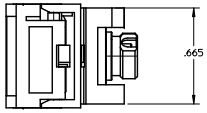
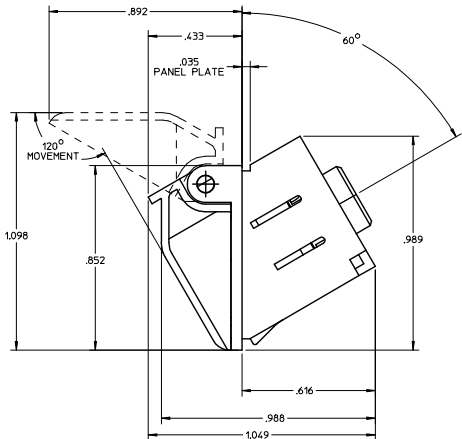
Stocking Distributor

Click to view price, real time Inventory, Delivery & Lifecycle Information:

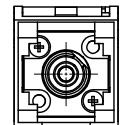
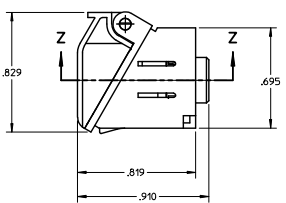
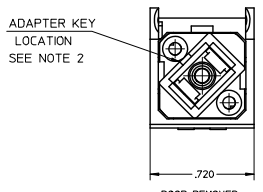
[Molex Connector Corporation](#)
[1060043266](#)

For any questions, you can email us directly:
sales@integrated-circuit.com

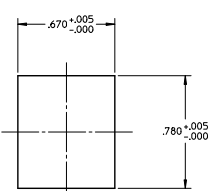
KIT P/N	SLEEVE MAT.	ADAPTER COLOR
106004-3265	PHOSPHOR BRONZE	METAL
106004-3266	ZIRCONIA	



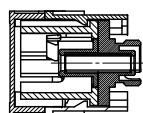
DOOR REMOVED



LABEL SEE NOTE 2



RECOMMENDED MOUNTING HOLE IN THE PANEL PLATE



SECTION Z-Z

NOTES:
1. ALL DIMENSIONS ARE FOR REFERENCE ONLY.
2. LABEL TO BE INSTALLED BY CUSTOMER.

ENTER DESCRIPTION EC NO: MF2009-092 DRAWN: JSZENCZYK CHKD: [blank] APPR: LGM/N B1	QUALITY SYMBOLS ▽=0 ∇=0	GENERAL TOLERANCES (UNLESS SPECIFIED)		DIMENSION STYLE INCH ONLY		SCALE 2:1	DESIGN UNITS INCH	THIRD ANGLE PROJECTION		
		4 PLACES ± .005 ± .005	3 PLACES ± .005 ± .005	2 PLACES ± .005 ± .005	1 PLACE ± .005 ± .005	DRAWN BY PGIBLIN	DATE 2005/11/08	TITLE FC/SC SPX BEZEL ADAPT KIT W/PUSH TAB, BLACK		
		ANGULAR ± 1/2°				CHECKED BY		DATE	APPROVED BY	
		DRAFT WHERE APPLICABLE MUST REMAIN WITHIN DIMENSIONS				MATERIAL NO.		DATE	MOLEX INCORPORATED	
				SEE TABLE		DOCUMENT NO.	SD-106004-326X			
				SIZE C		THIS DRAWING CONTAINS INFORMATION THAT IS PROPRIETARY TO MOLEX INCORPORATED AND SHOULD NOT BE USED WITHOUT WRITTEN PERMISSION				