

Excellent Integrated System Limited

Stocking Distributor

Click to view price, real time Inventory, Delivery & Lifecycle Information:

[Molex Connector Corporation](#)
[1060051501](#)

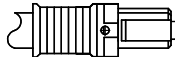
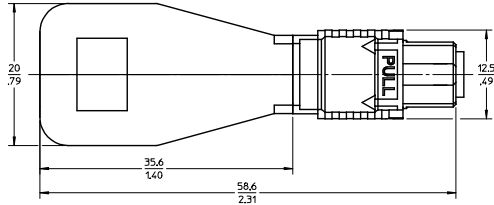
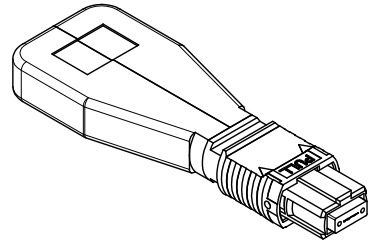
For any questions, you can email us directly:
sales@integrated-circuit.com

PART NUMBER	CHANNELS	TYPE	PINOUT (SEE CHARTS)	INSERTION LOSS SPEC PER ASSEMBLY (SEE NOTE 2)	POLISH TYPE
1060051000	12	SM	12 CHANNEL STANDARD	1.5 dB	APC
1060051001		MM 50/125		1.0 dB	PC
1060051002		MM 62.5/125		5 ±1 dB	APC
1060051003		MM 50/125 5dB ATTEN			
1060051500	8	SM	8 CHANNEL STANDARD	1.5 dB	APC
1060051501		MM 50/125		1.0 dB	PC
1060051502		MM 62.5/125		5 ±1 dB	APC
1060051503		MM 50/125 5dB ATTEN			
1060051100	12	MM 50/125	12 CHANNEL QSFP	1.0 dB	PC
1060051102		MM 50/125		2 ±1 dB	APC
1060051007		SM		1.5 dB	APC

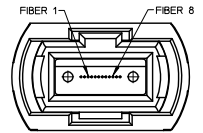
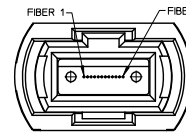
12 CHANNEL STD	
FIBER 1 TO 7	
2 TO 8	
3 TO 9	
4 TO 10	
5 TO 11	
6 TO 12	

12 CHANNEL QSFP	
FIBER 1 TO 12	
2 TO 11	
3 TO 10	
4 TO 9	
5, 6, 7, 8 EMPTY	

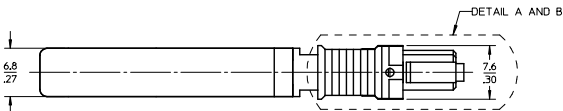
8 CHANNEL STD	
FIBER 1 TO 5	
2 TO 6	
3 TO 7	
4 TO 8	



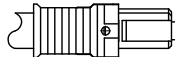
DETAIL A FOR SM ANGLE POLISH (SEE TABLE)



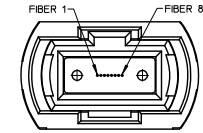
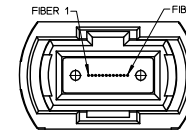
SM ANGLE POLISH IS SHOWN



MM PC POLISH IS SHOWN



DETAIL B FOR MM ANGLE POLISH (SEE TABLE)



MM PC AND ANGLE POLISH ARE SHOWN

PIN OUT DIAGRAMS

NOTES:

- LOOPBACK ASSEMBLY AND ITS COMPONENTS SHALL COMPLY WITH EU DIRECTIVE 2011/65/EU ON THE RESTRICTION OF THE USE OF HAZARDOUS SUBSTANCES IN ELECTRICAL AND ELECTRONIC EQUIPMENT (RoHS).
- INSERTION LOSS (IL) SHOWN IS PER CHANNEL (2 MATED PAIRS).

ENTER DESCRIPTION EC NO: MF2014-0294 DRAWN: GOWIN 2013/11/04 CHKD: GOWIN 2013/11/05 APPR: GOWIN 2013/11/05 F1 REV	QUALITY SYMBOLS ▽=0 ▽=0	GENERAL TOLERANCES (UNLESS SPECIFIED) <table border="1"> <tr> <th></th> <th>mm</th> <th>INCH</th> </tr> <tr> <td>4 PLACES</td> <td>± ---</td> <td>± ---</td> </tr> <tr> <td>3 PLACES</td> <td>± ---</td> <td>± ---</td> </tr> <tr> <td>2 PLACES</td> <td>± ---</td> <td>± ---</td> </tr> <tr> <td>1 PLACE</td> <td>± ---</td> <td>± ---</td> </tr> </table> ANGULAR ± 1 °		mm	INCH	4 PLACES	± ---	± ---	3 PLACES	± ---	± ---	2 PLACES	± ---	± ---	1 PLACE	± ---	± ---	DIMENSION STYLE MM/IN	SCALE 2.5:1	DESIGN UNITS METRIC	THIRD ANGLE PROJECTION
		mm	INCH																		
	4 PLACES	± ---	± ---																		
	3 PLACES	± ---	± ---																		
2 PLACES	± ---	± ---																			
1 PLACE	± ---	± ---																			
DRAWN BY SERNST	DATE 2007/11/12	TITLE LOW PROFILE MTP LOOPBACK CONNECTOR																			
CHECKED BY	DATE	APPROVED BY																			
MATERIAL NO. SEE TABLE	DOCUMENT NO. SD-106005-1000	MOLEX INCORPORATED																			

DRAFT WHERE APPLICABLE MUST REMAIN WITHIN DIMENSIONS

THIS DRAWING CONTAINS INFORMATION THAT IS PROPRIETARY TO MOLEX INCORPORATED AND SHOULD NOT BE USED WITHOUT WRITTEN PERMISSION