

## **Excellent Integrated System Limited**

Stocking Distributor

Click to view price, real time Inventory, Delivery & Lifecycle Information:

[Molex Connector Corporation](#)  
[1060051503](#)

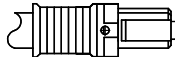
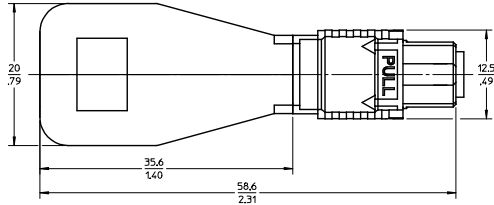
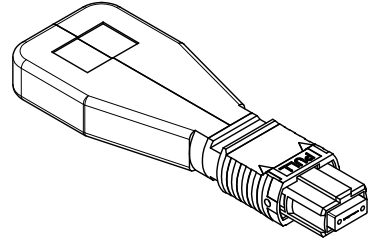
For any questions, you can email us directly:  
[sales@integrated-circuit.com](mailto:sales@integrated-circuit.com)

PART NUMBER	CHANNELS	TYPE	PINOUT (SEE CHARTS)	INSERTION LOSS SPEC PER ASSEMBLY (SEE NOTE 2)	POLISH TYPE
1060051000	12	SM	12 CHANNEL STANDARD	1.5 dB	APC
1060051001		MM 50/125		1.0 dB	PC
1060051002		MM 62.5/125		5 ±1 dB	APC
1060051003		MM 50/125 5dB ATTEN			
1060051500	8	SM	8 CHANNEL STANDARD	1.5 dB	APC
1060051501		MM 50/125		1.0 dB	PC
1060051502		MM 62.5/125		5 ±1 dB	APC
1060051503		MM 50/125 5dB ATTEN			
1060051100	12	MM 50/125	12 CHANNEL QSFP	1.0 dB	PC
1060051102		MM 50/125		2 ±1 dB	APC
1060051007		SM		1.5 dB	APC

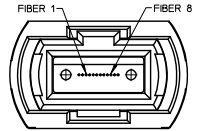
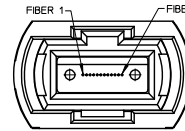
12 CHANNEL STD
FIBER 1 TO 7
2 TO 8
3 TO 9
4 TO 10
5 TO 11
6 TO 12

12 CHANNEL QSFP
FIBER 1 TO 12
2 TO 11
3 TO 10
4 TO 9
5, 6, 7, 8 EMPTY

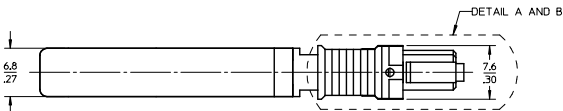
8 CHANNEL STD
FIBER 1 TO 5
2 TO 6
3 TO 7
4 TO 8



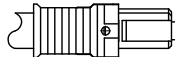
DETAIL A FOR SM ANGLE POLISH (SEE TABLE)



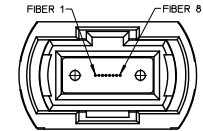
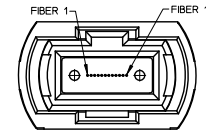
SM ANGLE POLISH IS SHOWN



MM PC POLISH IS SHOWN



DETAIL B FOR MM ANGLE POLISH (SEE TABLE)



MM PC AND ANGLE POLISH ARE SHOWN

PIN OUT DIAGRAMS

NOTES:

- LOOPBACK ASSEMBLY AND ITS COMPONENTS SHALL COMPLY WITH EU DIRECTIVE 2011/65/EU ON THE RESTRICTION OF THE USE OF HAZARDOUS SUBSTANCES IN ELECTRICAL AND ELECTRONIC EQUIPMENT (RoHS).
- INSERTION LOSS (IL) SHOWN IS PER CHANNEL (2 MATED PAIRS).

<b>ENTER DESCRIPTION</b> EC NO: MF2014-0294 DRAWN: GOWIN 2013/11/04 CHKD: GOWIN 2013/11/05 APPR: GOWIN F1 REV	<b>QUALITY SYMBOLS</b> ▽=0 ▽=0	<b>GENERAL TOLERANCES (UNLESS SPECIFIED)</b>		<b>DIMENSION STYLE</b> MM/IN	<b>SCALE</b> 2.5:1	<b>DESIGN UNITS</b> METRIC	THIRD ANGLE PROJECTION		
		4 PLACES ± --- ± --- 3 PLACES ± --- ± --- 2 PLACES ± --- ± --- 1 PLACE ± --- ± ---	mm INCH	DRAWN BY: SERNST CHECKED BY:	DATE: 2007/11/12	<b>TITLE</b> LOW PROFILE MTP LOOPBACK CONNECTOR			
		ANGULAR ± 1 °	DRAFT WHERE APPLICABLE MUST REMAIN WITHIN DIMENSIONS	APPROVED BY:	DATE:	MOLEX INCORPORATED			
		SEE TABLE	THIS DRAWING CONTAINS INFORMATION THAT IS PROPRIETARY TO MOLEX INCORPORATED AND SHOULD NOT BE USED WITHOUT WRITTEN PERMISSION	MATERIAL NO.	DOCUMENT NO.	SD-106005-1000	SHEET NO.	1 OF 1	