

## Excellent Integrated System Limited

Stocking Distributor

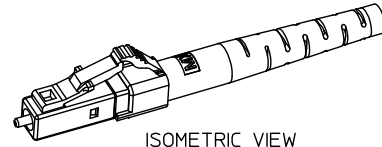
Click to view price, real time Inventory, Delivery & Lifecycle Information:

[Molex Connector Corporation](#)  
[1060243250](#)

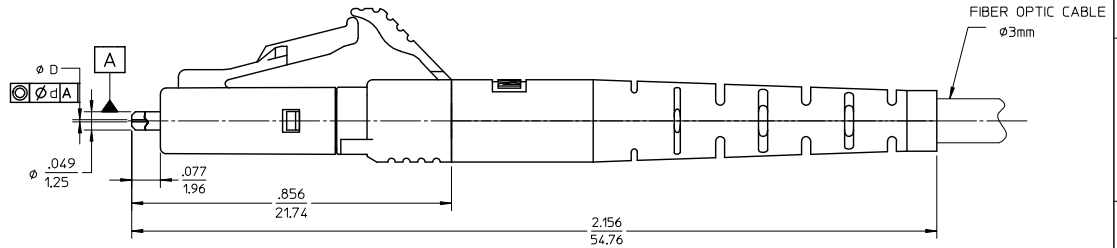
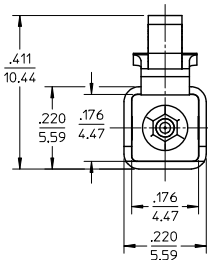
For any questions, you can email us directly:

[sales@integrated-circuit.com](mailto:sales@integrated-circuit.com)

CONNECTOR P/N	ØD (µm)	Ød (µm)	FERRULE MATERIAL	CONN. BODY COLOR	CONN. BOOT COLOR	CABLE TYPE
106024-2250	125.5 <sup>+0.5</sup> <sub>0</sub>	1	Zr	BLUE	WHITE	SINGLE MODE
106024-3250	127 <sup>+3</sup> <sub>0</sub>	3		BEIGE		MULTIMODE
106024-3260 <sup>△</sup>						
106024-4250	125 <sup>+0.5</sup> <sub>0</sub>	1		BLUE		SINGLE MODE
106024-5250	126 <sup>+1</sup> <sub>0</sub>					
106024-5251 <sup>△</sup>						
106024-6250	125.25 <sup>+0.5</sup> <sub>0</sub>	0.5				
106024-2270	125.25 <sup>+0.5</sup> <sub>0</sub>	0.5	LOW COST Zr	BEIGE		MULTIMODE
106024-3259	127 <sup>+3</sup> <sub>0</sub>	3		BLUE		SINGLE MODE
106024-5259	126 <sup>+1</sup> <sub>0</sub>	1				



ISOMETRIC VIEW  
SCALE 2:1



NOTES:  
1. ALL DIMENSIONS ARE FOR REFERENCE ONLY.  
2. DUST CAP IS NOT SHOWN.  
<sup>△</sup> P/N 106024-5251 AND 106024-3260 ARE BULK PACKED IN QUANTITY OF 100 PIECES.

ENTER DESCRIPTION EC. NO: MF2013-0244 DRAWN: KREYNER 2012/10/30 CHKD: LHM/N APPR: LHM/N 2012/10/31	QUALITY SYMBOLS ▽=0 ▽=0 ▽=0	GENERAL TOLERANCES (UNLESS SPECIFIED)		DIMENSION STYLE		SCALE	DESIGN UNITS	THIRD ANGLE PROJECTION
		mm	INCH	IN/MM	INCH	4:1	INCH	
B1	DESCRIPTION	4 PLACES	±	---	±	---	DRAWN BY PGIBLIN	DATE 2005/11/10
		3 PLACES	±	---	±	---		CHECKED BY
		2 PLACES	±	---	±	---	APPROVED BY	DATE
		1 PLACE	±	---	±	---	MATERIAL NO.	
		0 PLACE	±	---	±	---	DOCUMENT NO.	
		ANGULAR ±1/2°		SEE TABLE		SD-106024-X250		SHEET NO. 1 OF 1
		DRAFT WHERE APPLICABLE MUST REMAIN WITHIN DIMENSIONS		SIZE B		THIS DRAWING CONTAINS INFORMATION THAT IS PROPRIETARY TO MOLEX INCORPORATED AND SHOULD NOT BE USED WITHOUT WRITTEN PERMISSION		