

Excellent Integrated System Limited

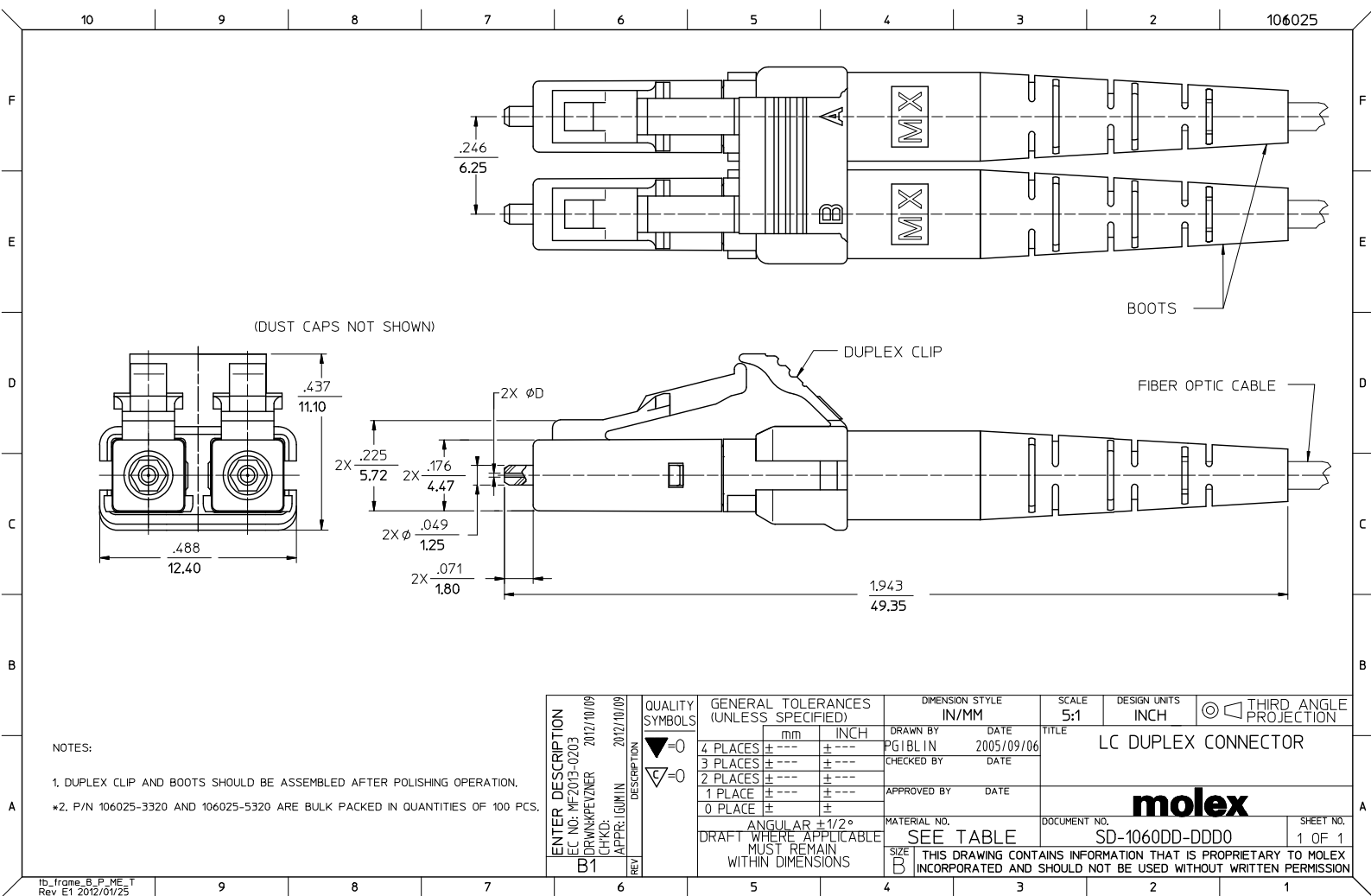
Stocking Distributor

Click to view price, real time Inventory, Delivery & Lifecycle Information:

[Molex Connector Corporation](#)
[1060253000](#)

For any questions, you can email us directly:

sales@integrated-circuit.com



CONNECTOR P/N	ØD (μm)	CONNECTOR BODY COLOR	BOOT COLOR	CABLE DESCRIPTION & ϕ (mm)	CABLE TYPE
106025-2000	125.50	BLUE	WHITE	SIMPLEX 1.6	SINGLE MODE
106025-2300			BLACK	SIMPLEX 2.0 ZIPCORD 1.6	
106025-2310					
106025-3000	127.00	BEIGE	WHITE	SIMPLEX 1.6	MULTIMODE
106025-3300				SIMPLEX 2.0 ZIPCORD 1.6	
106025-3320*					
106025-3310			BLUE		
106025-4000	125.00	BLUE	WHITE	SIMPLEX 1.6	SINGLE MODE
106025-4300				SIMPLEX 2.0 ZIPCORD 1.6	
106025-5000	126.00			SIMPLEX 1.6	
106025-5300				SIMPLEX 2.0 ZIPCORD 1.6	
106025-5320*					
106025-5310	BLUE				
106025-6000	125.25		WHITE	SIMPLEX 1.6	
106025-6300				SIMPLEX 2.0 ZIPCORD 1.6	

ENTER DESCRIPTION EC NO: ME2013-0203 DRWN:KEVZNER 2012/10/09 CHKD: APPR: IGUMIN 2012/10/09 REV	QUALITY SYMBOLS ▽=0 ▽=0	GENERAL TOLERANCES (UNLESS SPECIFIED)		DIMENSION STYLE IN/MM	SCALE 5:1	DESIGN UNITS INCH	THIRD ANGLE PROJECTION
		4 PLACES	± ---	± ---	DRAWN BY PGIBL IN	DATE 2005/09/06	TITLE LC DUPLEX CONNECTOR
		3 PLACES	± ---	± ---	CHECKED BY	DATE	
		2 PLACES	± ---	± ---	APPROVED BY	DATE	
		1 PLACE	± ---	± ---			
B1	REV	0 PLACE	±	±	MATERIAL NO.	DOCUMENT NO.	SHEET NO.
		ANGULAR ±1/2°		SEE TABLE		SD-1060DD-DDD0	2 OF 1
		DRAFT WHERE APPLICABLE MUST REMAIN WITHIN DIMENSIONS		THIS DRAWING CONTAINS INFORMATION THAT IS PROPRIETARY TO MOLEX INCORPORATED AND SHOULD NOT BE USED WITHOUT WRITTEN PERMISSION			