

Excellent Integrated System Limited

Stocking Distributor

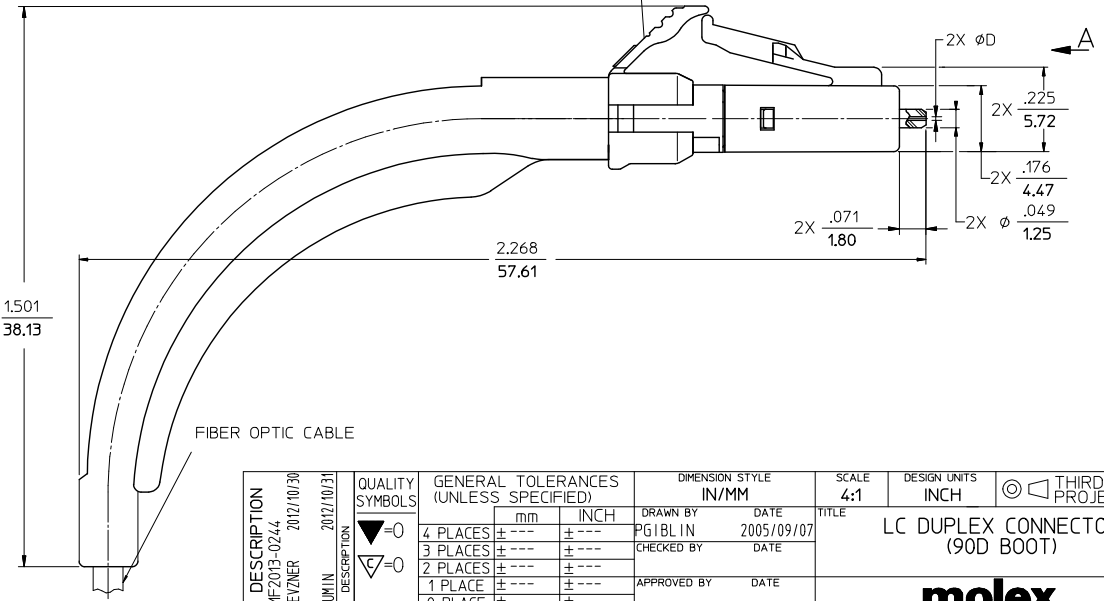
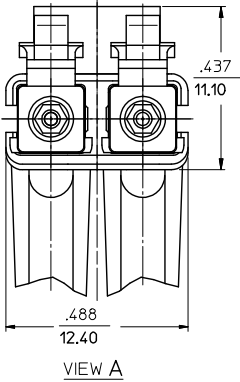
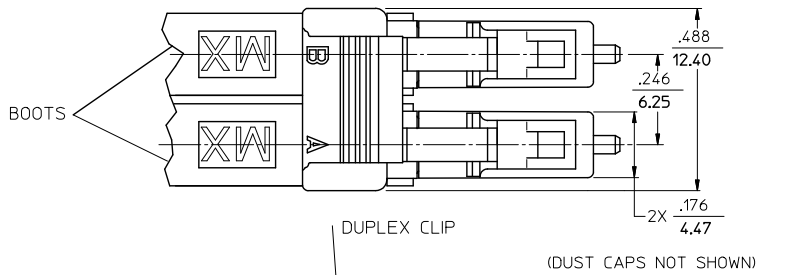
Click to view price, real time Inventory, Delivery & Lifecycle Information:

[Molex Connector Corporation](#)
[1060253600](#)

For any questions, you can email us directly:

sales@integrated-circuit.com

CONNECTOR P/N	ØD (Hm)	CONNECTOR BODY COLOR	BOOT COLOR	CABLE Ø (mm)	CABLE TYPE
106025-2400	125.50	BLUE	WHITE	1.6	SINGLE MODE
106025-2600				2.0	
106025-3400	127.00	BEIGE		1.6	MULTIMODE
106025-3600				2.0	
106025-4400	125.00	BLUE		1.6	SINGLE MODE
106025-4600				2.0	
106025-5400	126.00			1.6	
106025-5600				2.0	
106025-6400	125.25			1.6	
106025-6600				2.0	



NOTES:
1. DUPLEX CLIP AND BOOTS SHOULD BE ASSEMBLED AFTER POLISHING OPERATION.

ENTER DESCRIPTION E.C. NO: ME2013-0244 DRAWN/REVISED: 2012/10/30 CHKD: [blank] APPR: [blank]	QUALITY SYMBOLS ▽=0 ▽=0	GENERAL TOLERANCES (UNLESS SPECIFIED)		DIMENSION STYLE IN/MM		SCALE 4:1	DESIGN UNITS INCH	THIRD ANGLE PROJECTION
		4 PLACES ± --- ± --- 3 PLACES ± --- ± --- 2 PLACES ± --- ± --- 1 PLACE ± --- ± --- 0 PLACE ± --- ± ---	mm INCH	DRAWN BY: PGIBLIN DATE: 2005/09/07	TITLE LC DUPLEX CONNECTOR (90D BOOT)			
REV A1	DESCRIPTION A1	ANGULAR ±1/2° DRAFT WHERE APPLICABLE MUST REMAIN WITHIN DIMENSIONS		APPROVED BY: [blank] DATE: [blank]		MATERIAL NO. SEE TABLE		DOCUMENT NO. SD-1060EE-EEEE
SIZE B				THIS DRAWING CONTAINS INFORMATION THAT IS PROPRIETARY TO MOLEX INCORPORATED AND SHOULD NOT BE USED WITHOUT WRITTEN PERMISSION				