

## **Excellent Integrated System Limited**

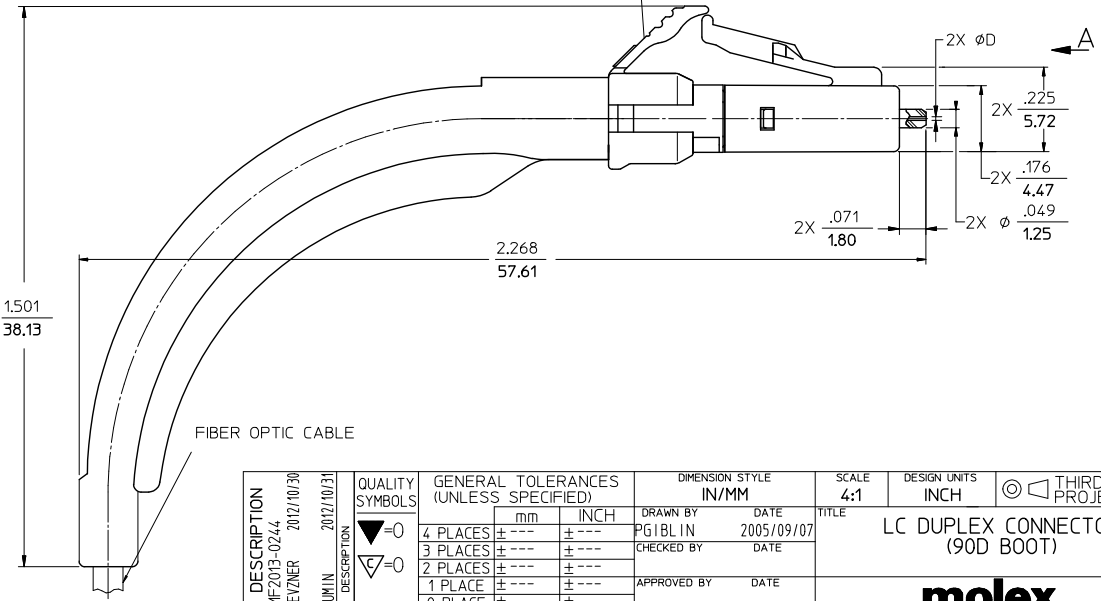
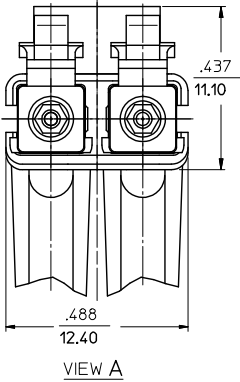
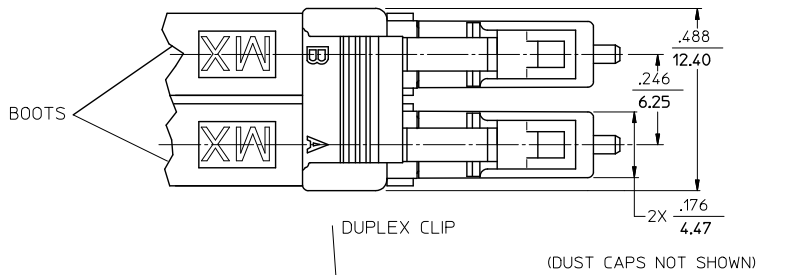
Stocking Distributor

Click to view price, real time Inventory, Delivery & Lifecycle Information:

[Molex Connector Corporation](#)  
[1060255600](#)

For any questions, you can email us directly:  
[sales@integrated-circuit.com](mailto:sales@integrated-circuit.com)

CONNECTOR P/N	ØD (Hm)	CONNECTOR BODY COLOR	BOOT COLOR	CABLE Ø (mm)	CABLE TYPE
106025-2400	125.50	BLUE	WHITE	1.6	SINGLE MODE
106025-2600	125.50	BLUE		2.0	
106025-3400	127.00	BEIGE		1.6	MULTIMODE
106025-3600				2.0	
106025-4400	125.00	BLUE	WHITE	1.6	SINGLE MODE
106025-4600	126.00			2.0	
106025-5400				1.6	
106025-5600				2.0	
106025-6400				1.6	
106025-6600	125.25			2.0	



NOTES:  
1. DUPLEX CLIP AND BOOTS SHOULD BE ASSEMBLED AFTER POLISHING OPERATION.

<b>ENTER DESCRIPTION</b> E.C. NO: ME2013-0244 DRAWN/REVISED: 2012/10/30 CHKD: [NAME] APPR: [NAME]	<b>QUALITY SYMBOLS</b> ▽=0 ▽=0	<b>GENERAL TOLERANCES (UNLESS SPECIFIED)</b>		<b>DIMENSION STYLE</b> IN/MM		<b>SCALE</b> 4:1	<b>DESIGN UNITS</b> INCH	<input checked="" type="checkbox"/> THIRD ANGLE PROJECTION
		4 PLACES ± --- ± --- 3 PLACES ± --- ± --- 2 PLACES ± --- ± --- 1 PLACE ± --- ± --- 0 PLACE ± --- ± ---	mm INCH	DRAWN BY: PGIBLIN DATE: 2005/09/07	<b>TITLE</b> LC DUPLEX CONNECTOR (90D BOOT)			
<b>REV</b> A1	<b>DESCRIPTION</b> A1	ANGULAR ±1/2° DRAFT WHERE APPLICABLE MUST REMAIN WITHIN DIMENSIONS		APPROVED BY: [NAME] DATE: [DATE]		<b>MATERIAL NO.</b> SEE TABLE		<b>DOCUMENT NO.</b> SD-1060EE-EEEE
SIZE B				THIS DRAWING CONTAINS INFORMATION THAT IS PROPRIETARY TO MOLEX INCORPORATED AND SHOULD NOT BE USED WITHOUT WRITTEN PERMISSION				