

Excellent Integrated System Limited

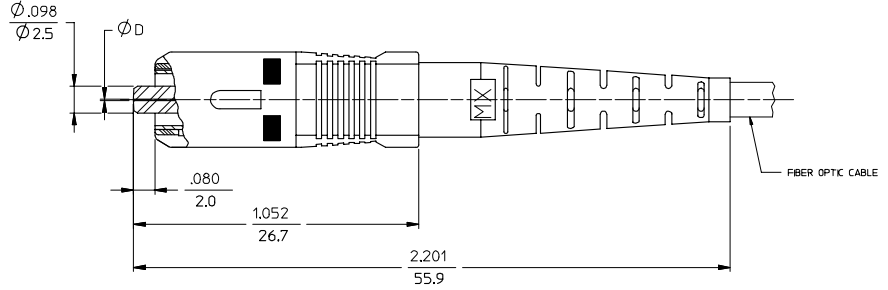
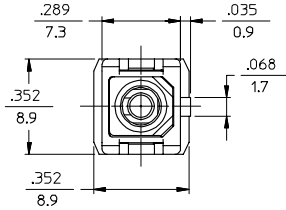
Stocking Distributor

Click to view price, real time Inventory, Delivery & Lifecycle Information:

[Molex Connector Corporation](#)
[1060320170](#)

For any questions, you can email us directly:

sales@integrated-circuit.com



NOTES:

1. ALL DIMENSIONS ARE FOR REFERENCE ONLY.

*2. P/NS 106032-5020, 106032-0140, 106032-5310, 106032-5990 AND 106032-0910 ARE BULK PACKED IN QUANTITIES OF 100 pcs.

ENTER DESCRIPTION ILC NO: MF2007-0445 DRAWN BY: ZNER CHKD: ZNER APPR: IGMIN DATE: 2007/11/12 DATE: 2007/11/12 DATE: 2007/11/15	QUALITY SYMBOLS	GENERAL TOLERANCES (UNLESS SPECIFIED)		DIMENSION STYLE	SCALE	DESIGN UNITS	THIRD ANGLE PROJECTION	
	$\nabla=0$ $\sphericalangle=0$	mm	INCH	IN/MM	4:1	INCH		
		4 PLACES ± --- ± ---	3 PLACES ± --- ± ---	2 PLACES ± --- ± ---	1 PLACE ± --- ± ---	DRAWN BY: RPACIFIC DATE: 2005/12/22		TITLE: SC CONNECTOR (TUNABLE)
		ANGULAR ±1/2°		APPROVED BY: DATE:		MOLEX INCORPORATED		
	DRAFT WHERE APPLICABLE MUST REMAIN WITHIN DIMENSIONS	SEE TABLE	MATERIAL NO.	DOCUMENT NO.	SD-106032-XXX0		SHEET NO. 1 OF 3	
B1	REV	THIS DRAWING CONTAINS INFORMATION THAT IS PROPRIETARY TO MOLEX INCORPORATED AND SHOULD NOT BE USED WITHOUT WRITTEN PERMISSION						

10	9	8	7	6	5	4	3	2	1				
CONNECTOR P/N	Ø (Hm)	BOOT COLOR	HOUSING COLOR	CONNECTOR TYPE	CABLE (mm)	CONNECTOR P/N	Ø (Hm)	BOOT COLOR	HOUSING COLOR	CONNECTOR TYPE	CABLE (mm)		
106032-0000	127	BLUE	BLUE	MULTIMODE	3	106032-3000	128	BLUE	BLUE	MULTIMODE	3		
106032-0900					2.0 & 1.6 DUPLEX	106032-3900					2.0 & 1.6 DUPLEX		
106032-0100					1.6 SIMPLEX	106032-3100					1.6 SIMPLEX		
106032-0050					3	106032-3060					3		
106032-0950					2.0 & 1.6 DUPLEX	106032-3960					2.0 & 1.6 DUPLEX		
106032-0150					1.6 SIMPLEX	106032-3160					1.6 SIMPLEX		
106032-0060		3	106032-3050		3								
106032-0910*		2.0 & 1.6 DUPLEX	106032-3950		2.0 & 1.6 DUPLEX								
106032-0150		BEIGE	BEIGE		1.6 SIMPLEX	106032-3150		1.6 SIMPLEX					
106032-0960					3	106032-3080		3					
106032-0140*					2.0 & 1.6 DUPLEX	106032-3980		2.0 & 1.6 DUPLEX					
106032-0160					1.6 SIMPLEX	106032-3180		1.6 SIMPLEX					
106032-0080	3			106032-3070	3								
106032-0980	2.0 & 1.6 DUPLEX			106032-3970	2.0 & 1.6 DUPLEX								
106032-0180	RED	RED	1.6 SIMPLEX	106032-3170	1.6 SIMPLEX								
106032-0070			3										
106032-0970			2.0 & 1.6 DUPLEX										
106032-0170			1.6 SIMPLEX										
106032-2000			125.5	YELLOW	SINGLE MODE	3							
106032-2900						2.0 & 1.6 DUPLEX							
106032-2100	1.6 SIMPLEX	BLUE											
106032-2050	3												
106032-2950	WHITE					BLACK	2.0 & 1.6 DUPLEX						
106032-2150							1.6 SIMPLEX						
106032-2080				3									
106032-2980				2.0 & 1.6 DUPLEX									
106032-2180		1.6 SIMPLEX											
106032-2070		3											
106032-2970	BLACK	BLACK		2.0 & 1.6 DUPLEX									
106032-2170				1.6 SIMPLEX									

ENTER DESCRIPTION EC NO: ME2007-0445 DRAWN BY: DRINKWELTZNER CHKD: 2007/01/12 APPR: GUMIN 2007/01/15	QUALITY SYMBOLS ▽=0 ▽=0	GENERAL TOLERANCES (UNLESS SPECIFIED)		DIMENSION STYLE	SCALE	DESIGN UNITS	THIRD ANGLE PROJECTION	
		mm	INCH	IN/MM	4:1	INCH		
		4 PLACES ± --- ± ---		DRAWN BY	DATE	TITLE		
		3 PLACES ± --- ± ---		RPACIFIC1	2005/12/22	SC CONNECTOR (TUNABLE)		
2 PLACES ± --- ± ---		CHECKED BY	DATE	MOLEX INCORPORATED				
1 PLACE ± --- ± ---		APPROVED BY	DATE					
ANGULAR ±1/2°		MATERIAL NO.	DOCUMENT NO.	SHEET NO.				
		SEE TABLE	SD-106032-XXX0	2 OF 3				
DRAFT WHERE APPLICABLE MUST REMAIN WITHIN DIMENSIONS		SIZE	THIS DRAWING CONTAINS INFORMATION THAT IS PROPRIETARY TO MOLEX INCORPORATED AND SHOULD NOT BE USED WITHOUT WRITTEN PERMISSION					
		B						

10	9	8	7	6	5	4	3	2	106032		
CONNECTOR P/N	Ø (mm)	BOOT COLOR	HOUSING COLOR	CONNECTOR TYPE	CABLE (mm)	CONNECTOR P/N	Ø (mm)	BOOT COLOR	HOUSING COLOR	CONNECTOR TYPE	CABLE (mm)
106032-4000	125	YELLOW	BLUE	SINGLE MODE	3	106032-6000	125.5	YELLOW	BLUE	SINGLE MODE	3
106032-4900					2.0 & 1.6 DUPLEX	106032-6900					2.0 & 1.6 DUPLEX
106032-4100					1.6 SIMPLEX	106032-6100					1.6 SIMPLEX
106032-4050					3	106032-7000					3
106032-4950					2.0 & 1.6 DUPLEX	106032-7900					2.0 & 1.6 DUPLEX
106032-4150		1.6 SIMPLEX	106032-7100		1.6 SIMPLEX						
106032-4080		3	106032-7050		3						
106032-4980		2.0 & 1.6 DUPLEX	106032-7950		2.0 & 1.6 DUPLEX						
106032-4180		1.6 SIMPLEX	106032-7150		1.6 SIMPLEX						
106032-4070		3	106032-7080		3						
106032-4970	126	BLACK	BLACK	SINGLE MODE	2.0 & 1.6 DUPLEX	106032-7980	127	WHITE	RED	SINGLE MODE	2.0 & 1.6 DUPLEX
106032-4170					1.6 SIMPLEX	106032-7180					1.6 SIMPLEX
106032-5000					3	106032-7070					3
106032-5020*					2.4	106032-7970					2.0 & 1.6 DUPLEX
106032-5300*					2.0 & 1.6 DUPLEX	106032-7170					1.6 SIMPLEX
106032-5310*		1.6 SIMPLEX									
106032-5900		3									
106032-5990*		2.0 & 1.6 DUPLEX									
106032-5100		1.6 SIMPLEX									
106032-5050		WHITE	BLUE		SINGLE MODE	3					
106032-5950	2.0 & 1.6 DUPLEX										
106032-5150	1.6 SIMPLEX										
106032-5080	3										
106032-5980	2.0 & 1.6 DUPLEX										
106032-5180	RED	RED	SINGLE MODE	1.6 SIMPLEX							
106032-5070				3							
106032-5970				2.0 & 1.6 DUPLEX							
106032-5170				1.6 SIMPLEX							

ENTER DESCRIPTION EC NO: MF2007-0445 DRAWN BY: DRINKWELTZNER CHKD: 2007/01/12 APPR: GUMIN 2007/01/15	QUALITY SYMBOLS ▽=0 ▽=0	GENERAL TOLERANCES (UNLESS SPECIFIED)		DIMENSION STYLE	SCALE	DESIGN UNITS	THIRD ANGLE PROJECTION	
				IN/MM	4:1	INCH		
		4 PLACES	±	---	±	---	DRAWN BY: RPACIFIC1 DATE: 2005/12/22	
		3 PLACES	±	---	±	---	CHECKED BY: DATE:	
2 PLACES	±	---	±	---	APPROVED BY: DATE:		TITLE: SC CONNECTOR (TUNABLE)	
1 PLACE	±	---	±	---	MATERIAL NO.:		MOLEX INCORPORATED	
ANGULAR ±1/2°				DOCUMENT NO.:		SHEET NO.:		
DRAFT WHERE APPLICABLE MUST REMAIN WITHIN DIMENSIONS				SEE TABLE		SD-106032-XXX0		
				SIZE B		THIS DRAWING CONTAINS INFORMATION THAT IS PROPRIETARY TO MOLEX INCORPORATED AND SHOULD NOT BE USED WITHOUT WRITTEN PERMISSION		