

Excellent Integrated System Limited

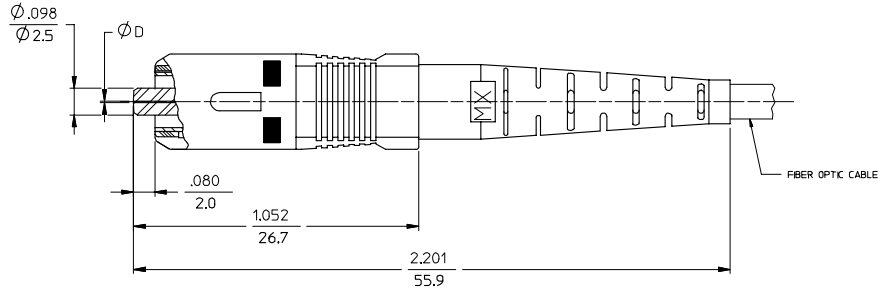
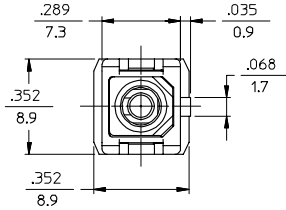
Stocking Distributor

Click to view price, real time Inventory, Delivery & Lifecycle Information:

[Molex Connector Corporation](#)
[1060320180](#)

For any questions, you can email us directly:

sales@integrated-circuit.com



NOTES:

1. ALL DIMENSIONS ARE FOR REFERENCE ONLY.

*2. P/NS 106032-5020, 106032-0140, 106032-5310, 106032-5990 AND 106032-0910 ARE BULK PACKED IN QUANTITIES OF 100 pcs.

ENTER DESCRIPTION I.C. NO: MF2007-0445 DRAWN BY: DRINKREVZNER CHKD: 2007/01/12 APPR: IGMIN 2007/01/15 REV: B1	QUALITY SYMBOLS	GENERAL TOLERANCES (UNLESS SPECIFIED)	DIMENSION STYLE	SCALE	DESIGN UNITS	THIRD ANGLE PROJECTION	
	$\nabla=0$ $\sphericalangle=0$	mm INCH 4 PLACES ±--- ±--- 3 PLACES ±--- ±--- 2 PLACES ±--- ±--- 1 PLACE ±--- ±--- ANGULAR ±1/2°	IN/MM	4:1	INCH	DRAWN BY DATE RPACIFIC I 2005/12/22 CHECKED BY DATE APPROVED BY DATE	TITLE SC CONNECTOR (TUNABLE)
	DRAFT WHERE APPLICABLE MUST REMAIN WITHIN DIMENSIONS	MATERIAL NO. SEE TABLE	DOCUMENT NO. SD-106032-XXX0	MOLEX INCORPORATED	SHEET NO. 1 OF 3		
	SIZE C	THIS DRAWING CONTAINS INFORMATION THAT IS PROPRIETARY TO MOLEX INCORPORATED AND SHOULD NOT BE USED WITHOUT WRITTEN PERMISSION					

10	9	8	7	6	5	4	3	2	1		
CONNECTOR P/N	Ø (Hm)	BOOT COLOR	HOUSING COLOR	CONNECTOR TYPE	CABLE (mm)	CONNECTOR P/N	Ø (Hm)	BOOT COLOR	HOUSING COLOR	CONNECTOR TYPE	CABLE (mm)
106032-0000	127	BLUE	BLUE	MULTIMODE	3	106032-3000	128	BLUE	BLUE	MULTIMODE	3
106032-0900					2.0 & 1.6 DUPLEX	106032-3900					2.0 & 1.6 DUPLEX
106032-0100					1.6 SIMPLEX	106032-3100					1.6 SIMPLEX
106032-0050		WHITE	BEIGE		3	106032-3060		3			
106032-0950					2.0 & 1.6 DUPLEX	106032-3960		2.0 & 1.6 DUPLEX			
106032-0150					1.6 SIMPLEX	106032-3160		1.6 SIMPLEX			
106032-0060		BEIGE	BEIGE		3	106032-3050		3			
106032-0910*					2.0 & 1.6 DUPLEX	106032-3950		2.0 & 1.6 DUPLEX			
106032-0960					1.6 SIMPLEX	106032-3150		1.6 SIMPLEX			
106032-0140*		RED	RED		3	106032-3080		3			
106032-0160					2.0 & 1.6 DUPLEX	106032-3980		2.0 & 1.6 DUPLEX			
106032-0080					1.6 SIMPLEX	106032-3180		1.6 SIMPLEX			
106032-0980	BLACK	BLACK	3	106032-3070	3						
106032-0180			2.0 & 1.6 DUPLEX	106032-3180	2.0 & 1.6 DUPLEX						
106032-0070			1.6 SIMPLEX	106032-3070	1.6 SIMPLEX						
106032-0970	YELLOW	BLUE	3	106032-3970	2.0 & 1.6 DUPLEX						
106032-0170			2.0 & 1.6 DUPLEX	106032-3170	1.6 SIMPLEX						
106032-2000			1.6 SIMPLEX								
106032-2900	WHITE	RED	3								
106032-2100			2.0 & 1.6 DUPLEX								
106032-2050			1.6 SIMPLEX								
106032-2950	RED	RED	3								
106032-2150			2.0 & 1.6 DUPLEX								
106032-2080			1.6 SIMPLEX								
106032-2980	BLACK	BLACK	3								
106032-2180			2.0 & 1.6 DUPLEX								
106032-2070			1.6 SIMPLEX								
106032-2970			3								
106032-2170			2.0 & 1.6 DUPLEX								
			1.6 SIMPLEX								

ENTER DESCRIPTION EC NO: MF2007-0445 DRAWN BY: DRINKWELTZNER CHKD: 2007/01/12 APPR: GUMIN 2007/01/15	QUALITY SYMBOLS ▽=0 ▽=0	GENERAL TOLERANCES (UNLESS SPECIFIED)		DIMENSION STYLE	SCALE	DESIGN UNITS	THIRD ANGLE PROJECTION	
		4 PLACES	±	---	IN/MM	4:1	INCH	SC CONNECTOR (TUNABLE)
		3 PLACES	±	---				
		2 PLACES	±	---				
1 PLACE	±	---						
ANGULAR ±1/2°		DRAWN BY: RPACIFIC1		DATE: 2005/12/22	MATERIAL NO.			
DRAFT WHERE APPLICABLE MUST REMAIN WITHIN DIMENSIONS		CHECKED BY:		DATE:	DOCUMENT NO. SD-106032-XXX0		SHEET NO. 2 OF 3	
REV: B1		APPROVED BY:		DATE:	MATERIAL NO. SEE TABLE		THIS DRAWING CONTAINS INFORMATION THAT IS PROPRIETARY TO MOLEX INCORPORATED AND SHOULD NOT BE USED WITHOUT WRITTEN PERMISSION	

10	9	8	7	6	5	4	3	2	106032					
CONNECTOR P/N	Ø (mm)	BOOT COLOR	HOUSING COLOR	CONNECTOR TYPE	CABLE (mm)	CONNECTOR P/N	Ø (mm)	BOOT COLOR	HOUSING COLOR	CONNECTOR TYPE	CABLE (mm)			
106032-4000	125	YELLOW	BLUE	SINGLE MODE	3	106032-6000	125.5	YELLOW	BLUE	SINGLE MODE	3			
106032-4900					2.0 & 1.6 DUPLEX	106032-6900					2.0 & 1.6 DUPLEX			
106032-4100					1.6 SIMPLEX	106032-6100					1.6 SIMPLEX			
106032-4050					3	106032-7000					3			
106032-4950					2.0 & 1.6 DUPLEX	106032-7900					2.0 & 1.6 DUPLEX			
106032-4150		1.6 SIMPLEX	106032-7100		1.6 SIMPLEX									
106032-4080		3	106032-7050		3									
106032-4980		2.0 & 1.6 DUPLEX	106032-7950		2.0 & 1.6 DUPLEX									
106032-4180		1.6 SIMPLEX	106032-7150		1.6 SIMPLEX									
106032-4070		3	106032-7080		3									
106032-4970	126	BLACK	BLACK	SINGLE MODE	2.0 & 1.6 DUPLEX	106032-7980	127	WHITE	RED	SINGLE MODE	2.0 & 1.6 DUPLEX			
106032-4170					1.6 SIMPLEX	106032-7180					1.6 SIMPLEX			
106032-5000					3	106032-7070					3			
106032-5020*					2.4	106032-7970					2.0 & 1.6 DUPLEX			
106032-5300*					2.0 & 1.6 DUPLEX	106032-7170					1.6 SIMPLEX			
106032-5310*		1.6 SIMPLEX												
106032-5900		3												
106032-5990*		2.0 & 1.6 DUPLEX												
106032-5100		1.6 SIMPLEX												
106032-5050		126	WHITE		BLUE	SINGLE MODE		3						
106032-5950	2.0 & 1.6 DUPLEX													
106032-5150	1.6 SIMPLEX													
106032-5080	3													
106032-5980	2.0 & 1.6 DUPLEX													
106032-5180	1.6 SIMPLEX													
106032-5070	3													
106032-5970	2.0 & 1.6 DUPLEX													
106032-5170	1.6 SIMPLEX													

ENTER DESCRIPTION EC NO: MF2007-0445 DRAWN: REIZNER CHKD: GUMIN APPR: GUMIN B1	QUALITY SYMBOLS ▽=0 ▽=0	GENERAL TOLERANCES (UNLESS SPECIFIED)		DIMENSION STYLE	SCALE	DESIGN UNITS	THIRD ANGLE PROJECTION	
		mm	INCH	IN/MM	4:1	INCH		
		4 PLACES ± --- ± ---		DRAWN BY	DATE	TITLE		
		3 PLACES ± --- ± ---		RPACIFIC1	2005/12/22	SC CONNECTOR (TUNABLE)		
2 PLACES ± --- ± ---		CHECKED BY	DATE	APPROVED BY				
1 PLACE ± --- ± ---		APPROVED BY	DATE	MATERIAL NO.				
ANGULAR ±1/2°		DRAFT WHERE APPLICABLE MUST REMAIN WITHIN DIMENSIONS		SEE TABLE		DOCUMENT NO.		
				SD-106032-XXX0		SHEET NO.		
				THIS DRAWING CONTAINS INFORMATION THAT IS PROPRIETARY TO MOLEX INCORPORATED AND SHOULD NOT BE USED WITHOUT WRITTEN PERMISSION		3 OF 03		