

Excellent Integrated System Limited

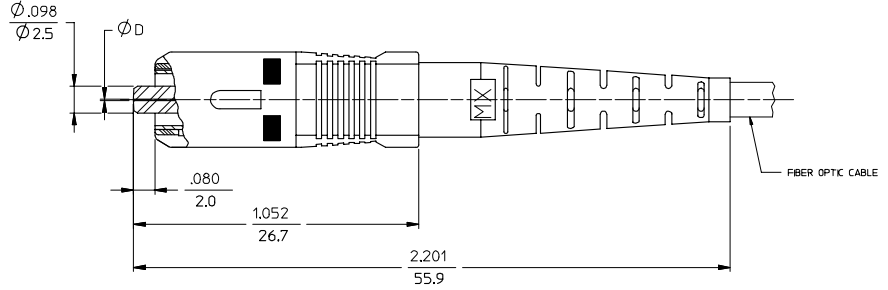
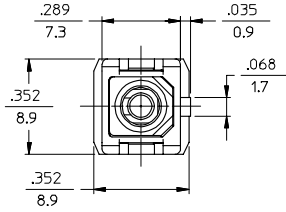
Stocking Distributor

Click to view price, real time Inventory, Delivery & Lifecycle Information:

[Molex Connector Corporation](#)
[1060323080](#)

For any questions, you can email us directly:

sales@integrated-circuit.com



NOTES:

1. ALL DIMENSIONS ARE FOR REFERENCE ONLY.

*2. P/NS 106032-5020, 106032-0140, 106032-5310, 106032-5990 AND 106032-0910 ARE BULK PACKED IN QUANTITIES OF 100 pcs.

ENTER DESCRIPTION I.C. NO: MF2007-0445 DRAWN BY: RPAKIC/1 CHKD: RPAKIC/1 APPR: IGMIN DATE: 2007/11/12 DATE: 2007/11/12 DATE: 2007/11/15	QUALITY SYMBOLS $\nabla=0$ $\sphericalangle=0$	GENERAL TOLERANCES (UNLESS SPECIFIED)		DIMENSION STYLE IN/MM	SCALE 4:1	DESIGN UNITS INCH	THIRD ANGLE PROJECTION		
		4 PLACES ±--- ±---	3 PLACES ±--- ±---	2 PLACES ±--- ±---	1 PLACE ±--- ±---	DRAWN BY: RPAKIC/1 DATE: 2005/12/22	TITLE: SC CONNECTOR (TUNABLE)		
		ANGULAR ±1/2°				APPROVED BY: _____ DATE: _____	MOLEX INCORPORATED		
		DRAFT WHERE APPLICABLE MUST REMAIN WITHIN DIMENSIONS		MATERIAL NO. SEE TABLE SIZE C	DOCUMENT NO. SD-106032-XXX0	SHEET NO. 1 OF 3	THIS DRAWING CONTAINS INFORMATION THAT IS PROPRIETARY TO MOLEX INCORPORATED AND SHOULD NOT BE USED WITHOUT WRITTEN PERMISSION		

10	9	8	7	6	5	4	3	2	1			
CONNECTOR P/N	Ø (Hm)	BOOT COLOR	HOUSING COLOR	CONNECTOR TYPE	CABLE (mm)	CONNECTOR P/N	Ø (Hm)	BOOT COLOR	HOUSING COLOR	CONNECTOR TYPE	CABLE (mm)	
106032-0000	127	BLUE	BLUE	MULTIMODE	3	106032-3000	128	BLUE	BLUE	MULTIMODE	3	
106032-0900					2.0 & 1.6 DUPLEX	106032-3900					2.0 & 1.6 DUPLEX	
106032-0100					1.6 SIMPLEX	106032-3100					1.6 SIMPLEX	
106032-0050					3	106032-3060					3	
106032-0950					2.0 & 1.6 DUPLEX	106032-3960					2.0 & 1.6 DUPLEX	
106032-0150					1.6 SIMPLEX	106032-3160					1.6 SIMPLEX	
106032-0060		3	106032-3050		3							
106032-0910*		2.0 & 1.6 DUPLEX	106032-3950		2.0 & 1.6 DUPLEX							
106032-0960		1.6 SIMPLEX	106032-3150		1.6 SIMPLEX							
106032-0140*		3	106032-3080		3							
106032-0160		2.0 & 1.6 DUPLEX	106032-3980		2.0 & 1.6 DUPLEX							
106032-0080		3	106032-3180		1.6 SIMPLEX							
106032-0980	RED	RED	2.0 & 1.6 DUPLEX	106032-3070	3							
106032-0180			1.6 SIMPLEX	106032-3970	2.0 & 1.6 DUPLEX							
106032-0070			3	106032-3170	1.6 SIMPLEX							
106032-0970			2.0 & 1.6 DUPLEX									
106032-0170			1.6 SIMPLEX									
106032-2000	125.5	YELLOW	SINGLE MODE	3								
106032-2900				2.0 & 1.6 DUPLEX								
106032-2100				1.6 SIMPLEX	BLUE							
106032-2050				3								
106032-2950				2.0 & 1.6 DUPLEX		WHITE						
106032-2150				1.6 SIMPLEX								
106032-2080		3										
106032-2980		2.0 & 1.6 DUPLEX										
106032-2180		1.6 SIMPLEX		RED								
106032-2070		3										
106032-2970		2.0 & 1.6 DUPLEX			BLACK							
106032-2170		1.6 SIMPLEX										

ENTER DESCRIPTION EC NO: MF2007-0445 DRAWN BY: DRINKWELTZNER CHKD: 2007/01/12 APPR: GUMIN 2007/01/15	QUALITY SYMBOLS ▽=0 ▽=0	GENERAL TOLERANCES (UNLESS SPECIFIED)		DIMENSION STYLE	SCALE	DESIGN UNITS	THIRD ANGLE PROJECTION
		mm	INCH	IN/MM	4:1	INCH	
		DRAWN BY: RPACIFIC1		DATE: 2005/12/22	TITLE: SC CONNECTOR (TUNABLE)		
		CHECKED BY:		DATE:			
APPROVED BY:		DATE:	MATERIAL NO. SEE TABLE				
DRAFT WHERE APPLICABLE MUST REMAIN WITHIN DIMENSIONS		SIZE B		DOCUMENT NO. SD-106032-XXX0		SHEET NO. 2 OF 3	
THIS DRAWING CONTAINS INFORMATION THAT IS PROPRIETARY TO MOLEX INCORPORATED AND SHOULD NOT BE USED WITHOUT WRITTEN PERMISSION							

10	9	8	7	6	5	4	3	2	106032						
CONNECTOR P/N	Ø (mm)	BOOT COLOR	HOUSING COLOR	CONNECTOR TYPE	CABLE (mm)	CONNECTOR P/N	Ø (mm)	BOOT COLOR	HOUSING COLOR	CONNECTOR TYPE	CABLE (mm)				
106032-4000	125	YELLOW	BLUE	SINGLE MODE	3	106032-6000	125.5	YELLOW	BLUE	SINGLE MODE	3				
106032-4900					2.0 & 1.6 DUPLEX	106032-6900					2.0 & 1.6 DUPLEX				
106032-4100					1.6 SIMPLEX	106032-6100					1.6 SIMPLEX				
106032-4050					3	106032-7000					3				
106032-4950					2.0 & 1.6 DUPLEX	106032-7900					2.0 & 1.6 DUPLEX				
106032-4150		1.6 SIMPLEX			106032-7100	1.6 SIMPLEX									
106032-4080		3			106032-7050	3									
106032-4980		2.0 & 1.6 DUPLEX			106032-7950	2.0 & 1.6 DUPLEX									
106032-4180		1.6 SIMPLEX			106032-7150	1.6 SIMPLEX									
106032-4070		3			106032-7080	3									
106032-4970	126	BLACK	BLACK	SINGLE MODE	2.0 & 1.6 DUPLEX	106032-7980	127	WHITE	RED	SINGLE MODE	2.0 & 1.6 DUPLEX				
106032-4170					1.6 SIMPLEX	106032-7180					1.6 SIMPLEX				
106032-5000					3	106032-7070					3				
106032-5020*					2.4	106032-7970					2.0 & 1.6 DUPLEX				
106032-5300					1.6 SIMPLEX	106032-7170					1.6 SIMPLEX				
106032-5310*		2.0 & 1.6 DUPLEX													
106032-5900		1.6 SIMPLEX													
106032-5990*		3													
106032-5100		2.0 & 1.6 DUPLEX													
106032-5050		1.6 SIMPLEX													
106032-5950	WHITE	RED	RED	SINGLE MODE	3										
106032-5150					2.0 & 1.6 DUPLEX										
106032-5080					1.6 SIMPLEX										
106032-5980					3										
106032-5180					2.0 & 1.6 DUPLEX										
106032-5070	BLACK				BLACK	BLACK	SINGLE MODE	1.6 SIMPLEX							
106032-5970								2.0 & 1.6 DUPLEX							
106032-5170								1.6 SIMPLEX							

ENTER DESCRIPTION EC NO: MF2007-0445 DRAWN: REIZNER CHKD: GUMIN APPR: GUMIN B1	QUALITY SYMBOLS ▽=0 ▽=0	GENERAL TOLERANCES (UNLESS SPECIFIED)		DIMENSION STYLE	SCALE	DESIGN UNITS	THIRD ANGLE PROJECTION	
		mm	INCH	IN/MM	4:1	INCH		
		4 PLACES ± --- ± ---		DRAWN BY	DATE	TITLE		
		3 PLACES ± --- ± ---		RPACIFIC1	2005/12/22	SC CONNECTOR (TUNABLE)		
2 PLACES ± --- ± ---		CHECKED BY	DATE	APPROVED BY				
1 PLACE ± --- ± ---		APPROVED BY	DATE	MATERIAL NO.				
ANGULAR ±1/2°		DRAFT WHERE APPLICABLE MUST REMAIN WITHIN DIMENSIONS		SEE TABLE		DOCUMENT NO.		
				SD-106032-XXX0		SHEET NO.		
				THIS DRAWING CONTAINS INFORMATION THAT IS PROPRIETARY TO MOLEX INCORPORATED AND SHOULD NOT BE USED WITHOUT WRITTEN PERMISSION		3 OF 03		