

## Excellent Integrated System Limited

Stocking Distributor

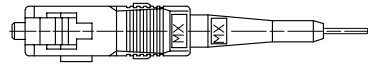
Click to view price, real time Inventory, Delivery & Lifecycle Information:

[Molex Connector Corporation](#)  
[1060635500](#)

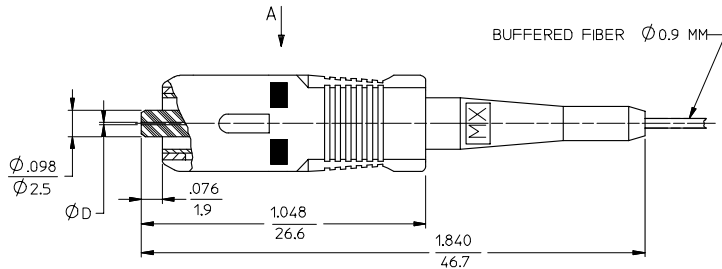
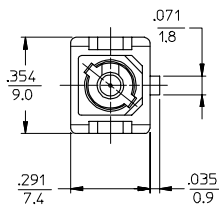
For any questions, you can email us directly:

[sales@integrated-circuit.com](mailto:sales@integrated-circuit.com)

CONNECTOR P/N	Ø (In)	FERRULE MATERIAL	BOOT COLOR	HOUSING COLOR	CONNECTOR TYPE
106063-0500	127	Zr	BLUE	BLUE	MULTIMODE
106063-0520			BEIGE	BEIGE	
106063-0560			BLACK	BLACK	
106063-0590			RED	RED	
106063-0580			RED	RED	
106063-2510	125.5	Zr	YELLOW	BLUE	SINGLE MODE
106063-2500			BLACK	BLACK	
106063-2570			RED	RED	
106063-2580	128	Zr	BLUE	BLUE	MULTIMODE
106063-3500			BEIGE	BEIGE	
106063-3560			BLACK	BLACK	
106063-3570	125	Zr	RED	RED	SINGLE MODE
106063-3580			YELLOW	BLUE	
106063-4500			BLACK	BLACK	
106063-4510	126	Zr	RED	RED	SINGLE MODE
106063-5500			YELLOW	BLUE	
106063-5590			BLACK	BLACK	
106063-5570	127	Zr	RED	RED	SINGLE MODE
106063-5580			YELLOW	BLUE	
106063-7500			BEIGE	BEIGE	
106063-3540	128	Zr	BEIGE	BEIGE	MULTIMODE



VIEW A  
SCALE 2.5:1



NOTES:

1. ALL DIMENSIONS ARE FOR REFERENCE ONLY.

\*2. P/N 106063-0590, P/N 106063-5590, P/N 106063-3540 AND P/N 106063-0520 ARE BULK PACKED IN QUANTITIES OF 100PCS.

ENTER DESCRIPTION	QUALITY SYMBOLS	GENERAL TOLERANCES (UNLESS SPECIFIED)	DIMENSION STYLE	SCALE	DESIGN UNITS	THIRD ANGLE PROJECTION
EC NO: MF2006-0424	▽=0	4 PLACES ± --- ± ---	INCH ONLY	4:1	INCH	
DRW/PACIFIC I	▽=0	3 PLACES ± --- ± ---	DRAWN BY DATE			
CHKD: 2006/07/24		2 PLACES ± --- ± ---	PACIFIC I 2005/12/22			SC BARE FIBER CONNECTOR
APPR: IGM/IN 2006/07/24		1 PLACE ± --- ± ---	CHECKED BY DATE			
DESCRIPTION		ANGULAR ±1/2°	APPROVED BY DATE			
REV		DRAFT WHERE APPLICABLE MUST REMAIN WITHIN DIMENSIONS	MATERIAL NO.	DOCUMENT NO.		
			SEE TABLE	SD-106063-X5X0		
			SIZE C	THIS DRAWING CONTAINS INFORMATION THAT IS PROPRIETARY TO MOLEX INCORPORATED AND SHOULD NOT BE USED WITHOUT WRITTEN PERMISSION		