

## Excellent Integrated System Limited

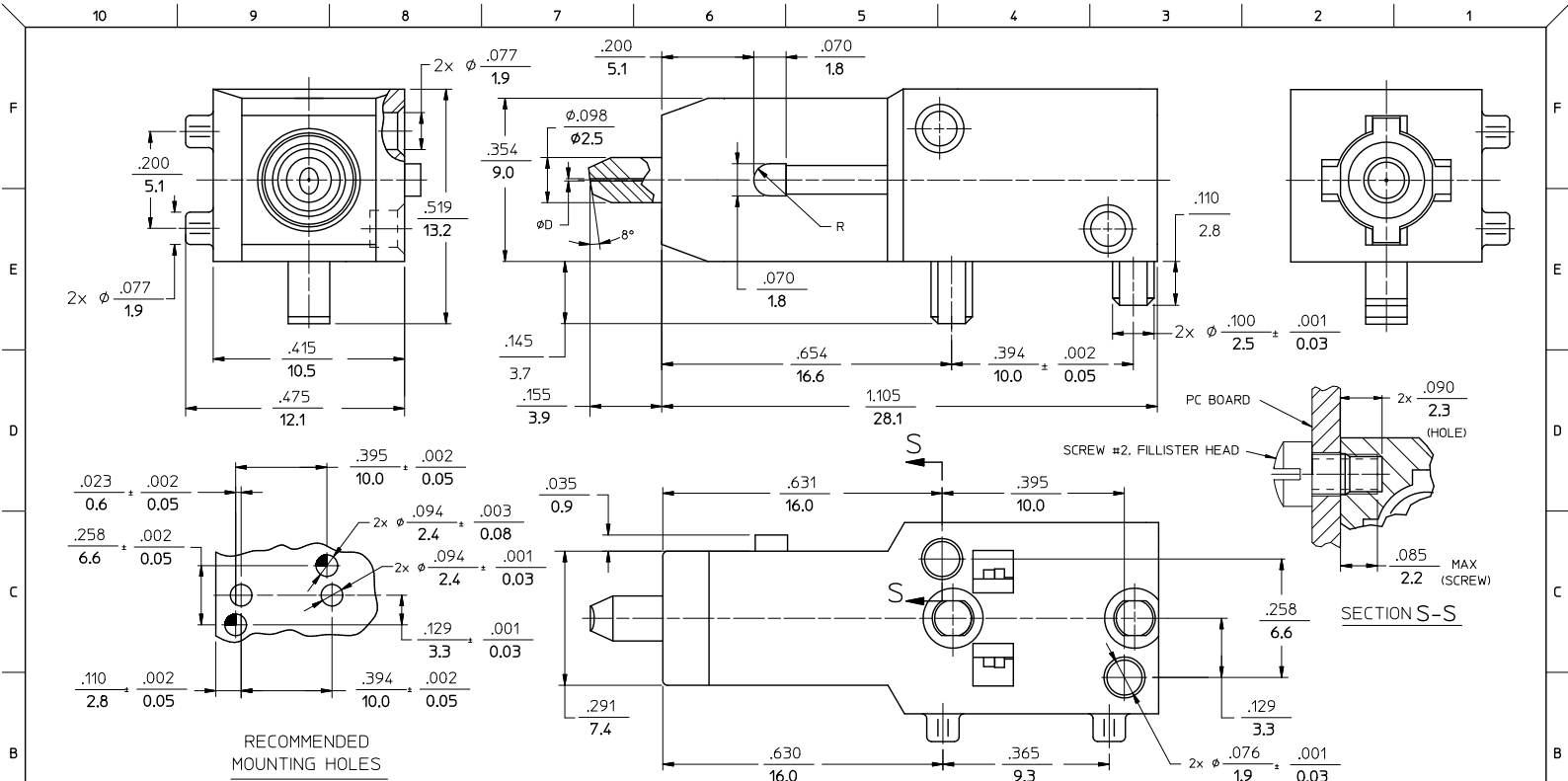
Stocking Distributor

Click to view price, real time Inventory, Delivery & Lifecycle Information:

[Molex Connector Corporation](#)  
[1060765000](#)

For any questions, you can email us directly:

[sales@integrated-circuit.com](mailto:sales@integrated-circuit.com)



RECOMMENDED MOUNTING HOLES  
SCALE: 2.5:1

NOTES:

1. ALL DIMENSIONS ARE FOR REFERENCE ONLY.
2. ACTUAL PARTS TO BE PACKAGED AS A KIT (LOOSE COMPONENTS).

CONNECTOR P/N	ØD (4m)
106076-2300	125.50 <sup>+0.5</sup> / <sub>0</sub>
106076-4300	125.00 <sup>+0.5</sup> / <sub>0</sub>
106076-4400	125.25 <sup>+0.5</sup> / <sub>0</sub>
106076-5000	126.00 <sup>+1.0</sup> / <sub>0</sub>

<b>ENTER DESCRIPTION</b> ELC NO: ME2011-0026 DRAWN BY: BRANKOVICZNER CHKD: APPREBANDREI DATE: 2010/07/21 DATE: 2010/07/23	<b>QUALITY SYMBOLS</b> ▽=0 ▽=0	<b>GENERAL TOLERANCES (UNLESS SPECIFIED)</b>		<b>DIMENSION STYLE</b> IN/MM		<b>SCALE</b> 5:1	<b>DESIGN UNITS</b> INCH	THIRD ANGLE PROJECTION	
		4 PLACES ±	---	---	DRAWN BY: PGIBLIN DATE: 2005/10/27	<b>TITLE</b> BSC-2 APC CONNECTOR			
		3 PLACES ±	---	---	CHECKED BY:	<b>MOLEX INCORPORATED</b>			
		2 PLACES ±	---	---	APPROVED BY: BANDREI DATE: 2010/07/21	DOCUMENT NO: SD-106076-XX00			
1 PLACE ±	---	---	MATERIAL NO:	SEE TABLE		SHEET NO: 1 OF 01		DRAFT WHERE APPLICABLE MUST REMAIN WITHIN DIMENSIONS	
SIZE B THIS DRAWING CONTAINS INFORMATION THAT IS PROPRIETARY TO MOLEX INCORPORATED AND SHOULD NOT BE USED WITHOUT WRITTEN PERMISSION									