

Excellent Integrated System Limited

Stocking Distributor

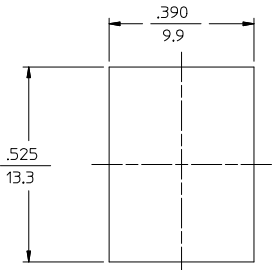
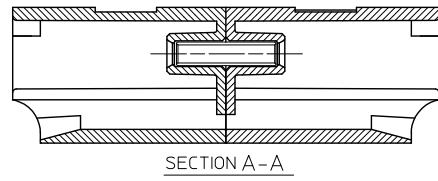
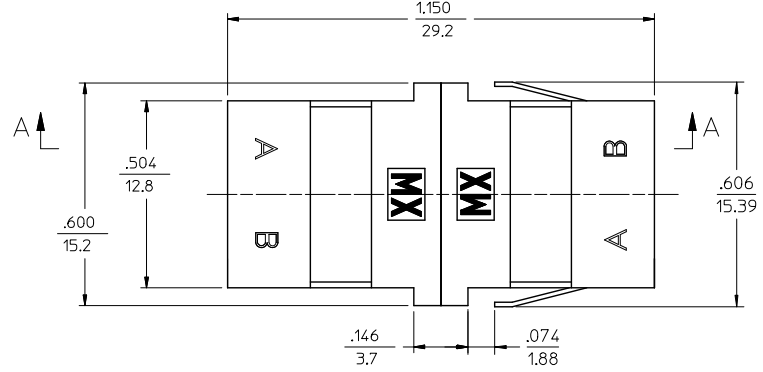
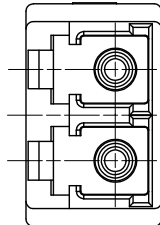
Click to view price, real time Inventory, Delivery & Lifecycle Information:

[Molex Connector Corporation](#)
[1061260410](#)

For any questions, you can email us directly:

sales@integrated-circuit.com

10	9	8	7	6	5	4	3	2	106126
LC ADAPTER ASSY, P/N	ADAPTER COLOR	SPLIT SLEEVE MATERIAL	DUST CAP COLOR						
106126-0410	BEIGE	Ph. Bronze	WHITE						
106126-0510	BLUE								
106126-1400									
106126-1415*									
106126-1415**									
106126-1450	GREEN	Zr	INDIGO BLUE (ANTI-STATIC)						
106126-1460	BLUE								
106126-1410	BLACK								
106126-1420	BEIGE								
106126-1430	AQUA								
106126-3410	BLACK				WHITE				



RECOMMENDED MOUNTING CUTOUT FOR $\frac{.063}{1.6}$ THICK PANEL

- NOTES:
1. ALL DIMENSIONS ARE FOR REFERENCE ONLY.
 2. ASSEMBLED DUST CAP NOT SHOWN.
 - *3. P/N 106126-1415 IS BULK PACKED IN QUANTITIES OF 100 PCS.
 - **4. P/N 106126-1416 IS BULK PACKED AS FOLLOWS: 500 pcs. OF ADAPTERS PER BAG.

ENTER DESCRIPTION EC NO: MF2014-0196 DRAWN: GUMIN CHKD: GUMIN APPR: GUMIN 2013/10/02 2013/10/10	QUALITY SYMBOLS $\nabla=0$ $\nabla=0$	GENERAL TOLERANCES (UNLESS SPECIFIED)		DIMENSION STYLE IN/MM		SCALE 1:1	DESIGN UNITS INCH	THIRD ANGLE PROJECTION
		4 PLACES ± --- ± --- 3 PLACES ± --- ± --- 2 PLACES ± --- ± --- 1 PLACE ± --- ± --- 0 PLACE ± --- ± ---	mm INCH ± .005 ± .0005 ± .005 ± .0005 ± .005 ± .0005 ± .005 ± .0005 ± .005 ± .0005	DRAWN BY PGIBLIN	DATE 2005/10/05	TITLE LC DUPLEX ADAPTER (SMALL FLANGE/SC FOOT PRINT)		
		ANGULAR ±1/2° DRAFT WHERE APPLICABLE MUST REMAIN WITHIN DIMENSIONS		MATERIAL NO. SEE TABLE		DOCUMENT NO. SD-106126-X4X0		SHEET NO. 1 OF 1

THIS DRAWING CONTAINS INFORMATION THAT IS PROPRIETARY TO MOLEX INCORPORATED AND SHOULD NOT BE USED WITHOUT WRITTEN PERMISSION