

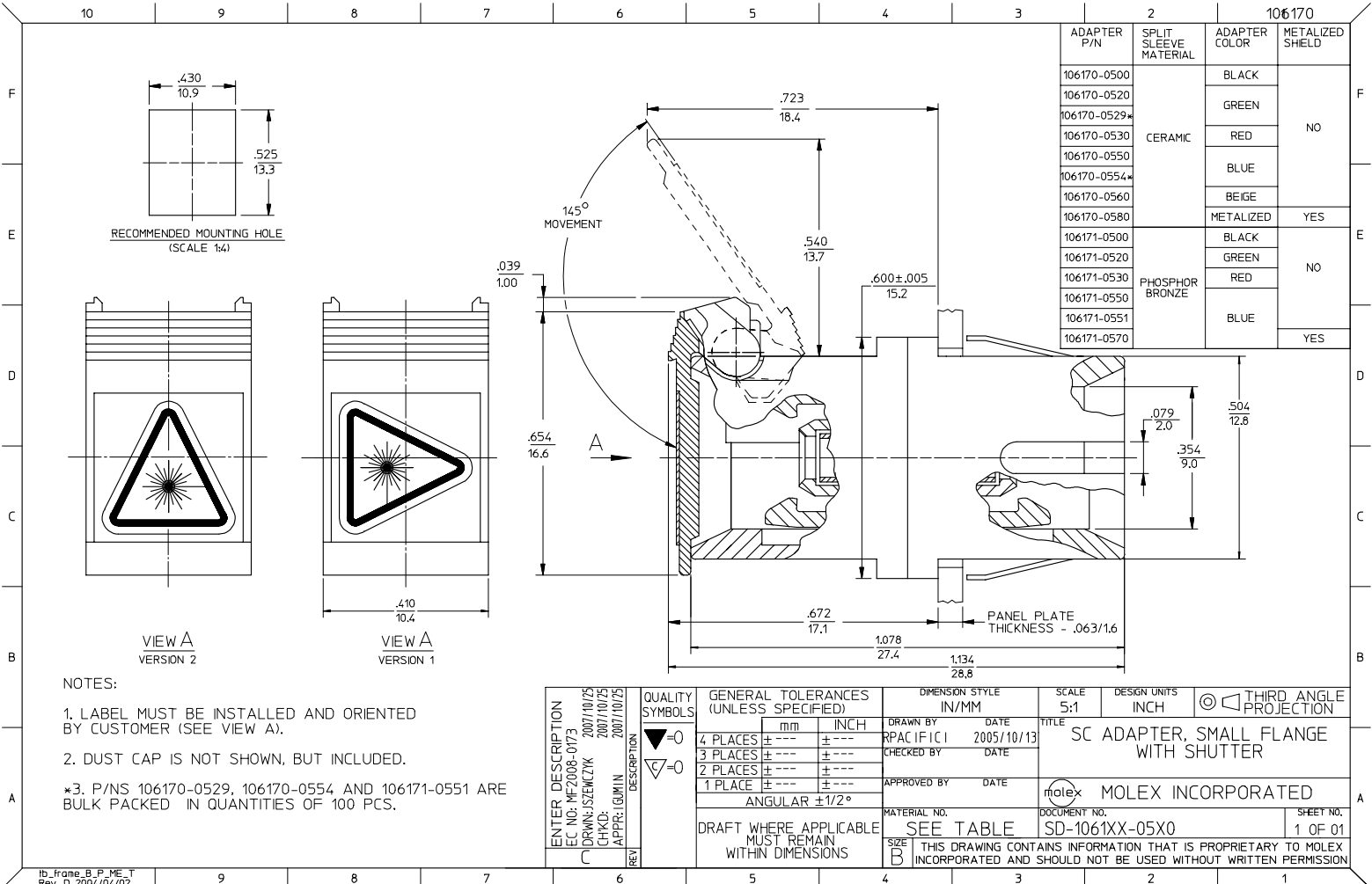
Excellent Integrated System Limited

Stocking Distributor

Click to view price, real time Inventory, Delivery & Lifecycle Information:

[Molex Connector Corporation](#)
[1061700550](#)

For any questions, you can email us directly:
sales@integrated-circuit.com



106170			
ADAPTER P/N	SPLIT SLEEVE MATERIAL	ADAPTER COLOR	METALIZED SHIELD
106170-0500	CERAMIC	BLACK	NO
106170-0520		GREEN	
106170-0529*		RED	
106170-0530		BLUE	
106170-0550		BEGE	
106170-0554*		METALIZED	
106171-0500	PHOSPHOR BRONZE	BLACK	NO
106171-0520		GREEN	
106171-0530		RED	
106171-0550		BLUE	
106171-0551			

- NOTES:
- LABEL MUST BE INSTALLED AND ORIENTED BY CUSTOMER (SEE VIEW A).
 - DUST CAP IS NOT SHOWN, BUT INCLUDED.
 - *3. P/N/S 106170-0529, 106170-0554 AND 106171-0551 ARE BULK PACKED IN QUANTITIES OF 100 PCS.

ENTER DESCRIPTION EC NO: ME2008-0773 DRAWN: SJZEMCZYK CHKD: LUMIN APPR: LUMIN 2007/10/25 2007/10/25 2007/10/25	QUALITY SYMBOLS ▽=0 ▽=0	GENERAL TOLERANCES (UNLESS SPECIFIED)		DIMENSION STYLE	SCALE	DESIGN UNITS	THIRD ANGLE PROJECTION	
				IN/MM	5:1	INCH		
		4 PLACES ±--- ±--- 3 PLACES ±--- ±--- 2 PLACES ±--- ±--- 1 PLACE ±--- ±---		DRAWN BY	DATE	TITLE		
		ANGULAR ±1/2°		RPACIFIC1	2005/10/13	SC ADAPTER, SMALL FLANGE WITH SHUTTER		
DRAFT WHERE APPLICABLE MUST REMAIN WITHIN DIMENSIONS		CHECKED BY APPROVED BY		DATE	MOLEX INCORPORATED DOCUMENT NO. SD-1061XX-05X0 SHEET NO. 1 OF 01			
		MATERIAL NO. SEE TABLE		THIS DRAWING CONTAINS INFORMATION THAT IS PROPRIETARY TO MOLEX INCORPORATED AND SHOULD NOT BE USED WITHOUT WRITTEN PERMISSION				