

## Excellent Integrated System Limited

Stocking Distributor

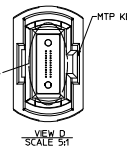
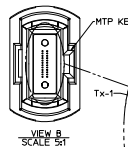
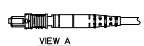
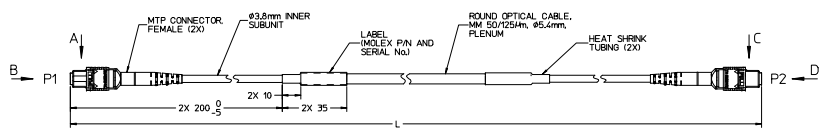
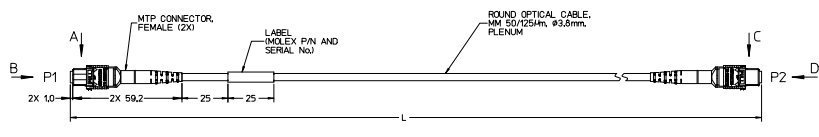
Click to view price, real time Inventory, Delivery & Lifecycle Information:

[Molex Connector Corporation](#)  
[1062840015](#)

For any questions, you can email us directly:

[sales@integrated-circuit.com](mailto:sales@integrated-circuit.com)

| CXP CABLE ASSEMBLY PART NUMBER | OVERALL LENGTH L (mm) | CABLE DIA. (mm) | CABLE TYPE                          |   |
|--------------------------------|-----------------------|-----------------|-------------------------------------|---|
|                                |                       |                 |                                     | STANDARD BANDWIDTH (OM2) (ORANGE CABLE) |
| 106284-0001                    | 10 ±0.2/-0            |                 | 2x FIBER ROUND CABLE, SINGLE JACKET |   |
| 106284-0051                    | TBD                   | TBD             |                                     |   |
| 106284-0002                    | 106284-1002           | 106284-7002     |                                     | 2.0 ±0.2/-0                             |
| 106284-0003                    | 106284-1003           | 106284-7003     |                                     | 3.0 ±0.2/-0                             |
| 106284-0004                    | 106284-1004           | 106284-7004     |                                     | 4.0 ±0.2/-0                             |
| 106284-0005                    | 106284-1005           | 106284-7005     |                                     | 5.0 ±0.2/-0                             |
| 106284-0006                    | 106284-1006           | 106284-7006     |                                     | 6.0 ±0.2/-0                             |
| 106284-0008                    | 106284-1008           | 106284-7008     |                                     | 8.0 ±0.2/-0                             |
| 106284-0010                    | 106284-1010           | 106284-7010     |                                     | 10.0 ±0.3/-0                            |
| 106284-0012                    | 106284-1012           | 106284-7012     |                                     | 12.0 ±0.3/-0                            |
| 106284-0015                    | 106284-1015           | 106284-7015     | 15.0 ±0.3/-0                        |   |
| 106284-0020                    | 106284-1020           | 106284-7020     | 20.0 ±0.4/-0                        |   |
| 106284-0025                    | 106284-1025           | 106284-7025     | 25.0 ±0.5/-0                        |   |
| 106284-0030                    | 106284-1030           | 106284-7030     | 30.0 ±0.6/-0                        |   |
| 106284-0035                    | 106284-1035           | 106284-7035     | 35.0 ±0.7/-0                        |   |
| 106284-0040                    | 106284-1040           | 106284-7040     | 40.0 ±0.8/-0                        |   |
| 106284-0045                    | 106284-1045           | 106284-7045     | 45.0 ±0.9/-0                        |   |
| 106284-0050                    | 106284-1050           | 106284-7050     | 50.0 ±1.0/-0                        |   |
| 106284-0055                    | 106284-1055           | 106284-7055     | 55.0 ±1.1/-0                        |   |
| 106284-0060                    | 106284-1060           | 106284-7060     | 60.0 ±1.2/-0                        |   |
| 106284-0065                    | 106284-1065           | 106284-7065     | 65.0 ±1.3/-0                        |   |
| 106284-0070                    | 106284-1070           | 106284-7070     | 70.0 ±1.4/-0                        |   |
| 106284-0075                    | 106284-1075           | 106284-7075     | 75.0 ±1.5/-0                        |   |
| 106284-0080                    | 106284-1080           | 106284-7080     | 80.0 ±1.6/-0                        |   |
| 106284-0085                    | 106284-1085           | 106284-7085     | 85.0 ±1.7/-0                        |   |
| 106284-0090                    | 106284-1090           | 106284-7090     | 90.0 ±1.8/-0                        |   |
| 106284-0095                    | 106284-1095           | 106284-7095     | 95.0 ±1.9/-0                        |   |
| 106284-0100                    | 106284-1100           | 106284-7100     | 100.0 ±2.0/-0                       |   |
| 106284-0150                    | 106284-1150           | 106284-7150     | 150.0 ±3.0/-0                       |   |
| TBD                            | TBD                   | 106284-7200     | 200.0 ±4.0/-0                       |   |
| TBD                            | TBD                   | 106284-7250     | 250.0 ±5.0/-0                       |   |
| TBD                            | TBD                   | 106284-7300     | 300.0 ±6.0/-0                       |   |



| FROM P1 TO P2 | CONNECTIONS |
|---------------|-------------|
| 1             | Rc-1 Tx-1   |
| 2             | Rc-2 Tx-2   |
| 3             | Rc-3 Tx-3   |
| 4             | Rc-4 Tx-4   |
| 5             | Rc-5 Tx-5   |
| 6             | Rc-6 Tx-6   |
| 7             | Rc-7 Tx-7   |
| 8             | Rc-8 Tx-8   |
| 9             | Rc-9 Tx-9   |
| 10            | Rc-10 Tx-10 |
| 11            | Rc-11 Tx-11 |
| 12            | Rc-12 Tx-12 |
| 13            | Rc-1 Rc-2   |
| 14            | Rc-3 Rc-4   |
| 15            | Rc-5 Rc-6   |
| 16            | Rc-7 Rc-8   |
| 17            | Rc-9 Rc-10  |
| 18            | Rc-11 Rc-12 |
| 19            | Rc-1 Rc-2   |
| 20            | Rc-3 Rc-4   |

NOTE:  
 CABLE ASSEMBLY SPECIFICATIONS:  
 OPTICAL PROPERTIES  
 FIBER TYPE MULTIMODE 50/125 4th BEND-INSENSITIVE  
 CONNECTOR INSERTION LOSS (MAX) 1.0 dB  
 CABLE ATTENUATION (MAX) 3.5/1.2 dB/km AT 850/1300 nm  
 BANDWIDTH SEE TABLE 1  
 ENVIRONMENTAL PROPERTIES  
 CONNECTOR MATERIALS UL94 V-0  
 CABLE FLAMMABILITY RATING PLENUM OFNP (NFPA 262/UL 910)  
 OPERATING TEMPERATURE RANGE -0°C TO +70°C  
 MECHANICAL PROPERTIES  
 FIBER COUNT 24F - 12 Rx / 12 Tx  
 CABLE MIN. BEND RADIUS  
 SHORT TERM 57 mm - SINGLE JACKET  
 89 mm - DUAL JACKET  
 LONG TERM 20 mm - SINGLE JACKET/INNER SUBUNIT OF DUAL JACKETED CABLE  
 57 mm - DUAL JACKET  
 NO LOAD 12.5 mm - SINGLE JACKET CABLE/INNER SUBUNIT OF DUAL JACKETED CABLE  
 COMPRESSIVE FORCE >3.5 N/mm - SINGLE JACKET CABLE/INNER SUBUNIT OF DUAL JACKETED CABLE

TABLE 1

| FIBER TYPE               | OVERFILLED LAUNCH BANDWIDTH, MIN. (MHz-km) |         | 1 GIGABIT ETHERNET LINK DISTANCE, MIN. (m) |         | 10 GIGABIT ETHERNET LINK DISTANCE, MIN. (m) |         | 40 & 100 GIGABIT ETHERNET LINK DISTANCE, MIN. (m) |         | EFFECTIVE MODAL BANDWIDTH (MHz-km) |
|--------------------------|--|---------|--|---------|---|---------|---|---------|------------------------------------|
|                          | 850 nm                                     | 1300 nm | 850 nm                                     | 1300 nm | 850 nm                                      | 1300 nm | 850 nm  | 1300 nm |                                    |
| STANDARD BANDWIDTH (OM2) | 500  | 500     | 600  | ---     | 86  | ---     | ---   | ---     | ---                                |
| HIGH BANDWIDTH (OM3)     | 1500                                       | 500     | 1000                                       | ---     | 300   | ---     | 100   | ---     | 2000                               |
| HIGH BANDWIDTH (OM4)     | 3500                                       | 550     | 1040                                       | ---     | 550   | ---     | 50  | ---     | 4700                               |

|  |                 |                                       |                 |                |                                  |              |                        |
|--|-----------------|---------------------------------------|-----------------|----------------|----------------------------------|--------------|------------------------|
| ENTER DESCRIPTION<br>EC NO. M2015-0471<br>DRAWN:IGUMIN<br>CHECK:IGUMIN<br>APPROVED:IGUMIN<br>DATE:2015/07/13                         | QUALITY SYMBOLS | GENERAL TOLERANCES (UNLESS SPECIFIED) | DIMENSION STYLE |                | SCALE                            | DESIGN UNITS | THIRD ANGLE PROJECTION |
|  | ▽=0             | mm INCH                               | MM ONLY         |                | 1:1                              | INCH         |                        |
|  | 4 PLACES ±---   | mm INCH                               | DRAWN BY        | DATE           | TITLE                            |              |                        |
|  | 3 PLACES ±---   | mm INCH                               | IGUMIN          | 2008/11/21     | MOLEX CXP OPTICAL CABLE ASSEMBLY |              |                        |
| 2 PLACES ±---  | mm INCH         | CHECKED BY                            | DATE            |                |                                  |              |                        |
| 1 PLACE ±---   | mm INCH         | APPROVED BY                           | DATE            |                |                                  |              |                        |
| 0 PLACE ±---   | mm INCH         | IGUMIN                                | 2008/11/21      |                |                                  |              |                        |
| DRAFT WHERE APPLICABLE MUST REMAIN WITHIN DIMENSIONS   |                 | ANGULAR ±1/2°                         | SEE TABLE       |                | DOCUMENT NO.                     | SHEET NO.    |                        |
| SIZE D THIS DRAWING CONTAINS INFORMATION THAT IS PROPRIETARY TO MOLEX INCORPORATED AND SHOULD NOT BE USED WITHOUT WRITTEN PERMISSION |                 |                                       |                 | SD-106284-0001 |                                  | 1 OF 1       |                        |