



Distributor of Molex Connector Corporation: Excellent Integrated System Limited
Datasheet of 5023860372 - Connector Receptacle 3 Position 0.049" (1.25mm) Tin Surface
Mount, Right Angle

Contact us: sales@integrated-circuit.com Website: www.integrated-circuit.com

Excellent Integrated System Limited

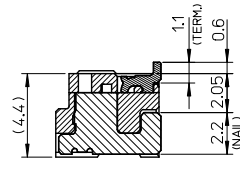
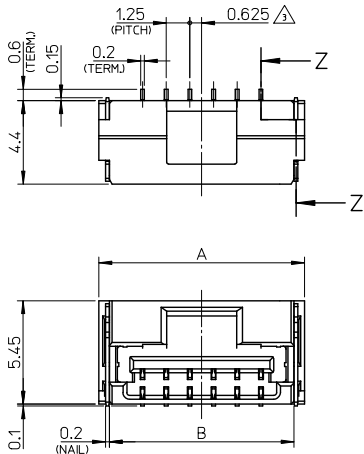
Stocking Distributor

Click to view price, real time Inventory, Delivery & Lifecycle Information:

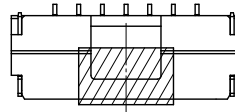
[Molex Connector Corporation](#)
[5023860372](#)

For any questions, you can email us directly:
sales@integrated-circuit.com

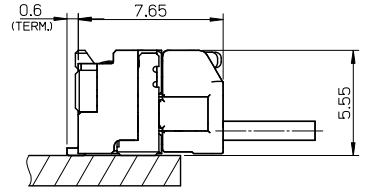
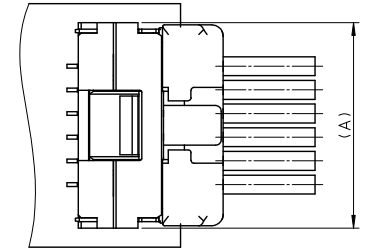
Contact us: sales@integrated-circuit.com Website: www.integrated-circuit.com



SECTION Z-Z



カプトンテープ付き
WITH KAPTON TAPE



嵌合図
MATED CONNECTORS

NOTES

- 嵌合相手: 502380-****
MATE WITH: 502380-****
- 端子テール部 及び ネイルの平坦度: 0.1MAX,
TAIL AND NAIL COPLANARITY TO BE 0.1 MAX.
- 極数/2=偶数に適用。
APPLY FOR CKT. SIZE / 2 = EVEN.
- 端子テール部 及び ネイルに錫めっきを使用しているため、
外観に摺動痕が付く場合があります。
THE WOUND OF FRICTION MIGHT ADHERE TO EXTERNALS
BECAUSE THE TIN PLATING IS USED FOR THE TAIL AND NAIL.
- 本製品のプラスチック部に黒点等が確認される場合や
色合いが異なる場合がありますが、製品性能に影響はありません。
THERE IS NO INFLUENCE IN THE PRODUCT PERFORMANCE THOUGH
THE BLACK SPOT ETC. MIGHT BE CONFIRMED TO THE PLASTIC PART
OF THIS PRODUCT AND THE SHADE MIGHT BE DIFFERENT.
- ELV 及び RoHS 適合品
ELV AND RoHS COMPLIANT

3.4	7.5	11	12.1	502386-07**	7
3.4	6.25	9.75	10.85	502386-06**	6
3.4	5	8.5	9.6	502386-05**	5
3.4	3.75	7.25	8.35	502386-04**	4
2.6	2.5	6	7.1	502386-03**	3
2.2	1.25	4.75	5.85	502386-02**	2

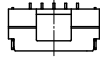
番号 NO.	部品 PART	材質 MATERIAL
①	ハウジング HOUSING	耐熱性樹脂 UL94V-0 色: SHEET 3 参照 HEATPROOF RESIN UL94V-0 COLOR: SEE SHEET 3
②	ターミナル TERMINAL	銅合金 COPPER ALLOY 錫めっき: 1.0 micro-meter MIN. TIN (TAIL AREA) ニッケルめっき(下地): 1.0 micro-meter MIN. NICKEL (UNDER PLATING)
③	ネイル NAIL	銅合金 COPPER ALLOY 錫めっき: 1.0 micro-meter MIN. TIN ニッケルめっき(下地): 1.0 micro-meter MIN. NICKEL (UNDER PLATING)

REVISED DEC NO. J2013-0870 T. MIYAZAKI 2013/02/07 CHIKIDAKAKAWA 2013/02/13 APPR: Y. ITO 2013/02/13	GENERAL TOLERANCES (UNLESS SPECIFIED)		DIMENSION STYLE MM ONLY		SCALE 5:1	DESIGN UNITS METRIC	THIRD ANGLE PROJECTION
	10 UNDER	± 0.2	DRAWN BY T. MIYAZAKI	DATE 2006/08/28	TITLE 1.25 W/B CONN. SINGLE R/A REC. ASS'Y 2-7CKT. molex DOCUMENT NO. SD-502386-001 SHEET NO. 1 OF 3		
	10 OVER 30 UNDER	± 0.25	CHECKED BY K. ASAKAWA	DATE 2006/08/28			
	30 OVER	± 0.3	APPROVED BY Y. ITO	DATE 2006/08/28			
ANGULAR ± 3 °		DRAFT WHERE APPLICABLE MUST REMAIN WITHIN DIMENSIONS		MATERIAL NO. SEE TABLE	THIS DRAWING CONTAINS INFORMATION THAT IS PROPRIETARY TO MOLEX INCORPORATED AND SHOULD NOT BE USED WITHOUT WRITTEN PERMISSION		

Contact us: sales@integrated-circuit.com Website: www.integrated-circuit.com



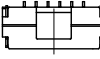
2 CKT.



5 CKT.



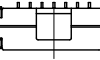
3 CKT.



6 CKT.

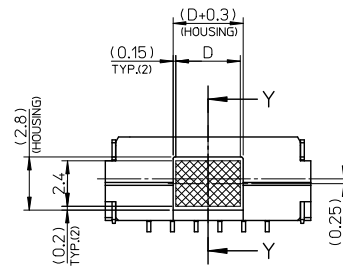


4 CKT.

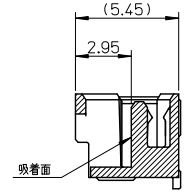


7 CKT.

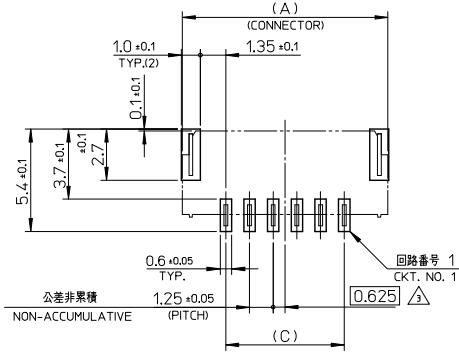
極数の種類
KIND OF CKT. NO.(FRONT VIEW)



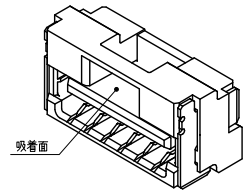
吸着範囲
VACUUM AREA



SECTION Y-Y



基板パターンレイアウト (参考)
RECOMMENDED P.C.B. PATTERN LAYOUT (REF.)



REVISED EC NO. J2013-0870 DRAWN BY T. DRUNKASHIO 2013/02/07 CHECKED BY CHIKIDAKAKAWA 2013/02/13 APPR. YO ITO 2013/02/13	GENERAL TOLERANCES (UNLESS SPECIFIED)		DIMENSION STYLE MM ONLY	SCALE 5:1	DESIGN UNITS METRIC	THIRD ANGLE PROJECTION
	10 UNDER	± 0.2	DRAWN BY DATE T. MIYAZAKI 2006/08/28	TITLE 1.25 W/B CONN. SINGLE R/A REC. ASS'Y 2-7CKT.		
	10 OVER 30 UNDER	± 0.25	CHECKED BY DATE K. ASAKAWA 2006/08/28			
	30 OVER	± 0.3	APPROVED BY DATE YO. ITO 2006/08/28			
ANGULAR	± 3 °	MATERIAL NO.	SEE TABLE	DOCUMENT NO. SD-502386-001	SHEET NO. 2 OF 3	
DRAFT WHERE APPLICABLE MUST REMAIN WITHIN DIMENSIONS		THIS DRAWING CONTAINS INFORMATION THAT IS PROPRIETARY TO MOLEX INCORPORATED AND SHOULD NOT BE USED WITHOUT WRITTEN PERMISSION				

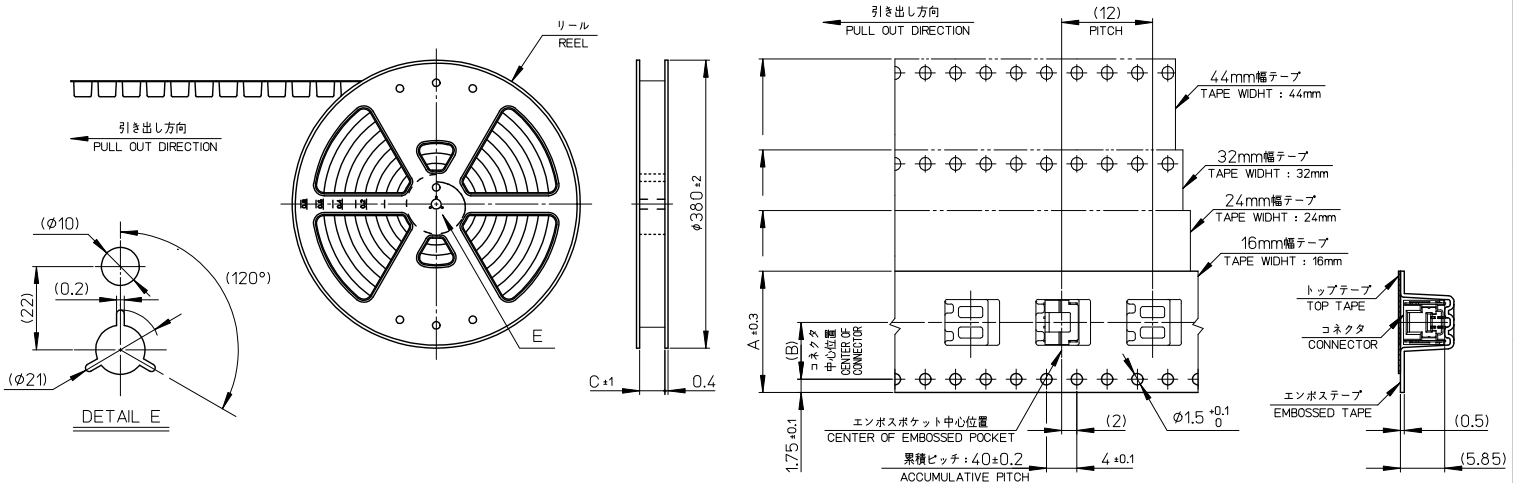
Contact us: sales@integrated-circuit.com Website: www.integrated-circuit.com

WITH CAPTON TAPE										
HSG COLOR : GREEN		HSG COLOR : BLUE		HSG COLOR : RED		HSG COLOR : BLACK		HSG COLOR : NATURAL		
502386-0736	502386-***16	502386-0734	502386-***14	502386-0732	502386-***12	502386-0731	502386-***11	502386-0772	502386-***08	7
502386-0636		502386-0634		502386-0632		502386-0631		502386-0672		6
502386-0536		502386-0534		502386-0532		502386-0531		502386-0572		5
502386-0436		502386-0434		502386-0432		502386-0431		502386-0472		4
502386-0336		502386-0334		502386-0332		502386-0331		502386-0372		3
502386-0236		502386-0234		502386-0232		502386-0231		502386-0272		2
EMBOSSED TAPE PACKAGE オーダー番号ORDER No.	コネクタ シリЭС CONNECTOR SERIES	EMBOSSED TAPE PACKAGE オーダー番号ORDER No.	コネクタ シリЭС CONNECTOR SERIES	EMBOSSED TAPE PACKAGE オーダー番号ORDER No.	コネクタ シリЭС CONNECTOR SERIES	EMBOSSED TAPE PACKAGE オーダー番号ORDER No.	コネクタ シリЭС CONNECTOR SERIES	EMBOSSED TAPE PACKAGE オーダー番号ORDER No.	コネクタ シリЭС CONNECTOR SERIES	極数 (EXT. NO.)

WITHOUT CAPTON TAPE										
HSG COLOR : GREEN		HSG COLOR : BLUE		HSG COLOR : RED		HSG COLOR : BLACK		HSG COLOR : NATURAL		
502386-0746	502386-***26	502386-0744	502386-***24	502386-0742	502386-***22	502386-0741	502386-***21	502386-0770	502386-***09	7
502386-0646		502386-0644		502386-0642		502386-0641		502386-0670		6
502386-0546		502386-0544		502386-0542		502386-0541		502386-0570		5
502386-0446		502386-0444		502386-0442		502386-0441		502386-0470		4
502386-0346		502386-0344		502386-0342		502386-0341		502386-0370		3
502386-0246		502386-0244		502386-0242		502386-0241		502386-0270		2
EMBOSSED TAPE PACKAGE オーダー番号ORDER No.	コネクタ シリЭС CONNECTOR SERIES	EMBOSSED TAPE PACKAGE オーダー番号ORDER No.	コネクタ シリЭС CONNECTOR SERIES	EMBOSSED TAPE PACKAGE オーダー番号ORDER No.	コネクタ シリЭС CONNECTOR SERIES	EMBOSSED TAPE PACKAGE オーダー番号ORDER No.	コネクタ シリЭС CONNECTOR SERIES	EMBOSSED TAPE PACKAGE オーダー番号ORDER No.	コネクタ シリЭС CONNECTOR SERIES	極数 (EXT. NO.)

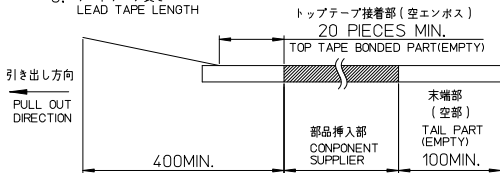
REVISED EC NO. J2013-0870 T1 DRW: NAWASHIO CHIKIDAKAKAWA APPR: Y. ITO REV	2013/02/07	DESCRIPTION GENERAL TOLERANCES (UNLESS SPECIFIED) 10 UNDER ±0.2 10 OVER 30 UNDER ±0.25 30 OVER ±0.3 ANGULAR ±3 ° DRAFT WHERE APPLICABLE MUST REMAIN WITHIN DIMENSIONS	2013/02/13	2013/02/13	DIMENSION STYLE MM ONLY DRAWN BY DATE T. MIYAZAKI 2006/08/28 CHECKED BY DATE K. ASAKAWA 2006/08/28 APPROVED BY DATE Y. ITO 2006/08/28	SCALE ----- DESIGN UNITS METRIC	THIRD ANGLE PROJECTION	TITLE 1.25 W/B CONN. SINGLE R/A REC. ASS'Y 2-7CKT.		MATERIAL NO. SEE TABLE	DOCUMENT NO. SD-502386-001	SHEET NO. 3 OF 3
	THIS DRAWING CONTAINS INFORMATION THAT IS PROPRIETARY TO MOLEX INCORPORATED AND SHOULD NOT BE USED WITHOUT WRITTEN PERMISSION											

Contact us: sales@integrated-circuit.com Website: www.integrated-circuit.com



NOTES

- 製品詳細寸法については、SD-502386-001, -002 を参照下さい。
PLEASE REFER TO SD-502386-001, -002 FOR THE DETAILED DIMENSION OF THE CONNECTOR.
- 梱包数量 : 1200個
NUMBER OF CONNECTORS : 1200 PIECES/REEL.
- リードテープ長さ
LEAD TAPE LENGTH



- 材料
MATERIAL
キャリアテープ : ポリスチレン
CARRIER TAPE : POLYSTYRENE
トップテープ : ポリエステル、ポリエチレン、ポリエチレンテレフタレート
TOP TAPE : POLYESTER, POLYETHYLENE, POLYETHYLENE TEREPHTHALATE
リール : ポリスチレン <リサイクル材を含む>
REEL : POLYSTYRENE <RECYCLE MATERIAL CONTAINED>
- ELV 及び RoHS 適合品
ELV AND RoHS COMPLIANT

エンボステープ幅 A WIDTH OF TAPE	エンボステープ幅 B WIDTH OF TAPE	エンボステープ幅 C WIDTH OF TAPE	製品番号 MATERIAL NO.	極数 (XT. NO.)
44.5	20.2	44	502386-15**	15
45.5	20.2	44	502386-14**	14
33.5	14.2	32	502386-13**	13
33.5	14.2	32	502386-12**	12
33.5	14.2	32	502386-11**	11
33.5	14.2	32	502386-10**	10
25.5	11.5	24	502386-09**	9
25.5	11.5	24	502386-08**	8
25.5	11.5	24	502386-07**	7
25.5	11.5	24	502386-06**	6
25.5	11.5	24	502386-05**	5
25.5	11.5	24	502386-04**	4
17.5	7.5	16	502386-03**	3
17.5	7.5	16	502386-02**	2

GENERAL TOLERANCES (UNLESS SPECIFIED)		DIMENSION STYLE		SCALE	DESIGN UNITS	THIRD ANGLE PROJECTION	
		MM ONLY		---	METRIC		
10 UNDER	± 0.2	DRAWN BY	DATE	TITLE 1.25 W/B CONN. SINGLE R/A REC. EMBTP PKG			
10 OVER 30 UNDER	± 0.25	T. MIYAZAKI	2006/10/16				
30 OVER	± 0.3	K. ASAKAWA	2006/10/16				
ANGULAR	$\pm 3^\circ$	APPROVED BY	DATE	DOCUMENT NO. SD-502386-003			
DRAFT WHERE APPLICABLE MUST REMAIN WITHIN DIMENSIONS		YO. ITO	2006/10/16				
		MATERIAL NO.	SEE TABLE	SHEET NO. 1 OF 2			
		THIS DRAWING CONTAINS INFORMATION THAT IS PROPRIETARY TO MOLEX INCORPORATED AND SHOULD NOT BE USED WITHOUT WRITTEN PERMISSION					

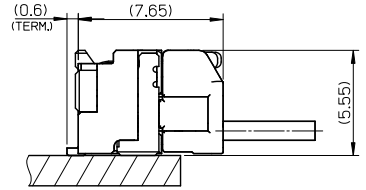
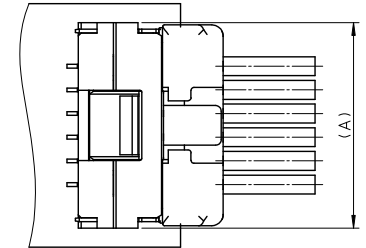
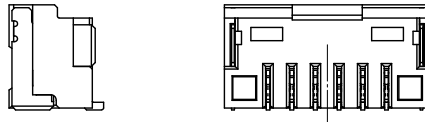
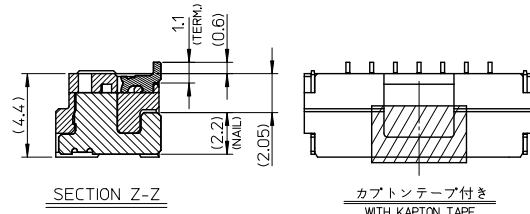
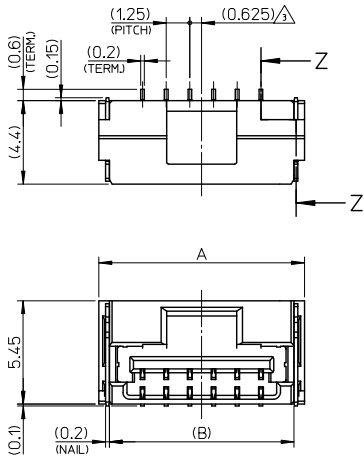
Contact us: sales@integrated-circuit.com Website: www.integrated-circuit.com

WITHOUT CAPTON TAPE			WITH CAPTON TAPE										
HSG COLOR : ORANGE			HSG COLOR : GREEN		HSG COLOR : BLUE		HSG COLOR : RED		HSG COLOR : BLACK		HSG COLOR : NATURAL		
502386-**28	---	15	---	---	---	---	---	---	---	---	---	15	
	---	14	---	---	---	---	---	---	---	---	---	14	
	---	13	---	---	---	---	---	---	---	---	---	13	
	---	12	---	---	---	---	---	---	---	---	---	12	
	---	11	---	---	---	---	---	---	---	---	---	11	
	---	10	---	---	---	---	---	---	---	---	---	10	
	502386-0948	9	---	---	---	---	---	---	---	---	---	9	
	---	8	---	---	---	---	---	---	---	---	---	8	
	---	7	---	---	---	---	---	---	---	---	---	7	
	---	6	---	---	---	---	---	---	---	---	---	6	
---	5	502386-0736	---	502386-0734	---	502386-0732	---	502386-0731	---	502386-0772	7		
---	4	502386-0636	---	502386-0634	---	502386-0632	---	502386-0631	---	502386-0672	6		
---	3	502386-0536	502386-**14	502386-0534	502386-**12	502386-0532	502386-**11	502386-0531	502386-**08	502386-0572	5		
---	2	502386-0436	---	502386-0434	---	502386-0432	---	502386-0431	---	502386-0472	4		
---	1	502386-0336	---	502386-0334	---	502386-0332	---	502386-0331	---	502386-0372	3		
---	0	502386-0236	---	502386-0234	---	502386-0232	---	502386-0231	---	502386-0272	2		
コネクタ シリーズ CONNECTOR SERIES	製品番号 MATERIAL NO.	極数 (XT. NO.)	コネクタ シリーズ CONNECTOR SERIES	製品番号 MATERIAL NO.	コネクタ シリーズ CONNECTOR SERIES	製品番号 MATERIAL NO.	コネクタ シリーズ CONNECTOR SERIES	製品番号 MATERIAL NO.	コネクタ シリーズ CONNECTOR SERIES	製品番号 MATERIAL NO.	コネクタ シリーズ CONNECTOR SERIES	製品番号 MATERIAL NO.	極数 (XT. NO.)

WITHOUT CAPTON TAPE												
HSG COLOR : GREEN		HSG COLOR : BLUE		HSG COLOR : YELLOW		HSG COLOR : RED		HSG COLOR : BLACK		HSG COLOR : NATURAL		
502386-**26	502386-1546	502386-**24	502386-1544	502386-**23	---	502386-**22	502386-1542	502386-**21	502386-1541	502386-**09	502386-1570	15
	502386-1446		502386-1444		---		502386-1442		502386-1441		502386-1470	14
	502386-1346		502386-1344		---		502386-1342		502386-1341		502386-1370	13
	502386-1246		502386-1244		---		502386-1242		502386-1241		502386-1270	12
	502386-1146		502386-1144		---		502386-1142		502386-1141		502386-1170	11
	502386-1046		502386-1044		---		502386-1042		502386-1041		502386-1070	10
	502386-0946		502386-0944		502386-0943		502386-0942		502386-0941		502386-0970	9
	502386-0846		502386-0844		---		502386-0842		502386-0841		502386-0870	8
	502386-0746		502386-0744		---		502386-0742		502386-0741		502386-0770	7
	502386-0646		502386-0644		---		502386-0642		502386-0641		502386-0670	6
	502386-0546		502386-0544		---		502386-0542		502386-0541		502386-0570	5
	502386-0446		502386-0444		---		502386-0442		502386-0441		502386-0470	4
	502386-0346		502386-0344		---		502386-0342		502386-0341		502386-0370	3
	502386-0246		502386-0244		---		502386-0242		502386-0241		502386-0270	2
	コネクタ シリーズ CONNECTOR SERIES		製品番号 MATERIAL NO.		コネクタ シリーズ CONNECTOR SERIES		製品番号 MATERIAL NO.		コネクタ シリーズ CONNECTOR SERIES		製品番号 MATERIAL NO.	コネクタ シリーズ CONNECTOR SERIES

REVISIONS 2013/02/07 T. MIYAZAKI 2013/02/13 CHIKIDAKAWA 2013/02/13 APPR: Y. ITO	GENERAL TOLERANCES (UNLESS SPECIFIED)		DIMENSION STYLE MM ONLY		SCALE ---	DESIGN UNITS METRIC	THIRD ANGLE PROJECTION
	10 UNDER	± 0.2	DRAWN BY T. MIYAZAKI	DATE 2006/10/16	TITLE 1.25 W/B CONN. SINGLE R/A REC. EMBTP PKG		
	10 OVER 30 UNDER	± 0.25	CHECKED BY K. ASAKAWA	DATE 2006/10/16			
	30 OVER	± 0.3	APPROVED BY Y. ITO	DATE 2006/10/16			
	ANGULAR ± 3 °		DRAFT WHERE APPLICABLE MUST REMAIN WITHIN DIMENSIONS		MATERIAL NO. SEE TABLE	DOCUMENT NO. SD-502386-003	SHEET NO. 2 OF 2

Contact us: sales@integrated-circuit.com Website: www.integrated-circuit.com



NOTES

- 嵌合相手: 502380-****
MATE WITH: 502380-****
- 端子テール部 及び ネイルの平坦度: 0.1MAX,
TAIL AND NAIL COPLANARITY TO BE 0.1 MAX.
- 極数/2=偶数に適用。
APPLY FOR CKT. SIZE / 2 = EVEN.
- 端子テール部 及び ネイルに錫めっきを使用しているため、
外観に摺動痕が付く場合が御座います。
THE WOUND OF FRICTION MIGHT ADHERE TO EXTERNALS
BECAUSE THE TIN PLATING IS USED FOR THE TAIL AND NAIL.
- 本製品のプラスチック部に黒点等が確認される場合や
色合いが異なる場合がありますが、製品性能に影響はありません。
THERE IS NO INFLUENCE IN THE PRODUCT PERFORMANCE THOUGH
THE BLACK SPOT ETC. MIGHT BE CONFIRMED TO THE PLASTIC PART
OF THIS PRODUCT AND THE SHADE MIGHT BE DIFFERENT.
- ELV 及び RoHS 適合品
ELV AND RoHS COMPLIANT

嵌合図
MATED CONNECTORS

3.4	7.5	11	12.1	502386-0707	7
3.4	6.25	9.75	10.85	502386-0607	6
3.4	5	8.5	9.6	502386-0507	5
3.4	3.75	7.25	8.35	502386-0407	4
2.6	2.5	6	7.1	502386-0307	3
2.2	1.25	4.75	5.85	502386-0207	2
D	C	B	A	EMBOSSED TAPE PACKAGE オーダー番号 ORDER No. (KLT. NO.)	極数 (KLT. NO.)

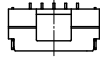
番号 NO.	部品 PART	材質 MATERIAL
①	ハウジング HOUSING	耐熱性樹脂 UL94V-0 色: ナチュラル HEATPROOF RESIN UL94V-0 COLOR: NATURAL
②	ターミナル TERMINAL	銅合金 COPPER ALLOY 金めっき: 0.1 micro-meter MIN. GOLD ニッケルめっき(下地): 1.0 micro-meter MIN. NICKEL (UNDER PLATING)
③	ネイル NAIL	銅合金 COPPER ALLOY 錫めっき: 1.0 micro-meter MIN. TIN ニッケルめっき(下地): 1.0 micro-meter MIN. NICKEL (UNDER PLATING)

RELEASED EC NO. J2016-0012 DRAWN: TAKAIKE CHKD: KASAKAWA APPR: NUKITA	DESCRIPTION 2015/02/23 2015/07/21 2015/07/21	GENERAL TOLERANCES (UNLESS SPECIFIED)		DIMENSION STYLE		SCALE	DESIGN UNITS	THIRD ANGLE PROJECTION
		0.25 UNDER UNDER ±0.03		MM ONLY			METRIC	
		0.25 OVER 0.5 UNDER ±0.05		DRAWN BY DATE		TITLE		
		0.5 OVER 1.0 UNDER ±0.1		TAKAIKE 2015/02/23		1.25 W/B CONN. SINGLE R/A REC. ASS'Y 2-7CKT.		
1.0 OVER 10 UNDER ±0.2		CHECKED BY DATE		DOCUMENT NO.		SHEET NO.		
10 OVER 30 UNDER ±0.25		KASAKAWA 2015/07/21		SD-502386-006		1 OF 2		
30 OVER ±0.3		APPROVED BY DATE		THIS DRAWING CONTAINS INFORMATION THAT IS PROPRIETARY TO MOLEX INCORPORATED AND SHOULD NOT BE USED WITHOUT WRITTEN PERMISSION				
ANGULAR ±3 °		MATERIAL NO.						
DRAFT WHERE APPLICABLE MUST REMAIN WITHIN DIMENSIONS		SEE TABLE						

Contact us: sales@integrated-circuit.com Website: www.integrated-circuit.com



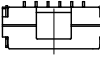
2 CKT.



5 CKT.



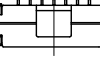
3 CKT.



6 CKT.

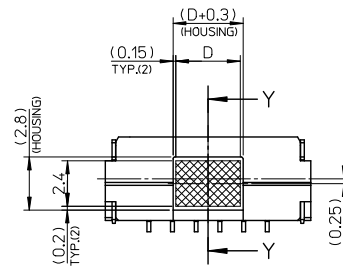


4 CKT.

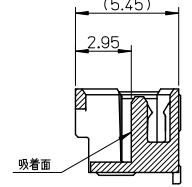


7 CKT.

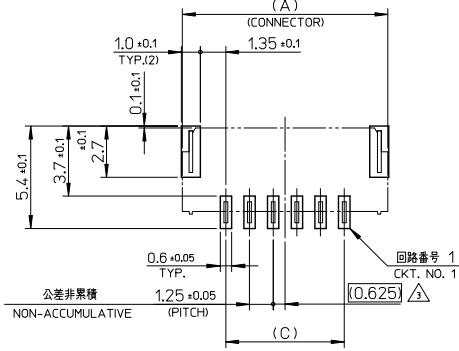
極数の種類
KIND OF CKT. NO.(FRONT VIEW)



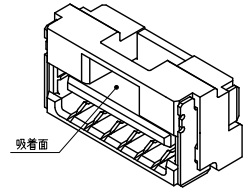
吸着範囲
VACUUM AREA



SECTION Y-Y



基板パターンレイアウト (参考)
RECOMMENDED P.C.B. PATTERN LAYOUT (REF.)



RELEASED IEC NO. J2016-0012 DRAWN: TAKAIKE 2015/02/23 CHIKUDASAKAWA 2015/07/21 APPROVED: NUKITA 2015/07/21 REV A	GENERAL TOLERANCES (UNLESS SPECIFIED)			DIMENSION STYLE		SCALE	DESIGN UNITS	THIRD ANGLE PROJECTION	
	0.25 UNDER	UNDER	± 0.03	MM ONLY			METRIC		
	0.25 OVER	0.5 UNDER	± 0.05	DRAWN BY DATE		TITLE	0.25 W/B CONN. SINGLE R/A REC. ASS'Y 2-7CKT. molex DOCUMENT NO. SD-502386-006 SHEET NO. 2 OF 2		
	0.5 OVER	1.0 UNDER	± 0.1	TAKAIKE 2015/02/23					
	1.0 OVER	10 UNDER	± 0.2	CHECKED BY DATE					
10 OVER	30 UNDER	± 0.25	KASAKAWA 2015/07/21						
30 OVER		± 0.3	APPROVED BY DATE						
	ANGULAR	± 3 °	MATERIAL NO.		SEE TABLE				
DRAFT WHERE APPLICABLE MUST REMAIN WITHIN DIMENSIONS			SIZE		THIS DRAWING CONTAINS INFORMATION THAT IS PROPRIETARY TO MOLEX INCORPORATED AND SHOULD NOT BE USED WITHOUT WRITTEN PERMISSION				