

Excellent Integrated System Limited

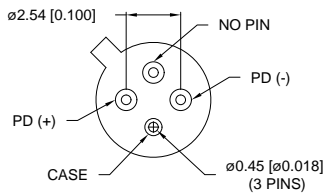
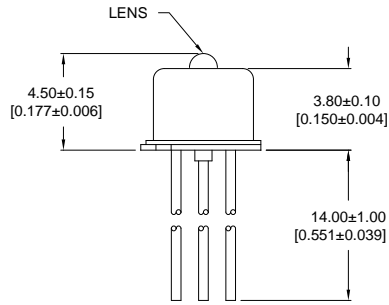
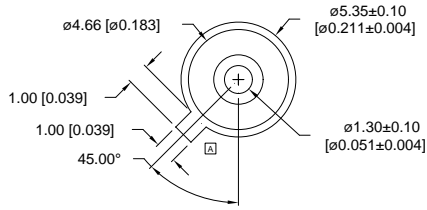
Stocking Distributor

Click to view price, real time Inventory, Delivery & Lifecycle Information:

[Lumex, Inc.](#)
[OED-PPD11075G-B](#)

For any questions, you can email us directly:
sales@integrated-circuit.com

UNCONTROLLED DOCUMENT



PART NUMBER		REV.
OED-PPD11075G-B		A
REV.	E.C.N. NUMBER AND REVISION COMMENTS	DATE

ELECTRO-OPTICAL CHARACTERISTICS (Tc=25°C, Vr=5V).

PARAMETER	SYMBOL	MIN	TYP	MAX	UNITS
ACTIVE AREA	-		75		µm
DETECTION RANGE	-	1100	1310	1600	nm
RESPONSIVITY*	R	0.8	0.9		A/W
DARK CURRENT	Id		0.3	2	nA
CAPACITANCE	C		0.8	2.0	pF
CUTOFF FREQUENCY	fc	1.5	2.0		GHz
RISE/FALL TIME	tr/ff		0.3	0.5	ns

*fSymbol|b0|0|c2|p18;fFromans.shx;=1300nm

ABSOLUTE MAXIMUM RATINGS (Tc=25°C)

PARAMETER	SYMBOL	MAX	UNITS
REVERSE VOLTAGE	Vr	25	V
REVERSE CURRENT	Ir	1	mA
FORWARD CURRENT	If	2	mA
OPERATING TEMP.	Top	40 TO + 85	°C
STORAGE TEMP.	Tstg	40 TO + 85	°C

UNCONTROLLED DOCUMENT

*UNLESS OTHERWISE SPECIFIED TOLERANCE IS ±0.25mm (±0.010")

REV. A	PART NUMBER OED-PPD11075G-B	<p>CONFIDENTIAL INFORMATION</p> <p>THE INFORMATION CONTAINED IN THIS DOCUMENT IS THE PROPERTY OF LUMEX INC. EXCEPT AS SPECIFICALLY AUTHORIZED IN WRITING BY LUMEX INC., THE HOLDER OF THIS DOCUMENT SHALL KEEP ALL INFORMATION CONTAINED HEREIN CONFIDENTIAL AND SHALL PROTECT SAME IN WHOLE OR IN PART FROM DISCLOSURE AND DISSEMINATION TO ALL THIRD PARTIES.</p> <p>RELIABILITY NOTE</p> <p>OUR MANY YEARS OF EXPERIENCE DATA ACCUMULATION INDICATE THAT SOLDER HEAT IS A MAJOR CAUSE OF EARLY AND FUTURE FAILURE. PLEASE PAY ATTENTION TO YOUR SOLDERING PROCESS.</p>	<p>LUMEX INCORPORATED</p> <p>290 E. HELLEN ROAD PALATINE, ILLINOIS 60067 PHONE: 1-847-359-2790 WEB: HTTP://WWW.LUMEX.COM</p>
PIN PHOTO DETECTOR.		DRAWN BY: DU/BC CHECKED BY: APPROVED BY: DATE: 2-12-99 PAGE: 1 OF 1 SCALE: N/A	