

Excellent Integrated System Limited

Stocking Distributor

Click to view price, real time Inventory, Delivery & Lifecycle Information:

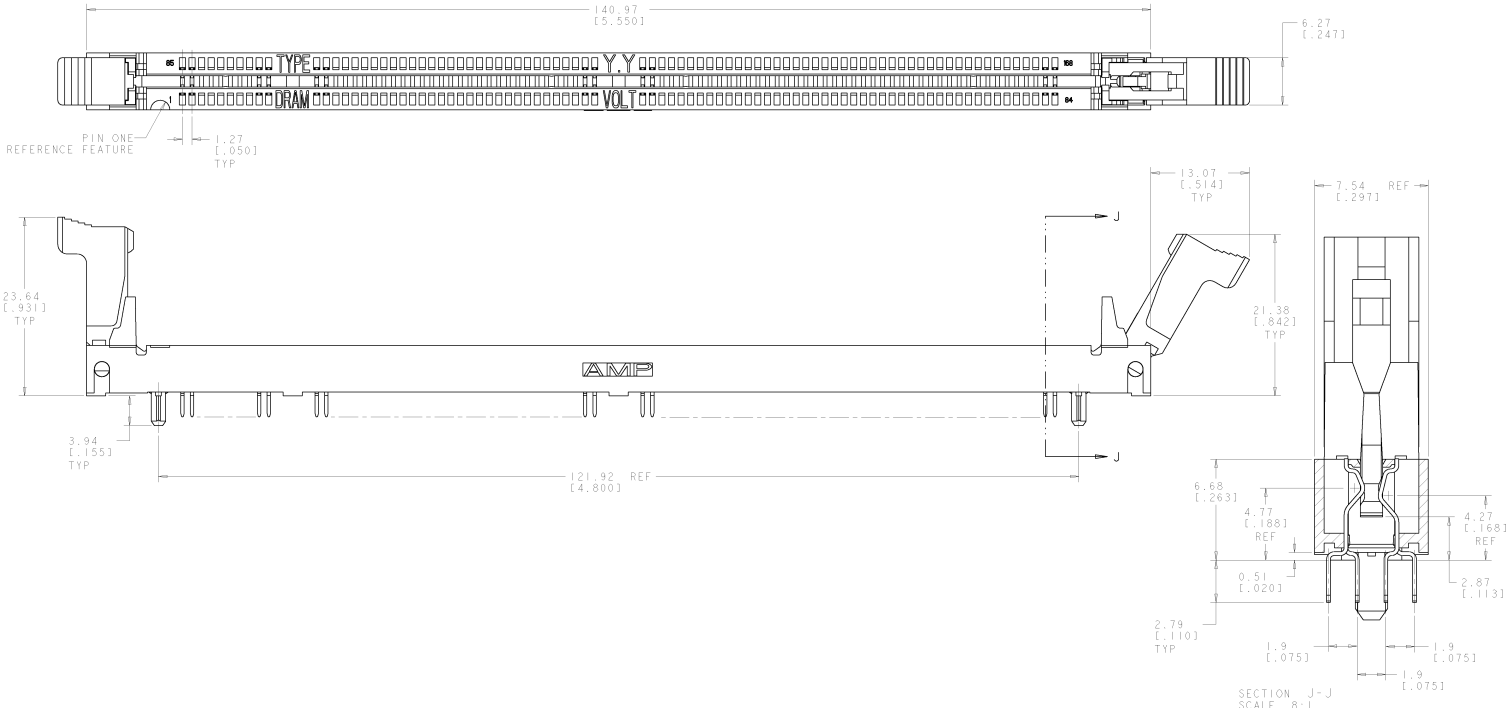
[TE Connectivity AMP Connectors](#)
[390040-4](#)

For any questions, you can email us directly:

sales@integrated-circuit.com

8	7	6	5	4	3	2	1
---	---	---	---	---	---	---	---

REV	DATE	BY	CHKD	DESCRIPTION	APP'D	DATE
GP	0			DESIGNED - 1 PER 0511-0143-02		10/01/00



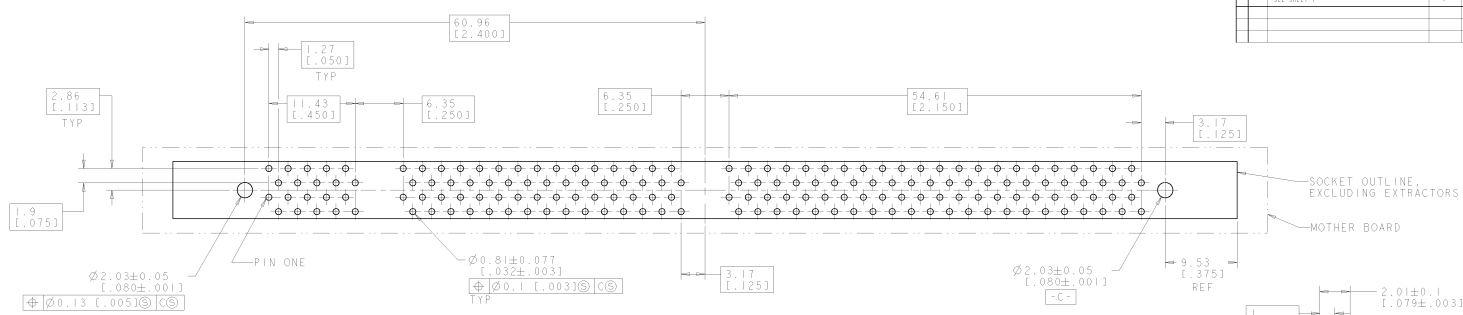
DETAIL C	DETAIL A	NON-BUFFERED DRAM, 3.3 VOLT	390040-6
DETAIL B	DETAIL A	SYNC DRAM, 3.3 VOLT	390040-5
DETAIL A	DETAIL A	STD DRAM, 3.3 VOLT	390040-4
DETAIL A	DETAIL B	STD DRAM, 5 VOLT	390040-1
KEY #1	KEY #2	PART DESCRIPTION	PART NUMBER

OBSOLETE

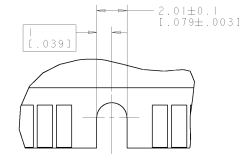
- △ FOR OPTIMUM PERFORMANCE, CONTACT PAD PLATING SHOULD BE SMOOTH AND FLAT. COPPER CONTACT PADS ARE TO BE OVERPLATED WITH 0.00127(.00050) MIN THK NICKEL FOLLOWED WITH 0.00102(.00040) MIN THK GOLD PLATING.
- △ CONTACT MATING AREA:
 0.00076(.00030) MIN THICK GOLD OVER 0.00381(.00150) NICKEL OR GOLD FLASH OVER 0.00051(.00020) MIN THK 80/20 PALLADIUM-NICKEL. SOLDER TAILS: 0.00381(.00150) MIN THK TIN-LEAD UNDERPLATE. 0.00127(.00050) MIN THK NICKEL OVER ENTIRE CONTACT.
- △ MATERIAL:
 HOUSING AND EXTRACTORS: GLASS FILLED, HIGH TEMPERATURE NYLON.
 CONTACTS: PHOS BRONZE

THE INFORMATION CONTAINED HEREIN IS UNCLASSIFIED EXCEPT WHERE SHOWN OTHERWISE DATE OF CLASSIFICATION: 05/01/00 BY: 1043/00		AMP Incorporated Harrisburg, PA 17105-2400
DIMENSIONS IN MILLIMETERS AND INCHES DIMENSIONS IN MILLIMETERS: 0.00127 (0.00050) DIMENSIONS IN INCHES: 0.00127 (0.00050)	ORDERING INFORMATION: AMP 390040-4 25-APP-30 AMP 390040-4 25-APP-30 AMP 390040-4 25-APP-30	AMP SOCKET ASSEMBLY DUAL HEAD-OUT, VERSION 11, 8 BYTE, 168 POSITION
MATERIAL: PHOS BRONZE	TITLE: 00779 DATE: 05/01/00 CUSTOMER DRAWING	PART NUMBER: 390040

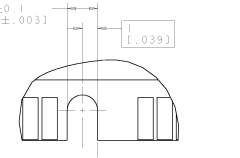
REV	DATE	DESCRIPTION	BY	CHK	APP
GP 0		ISSUE FOR PRODUCTION			
		SEE SHEET 1			



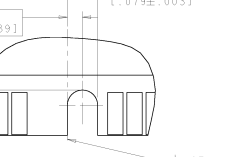
RECOMMENDED CIRCUIT BOARD HOLE LAYOUT



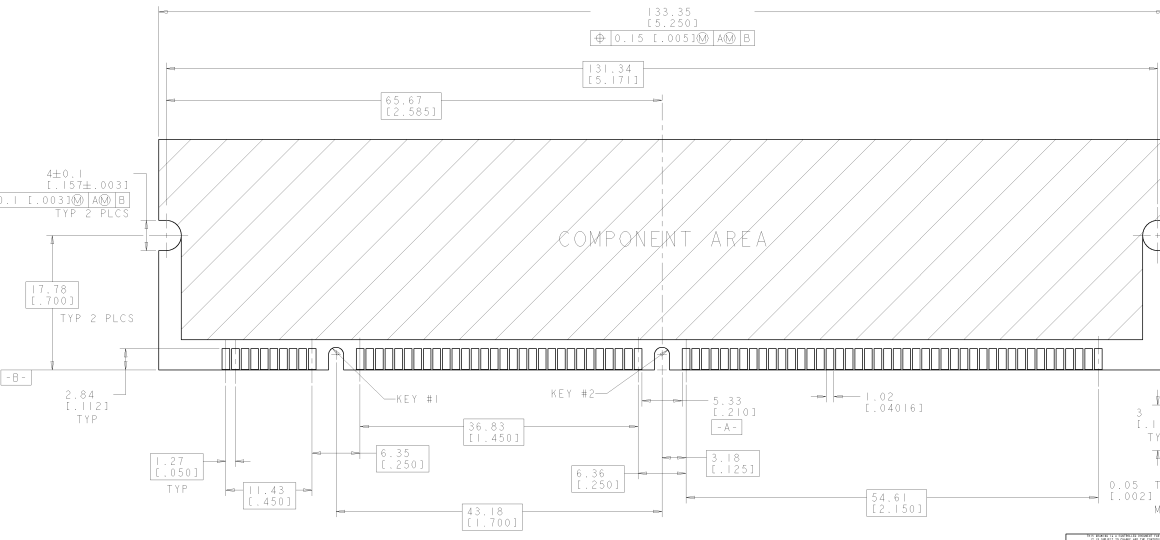
DETAIL A SCALE 8:1



DETAIL B SCALE 8:1



DETAIL C SCALE 8:1



RECOMMENDED MODULE LAYOUT
 SEE JEDEC SPEC. MO-161 FOR COMPLETE MODULE DETAILS
 1.27±0.10 [0.050±.0041] THICK ACROSS CONTACT PADS

THE INFORMATION CONTAINED HEREIN IS UNCLASSIFIED EXCEPT WHERE SHOWN OTHERWISE DATE 08-20-2013 BY 60322/UC/STP/STP		AMP AMP Incorporated Harrisburg, PA 17105-2400	
PART NUMBER: 390040-4 MANUFACTURING: 20-APC-30 ORDERING: 20-APC-30 ORDERING UNIT: 1000 DATE: 08-20-2013 DRAWN BY: STP CHECKED BY: STP APPROVED BY: STP	PART NUMBER: 390040-4 MANUFACTURING: 20-APC-30 ORDERING: 20-APC-30 ORDERING UNIT: 1000 DATE: 08-20-2013 DRAWN BY: STP CHECKED BY: STP APPROVED BY: STP	SOCKET ASSEMBLY DUAL IN-LINE PACKAGE, VERSION 11, 8 BIT, 168 POSITION DATE: 08-20-2013 DRAWN BY: STP CHECKED BY: STP APPROVED BY: STP	
MATERIAL: SEE 3H1 FINISH:		CUSTOMER DRAWING: A1 0079 DATE: 08-20-2013 BY: STP CHECKED BY: STP APPROVED BY: STP	