

Excellent Integrated System Limited

Stocking Distributor

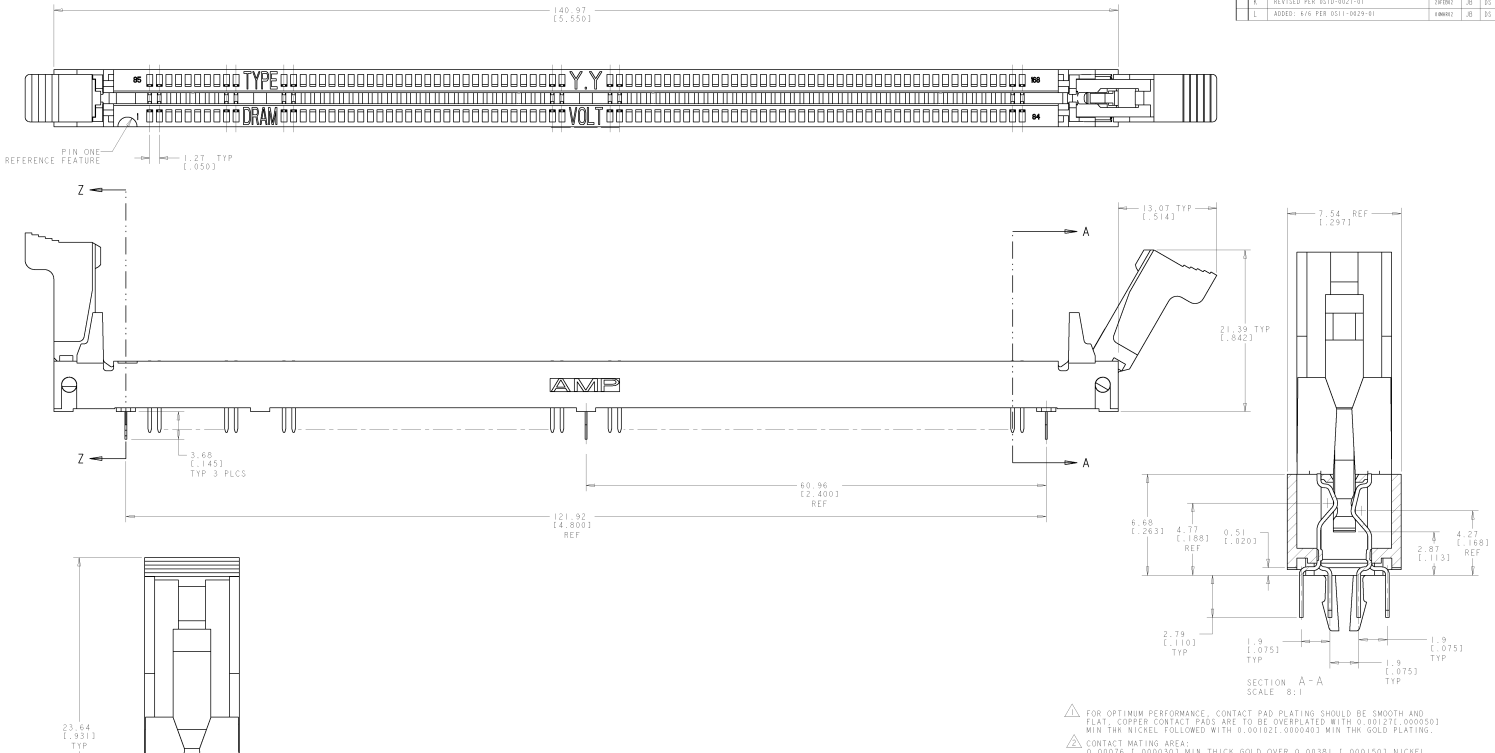
Click to view price, real time Inventory, Delivery & Lifecycle Information:

[TE Connectivity AMP Connectors](#)
[390074-6](#)

For any questions, you can email us directly:

sales@integrated-circuit.com

REV	DATE	BY	CHKD	DESCRIPTION	QTY	UNIT	QTY
0							
1				ADDED: 3/16 AND 4/16 PER 0510-0148-02	10000	10	10
2				ADDED: 5/16 PER 0510-0086-01	10000	10	10
3				REVISED PER 0510-0023-01	10000	10	10
4				ADDED: 6/16 PER 0511-0029-01	10000	10	10

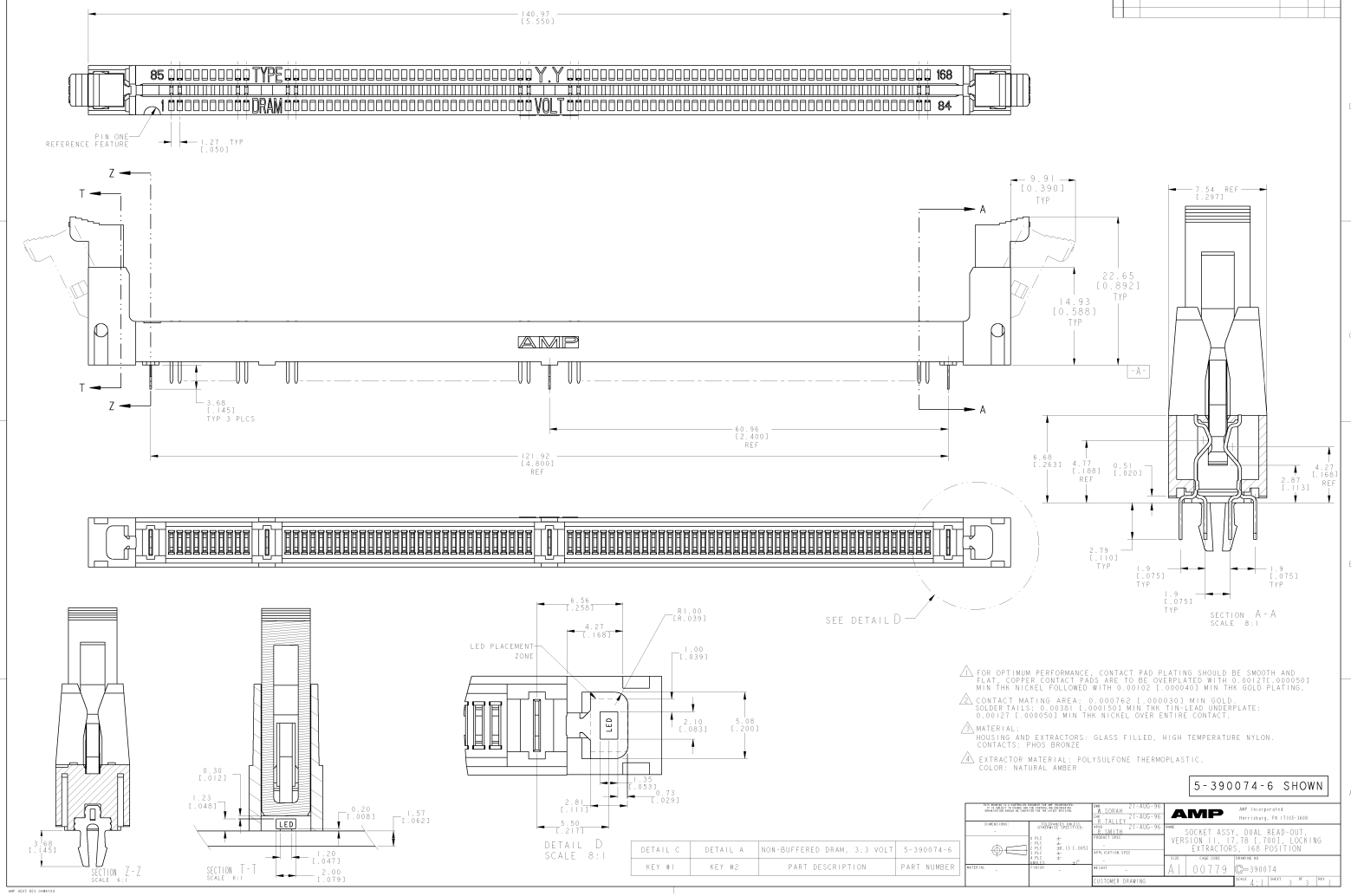


- ▲ FOR OPTIMUM PERFORMANCE, CONTACT PAD PLATING SHOULD BE SMOOTH AND FLAT. COPPER CONTACT PADS ARE TO BE OVERPLATED WITH 0.00127(0.00050) MIN THK NICKEL FOLLOWED WITH 0.001021(0.00040) MIN THK GOLD PLATING.
- ▲ CONTACT MATING AREA: 0.00076 (1.00000) MIN THICK GOLD OVER 0.00381 (1.00010) NICKEL OR GOLD FLASH OVER 0.00051 (0.00020) MIN THICK 80/20 PALLADIUM-NICKEL. MIN THICK, SOLDER TAILS: 0.00381 (0.00150) MIN THICK TIN-LEAD UNDERPLATE. 0.00127 (0.00050) MIN THICK NICKEL OVER ENTIRE CONTACT.
- ▲ MATERIAL: HOUSING AND EXTRACTORS: GLASS FILLED, HIGH TEMPERATURE NYLON. CONTACTS: PHOS BRONZE.
- ▲ PART NUMBER 1-390074-4 AND 1-390074-6 PACKAGED IN TUBES.
- ▲ EXTRACTOR MATERIAL: GLASS-FILLED, HIGH TEMPERATURE NYLON, COLOR: GREY.
- ▲ EXTRACTOR TO BE INSERTED IN PIN 1 END.
- ▲ EXTRACTOR TO BE INSERTED IN PIN 84 END.
- ▲ SEE SHEET 3 FOR DETAILS.
- ▲ USE ONLY GOLD PLATE OPTION FOR THIS DASH NUMBER.

DETAIL C	DETAIL A	NON-BUFFERED DRAM, 3.3 VOLT	▲6-390074-6
DETAIL C	DETAIL A	NON-BUFFERED DRAM, 3.3 VOLT	▲5-390074-6
DETAIL C	DETAIL A	NON-BUFFERED DRAM, 3.3 VOLT	▲4-390074-6
DETAIL C	DETAIL A	NON-BUFFERED DRAM, 3.3 VOLT	▲3-390074-6
DETAIL C	DETAIL A	NON-BUFFERED DRAM, 3.3 VOLT	2-390074-6
DETAIL C	DETAIL A	NON-BUFFERED DRAM, 3.3 VOLT	▲1-390074-6
DETAIL A	DETAIL A	STD DRAM, 3.3 VOLT	▲1-390074-4
DETAIL C	DETAIL A	NON-BUFFERED DRAM, 3.3 VOLT	390074-6
DETAIL B	DETAIL A	SYNC DRAM, 3.3 VOLT	390074-5
DETAIL A	DETAIL A	STD DRAM, 3.3 VOLT	390074-4
DETAIL A	DETAIL B	STD DRAM, 5 VOLT	390074-1
KEY #1	KEY #2	PART DESCRIPTION	PART NUMBER

AMP Incorporated Harrisburg, PA 17105-2400	
SOCKET ASSY, DUAL READ-OUT, VERSION 1, 17, 78 (1, 700), LOCKING EXTRACTORS, 168 POSITION	00779 390074

8	7	6	5	4	3	2	1
REVISIONS		REV. NO.		DATE		BY	
GP	0						



- FOR OPTIMUM PERFORMANCE, CONTACT PAD PLATING SHOULD BE SMOOTH AND FLAT. COPPER CONTACT PADS ARE TO BE OVERPLATED WITH 0.00121 (0.00050) MIN THK NICKEL FOLLOWED WITH 0.00102 (0.00040) MIN THK GOLD PLATING.
- CONTACT MATING AREA: 0.000762 (0.00030) MIN GOLD. SOLDER TAILS: 0.00391 (0.00050) MIN THK TIN LEAD UNDERPLATE: 0.00127 (0.00050) MIN THK NICKEL OVER ENTIRE CONTACT.
- MATERIAL: HOUSING AND EXTRACTORS: GLASS FILLED, HIGH TEMPERATURE NYLON. CONTACTS: PHOS BRONZE.
- EXTRACTOR MATERIAL: POLYSULFONE THERMOPLASTIC. COLOR: NATURAL AMBER.

5-390074-6 SHOWN

TE CONNECTIVITY		AMP	
390074-6		5-390074-6	
NON-BUFFERED DIMM, 3.3 VOLT		PART NUMBER	
KEY #1	KEY #2	PART DESCRIPTION	PART NUMBER
		NON-BUFFERED DIMM, 3.3 VOLT	5-390074-6