



Distributor of TE Connectivity AMP Connectors: Excellent Integrated System Limited
Datasheet of 521149-2 - Connector Quick Connect Receptacle 16-20 AWG 0.187" (4.75mm)
Crimp

Contact us: sales@integrated-circuit.com Website: www.integrated-circuit.com

Excellent Integrated System Limited

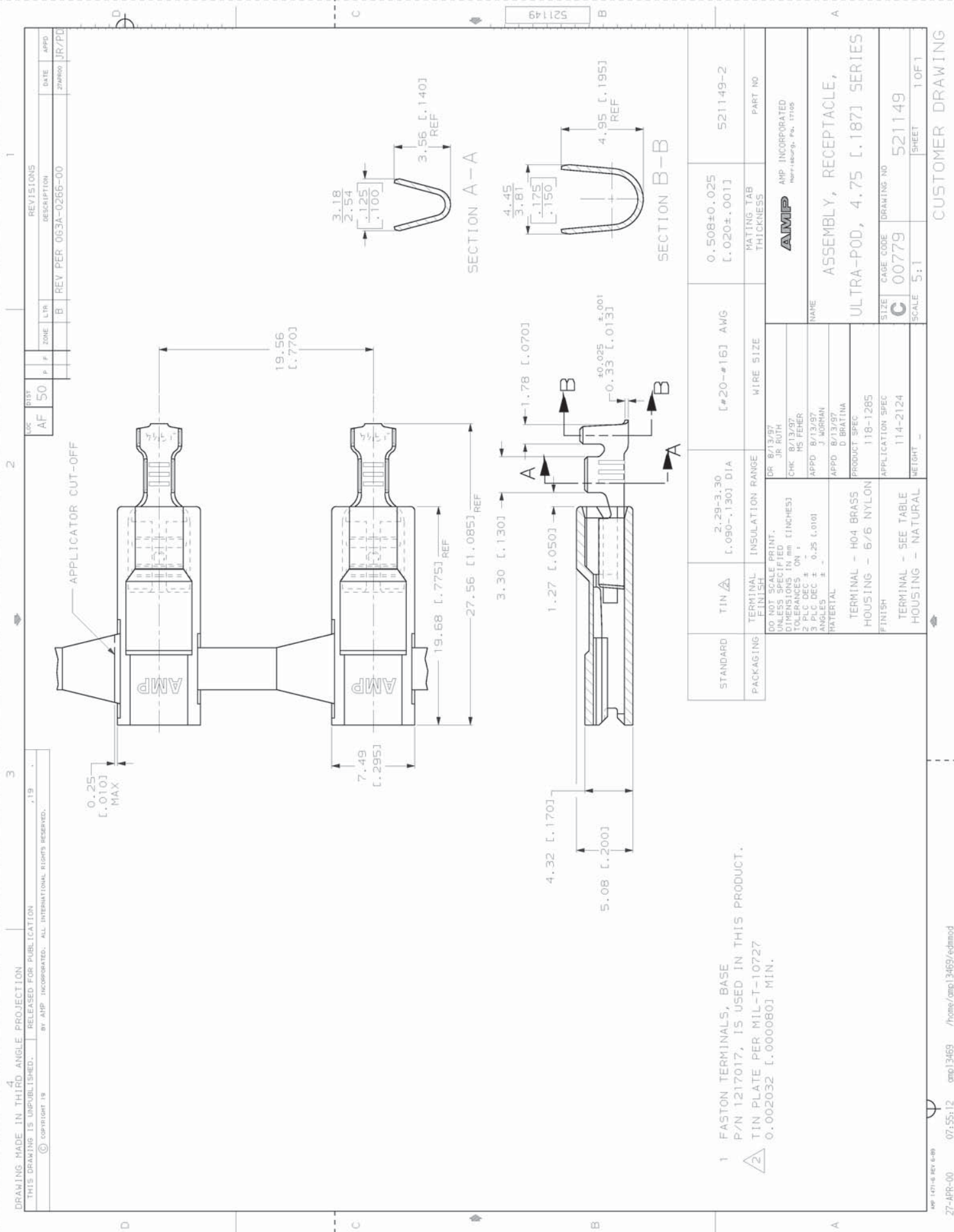
Stocking Distributor

Click to view price, real time Inventory, Delivery & Lifecycle Information:

[TE Connectivity AMP Connectors](#)
[521149-2](#)

For any questions, you can email us directly:

sales@integrated-circuit.com



STANDARD	TIN	TERMINAL FINISH	INSULATION RANGE	WIRE SIZE	PART NO
	2.29-3.30 [.090-.130] DIA	DR 8/13/97 JR RUTH		[#20-#16] AWG	521149-2
PACKAGING	TERMINAL FINISH	INSULATION RANGE	WIRE SIZE	MATING TAB THICKNESS	
	NO HAS NOT SUFFICIENT DIMENSIONS IN INCHES TOLERANCES ON 1 2 PLC DEC ± 0.25 (0.01) ANGLES ± MATERIAL	DR 8/13/97 JR RUTH CHK 8/13/97 MS FIEBER APPD 8/13/97 J MORRIN		0.508±0.025 [.020±.001]	
	TERMINAL - H04 BRASS HOUSING - 6/6 NYLON	APPD 8/13/97 D BRATINA PRODUCT SPEC 118-1285			
	TERMINAL - SEE TABLE HOUSING - NATURAL	APPLICATION SPEC 114-2124 WEIGHT -			

- 1 FASTON TERMINALS, BASE P/N 1217017, IS USED IN THIS PRODUCT.
- 2 TIN PLATE PER MIL-T-10727 0.002032 [.000080] MIN.

AMP INCORPORATED MORRISBORO, PA, 17105
ASSEMBLY, RECEPTACLE, ULTRA-P0D, 4.75 [.187] SERIES
SIZE CAGE CODE DRAWING NO C 00779 521149
SCALE SHEET 5:1 1 OF 1

CUSTOMER DRAWING