

Excellent Integrated System Limited

Stocking Distributor

Click to view price, real time Inventory, Delivery & Lifecycle Information:

[TE Connectivity AMP Connectors](#)
[447314-1](#)

For any questions, you can email us directly:

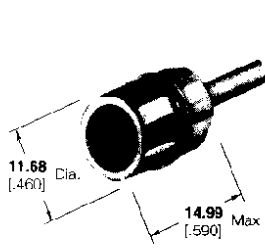
sales@integrated-circuit.com



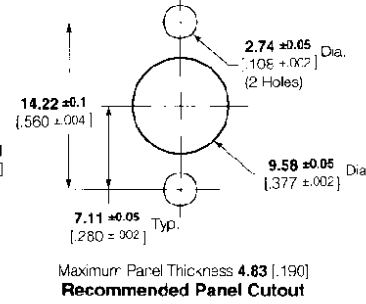
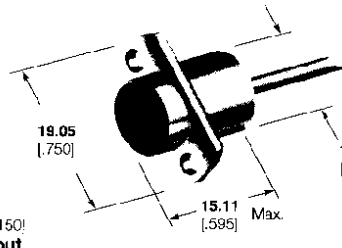
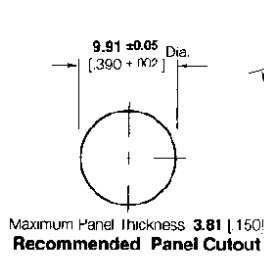
RF Coax Connectors

3.5 mm Blind Mate Connectors

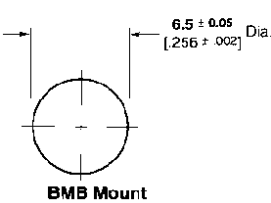
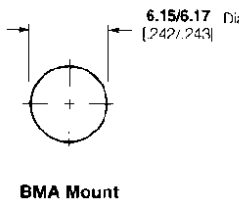
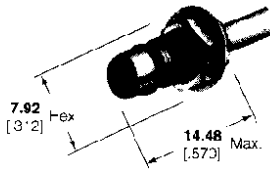
Bulkhead Plug



2-Hole Panel Plug



Bulkhead Jack



Maximum Panel Thickness 3.18 [125]
 Recommended Panel Cutouts

Lockwasher and Jam Nut



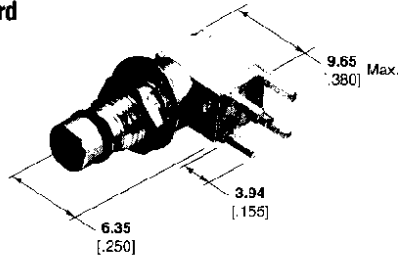
Part No.
1-22145-3

Part No.
2-332004-0

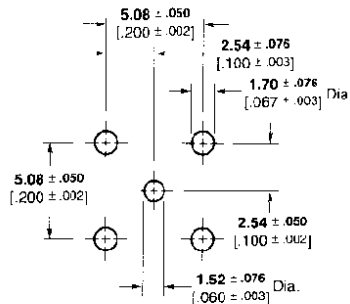
RG/U Cable	Connector Configuration	Hand Tool Kit No. 59981-1		Part No.
		Die Set	Locator*	
174, 188, 316	2-Hole Panel Plug	***	—	447314-1
	Bulkhead Jack (BMA Mount Cutout)	***	—	447315-1
316 Double Braid	Bulkhead Plug	**	—	1274113-1
432 Semi-Rigid/ 3.58 [141]	2-Hole Panel Plug	312253-1	313745-1	222200-1
405 Semi-Rigid/ 2.18 [086]	Bulkhead Plug	312253-2	313745-1	222197-1
	Bulkhead Jack (BMB Mount Cutout)	312253-2	313745-1	222196-1

*Not included in Hand Tool Kit No. 59981-1; must be purchased separately.
 **See drawing for tooling information.
 ***Use hand tool 220061-1 to crimp contact and ferrule.

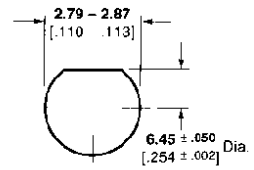
Right Angle PC Board Bulkhead Jack



Part No. 448089-1



Recommended PCB Layout



Recommended Panel Cutout