

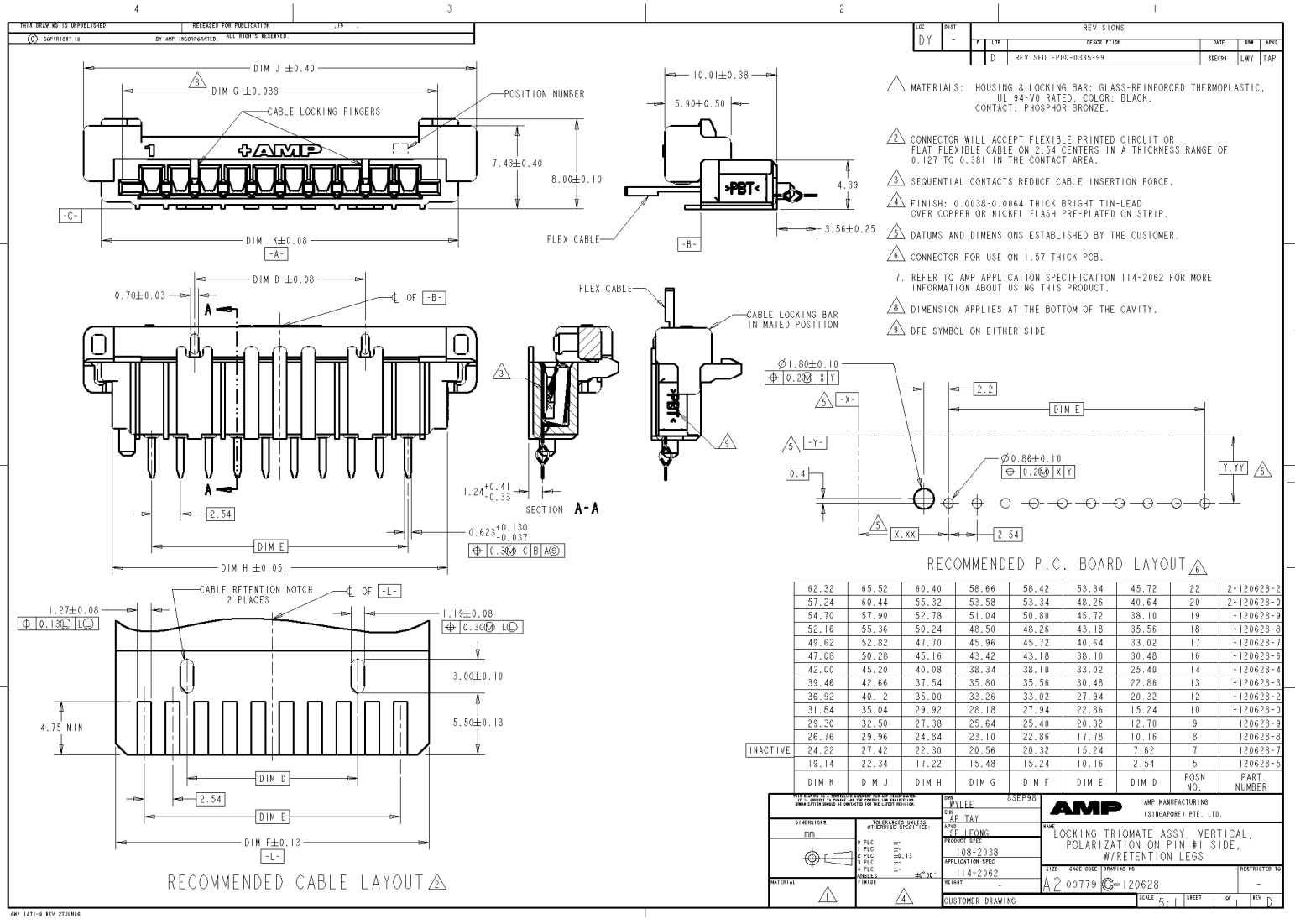
## **Excellent Integrated System Limited**

Stocking Distributor

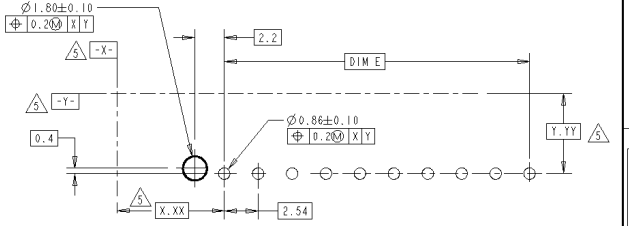
Click to view price, real time Inventory, Delivery & Lifecycle Information:

[TE Connectivity AMP Connectors](#)  
[1-120628-9](#)

For any questions, you can email us directly:  
[sales@integrated-circuit.com](mailto:sales@integrated-circuit.com)



- REVISITONS
- | REV | DESCRIPTION          | DATE  | BY  | APP |
|-----|----------------------|-------|-----|-----|
| 1   | REVISED FP00-0335-99 | 08/09 | LWY | TAP |
- 1 MATERIALS: HOUSING & LOCKING BAR: GLASS-REINFORCED THERMOPLASTIC, UL 94-V0 RATED, COLOR: BLACK, CONTACT: PHOSPHOR BRONZE.
  - 2 CONNECTOR WILL ACCEPT FLEXIBLE PRINTED CIRCUIT OR FLAT FLEXIBLE CABLE ON 2.54 CENTERS IN A THICKNESS RANGE OF 0.127 TO 0.381 IN THE CONTACT AREA.
  - 3 SEQUENTIAL CONTACTS REDUCE CABLE INSERTION FORCE.
  - 4 FINISH: 0.0038-0.0064 THICK BRIGHT TIN-LEAD OVER COPPER OR NICKEL FLASH PRE-PLATED ON STRIP.
  - 5 DATUMS AND DIMENSIONS ESTABLISHED BY THE CUSTOMER.
  - 6 CONNECTOR FOR USE ON 1.57 THICK PCB.
  - 7 REFER TO AMP APPLICATION SPECIFICATION 114-2062 FOR MORE INFORMATION ABOUT USING THIS PRODUCT.
  - 8 DIMENSION APPLIES AT THE BOTTOM OF THE CAVITY.
  - 9 DFE SYMBOL ON EITHER SIDE



RECOMMENDED P.C. BOARD LAYOUT

DIM K	DIM J	DIM H	DIM G	DIM F	DIM E	DIM D	POSN NO.	PART NUMBER
62.32	65.52	60.40	58.66	58.42	53.34	45.72	22	2-120628-2
57.24	60.44	55.32	53.58	53.34	48.26	40.64	20	2-120628-0
54.70	57.90	52.78	51.04	50.80	45.72	38.10	19	1-120628-9
52.16	55.36	50.24	48.50	48.26	43.18	35.56	18	1-120628-8
49.62	52.82	47.70	45.96	45.72	40.64	33.02	17	1-120628-7
47.08	50.28	45.16	43.42	43.18	38.10	30.48	16	1-120628-6
42.00	45.20	40.08	38.34	38.10	33.02	25.40	14	1-120628-4
39.46	42.66	37.54	35.80	35.56	30.48	22.86	13	1-120628-3
36.92	40.12	35.00	33.26	33.02	27.94	20.32	12	1-120628-2
31.84	35.04	29.92	28.18	27.94	22.86	15.24	10	1-120628-0
29.30	32.50	27.38	25.64	25.40	20.32	12.70	9	120628-9
26.76	29.96	24.84	23.10	22.86	17.78	10.16	8	120628-8
24.22	27.42	22.30	20.56	20.32	15.24	7.62	7	120628-7
19.14	22.34	17.22	15.48	15.24	10.16	2.54	5	120628-5

FOR DIMENSIONS, SPECIFICATIONS, AND TOLERANCES, REFER TO THE DRAWING OR THE CUSTOMER SPECIFICATION. DIMENSIONS ARE IN MILLIMETERS UNLESS OTHERWISE SPECIFIED.

SYMBOLS:	TOLERANCES UNLESS OTHERWISE SPECIFIED:	DATE: 05/29/98	AMP MANUFACTURING (SINGAPORE) PTE. LTD.
0 P.L.C. ±	0.15	BY: WYLIE	
1 P.L.C. ±	0.30	CHK: AP TAY	
2 P.L.C. ±	0.75	APP: SE LEONG	
3 P.L.C. ±	1.50	PRODUCT SPEC: 103-2038	
4 P.L.C. ±	3.00	APPLICATION SPEC: 114-2062	
5 P.L.C. ±	6.00	REVISION: 114-2062	
6 P.L.C. ±	12.00	REWORK: -	
7 P.L.C. ±	24.00	CUSTOMER DRAWING: -	
8 P.L.C. ±	48.00		
9 P.L.C. ±	96.00		

TITLE: LOCKING TRIOMATE ASSY, VERTICAL, POLARIZATION ON PIN #1 SIDE, W/RETENTION LEGS  
 CASE CODE: 00779 DRAWING NO: 120628  
 SCALE: 5:1 SHEET 1 OF 1 REV: D