

Excellent Integrated System Limited

Stocking Distributor

Click to view price, real time Inventory, Delivery & Lifecycle Information:

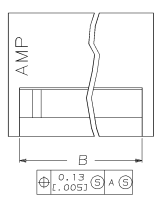
[TE Connectivity AMP Connectors](#)
[770896-4](#)

For any questions, you can email us directly:

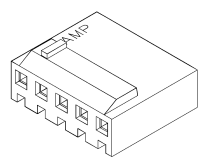
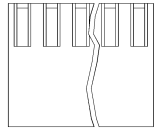
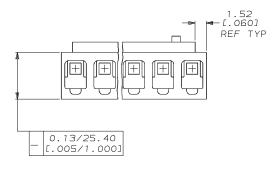
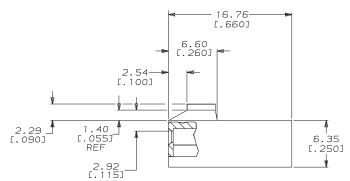
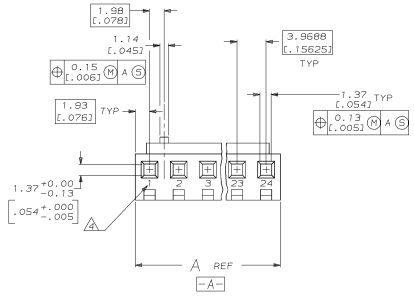
sales@integrated-circuit.com

DRAWING MADE IN THIRD ANGLE PROJECTION
 THIS DRAWING IS UNLESS OTHERWISE SPECIFIED RELEASED FOR PUBLICATION
 © copyright 19 BY AMP INCORPORATED. ALL INTERNATIONAL RIGHTS RESERVED.

REV	DATE	DESCRIPTION	BY	CHKD
54				
E	12-06-95	RL5D-S & REV PER EC 0730-0049-95		



- UNIT ACCEPTS 1.14 (.045) SQUARE OR ROUND POST.
- UNIT ACCEPTS STANDARD SL-156 CONTACTS.
- UNIT ACCEPTS KEYING PLUG 640254-1 AND KEYING PIN 640255-1.
- CIRCUIT ID NUMBERS.
- DIMENSIONS IN BRACKETS ARE IN INCHES.



3-DIMENSIONAL MODEL NTS



19.74 (.777)	16.66 (.656)	5	770896-5
12.70 (.500)	15.77 (.621)	4	770896-4

B		A		NO. OF CIRCUITS	PART NO
DO NOT SCALE PRINT. UNLESS SPECIFIED DIMENSIONS IN mm (INCHES) TOLERANCES ON - 3 PLS DEC 2 ± 0.13 (.005) ANGLES ± °		OR 2-25-82 R. 341MM CTR 2-25-82 R. 341MM APPD 2-25-82 E. BEILES		5	AMP AMP Incorporated Harrisburg, PA 17105-3608
MATERIAL: NYLON 66 94V-0 NATURAL		PRODUCT SPEC: -		NAME: HOUSING WITH .260 LOCKING RAMP AND A TAB, SL-156	
FINISH: -	APPLICATION SPEC: -	SIZE: D	CAGE CODE: 00779	DRAWING NO: 770896	
WEIGHT: -	SCALE: 4:1	SHEET: 1 OF 1		CUSTOMER DRAWING	