



Distributor of TE Connectivity AMP Connectors: Excellent Integrated System Limited
Datasheet of 786146-1 - D-Sub Connector Receptacle, Female Sockets 37 Position Through
Hole Press-Fit

Contact us: sales@integrated-circuit.com Website: www.integrated-circuit.com

Excellent Integrated System Limited

Stocking Distributor

Click to view price, real time Inventory, Delivery & Lifecycle Information:

[TE Connectivity AMP Connectors](#)
[786146-1](#)

For any questions, you can email us directly:

sales@integrated-circuit.com

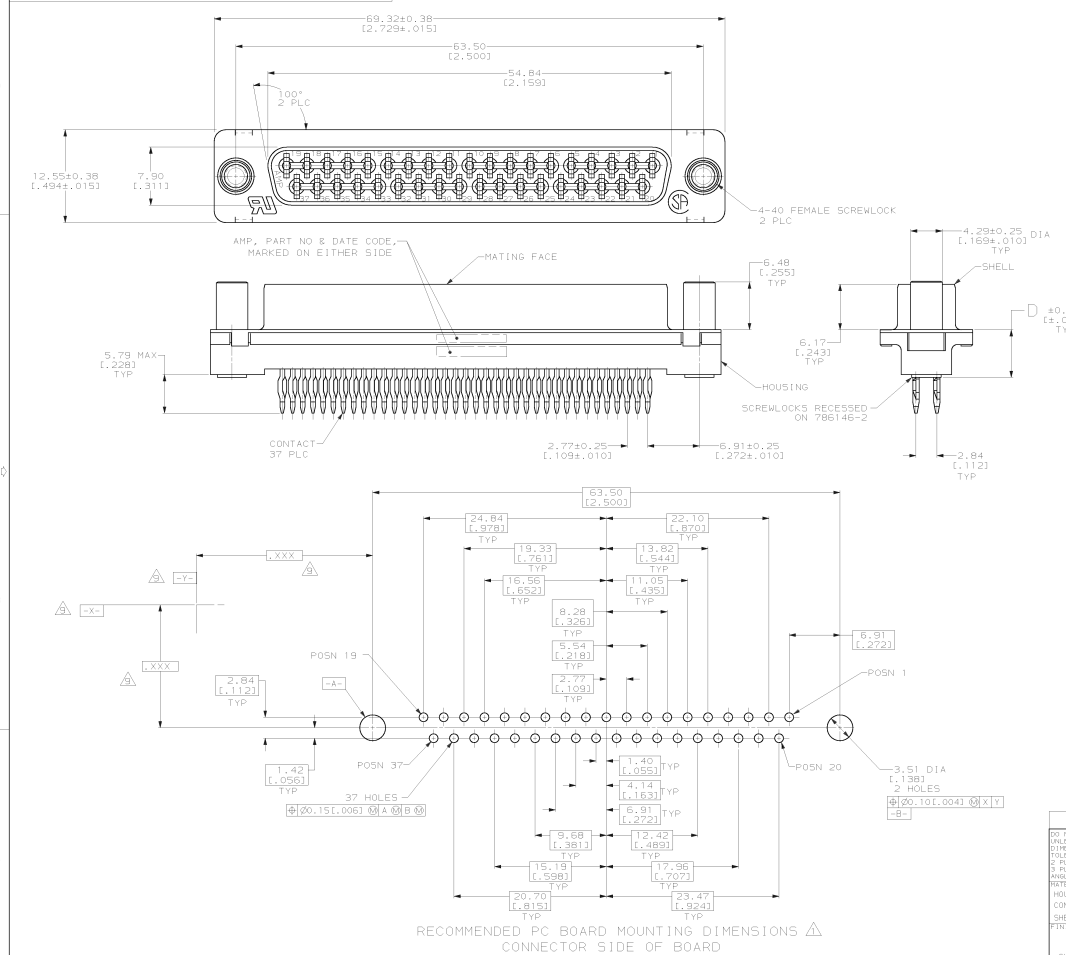


Distributor of TE Connectivity AMP Connectors: Excellent Integrated System Limited

Datasheet of 786146-1 - D-Sub Connector Receptacle, Female Sockets 37 Position Through

PRINTING MADE IN THIS ANGLE PROTECTION
 THIS DRAWING IS UNLESS OTHERWISE SPECIFIED. RELEASED FOR PUBLICATION
 © COPYRIGHT 19 BY AMP, INCORPORATED. ALL INTERNATIONAL RIGHTS RESERVED.

REV	DATE	DESCRIPTION	BY	CHKD	APPD
D	REV PER EC 0060-0045-01				



- ⚠ RECOMMENDATIONS FOR 2.36 (±.093) MIN THICK PC BOARD:
- A. HOLE DIAMETER AFTER DRILLING = 1.14±0.03 (±.045±.001).
- B. HOLE DIAMETER AFTER TIN-LEAD PLATING = 0.94±0.09 (±.037-.043).
- C. HOLE DIAMETER AFTER REFLOW = 0.91±0.09 (±.036-.043).
- D. PC BOARD PLATING TO BE 7.62μm (±.000300) MIN TIN-LEAD OVER 0.05±0.03 (±.002±.001) COPPER.
- ⚠ NYLON OR POLYESTER, UL 94V-0 RATED, GLASS FILLED, BLACK.
- ⚠ COPPER ALLOY PER ASTM B 122.
- ⚠ CARBON STEEL PER ASTM A 109.
- ⚠ BRASS PER 00-B-626.
- ⚠ GOLD PLATING PER MIL-G-45204, NICKEL PLATING PER 90-N-290, TIN PLATING PER MIL-T-10727, COPPER PLATING PER MIL-C-14550.
- ⚠ 5.08μm (±.000200) MIN TIN-LEAD OVER 2.54μm (±.000100) MIN COPPER.
- ⚠ 0.76μm (±.000030) MIN GOLD FOR A LENGTH OF 1.02 (±.040) MIN FROM MATING END, 2.54μm (±.000100) MIN TIN OR TIN-LEAD FOR A LENGTH OF 5.79 (±.228) MIN FROM OPPOSITE END, BOTH OVER 1.27μm (±.00050) MIN NICKEL.
- ⚠ DATUMS AND BASIC DIMENSIONS ESTABLISHED BY CUSTOMERS.

5.99 (±.236)	786146-2
6.48 (±.253)	786146-1
D	PART NUMBER

DO NOT SCALE PRINT.	OR 1-30-82	AMP Incorporated Harrisburg, PA 17105-3608
MILCS SPECIFIED DIMENSIONS IN MM (INCHES)	DATE 2-24-92	
TOLERANCES ON:	AMPD 215-83	NAME RECEPTACLE ASSEMBLY, SIZE 4, 37 POSITION, ACTION PIN™ VERTICAL, FRONT METAL SHELL AMPLIMITE™ HD-20
Ø P L C DEC ± 0.13 (±.005)	AMPD 215-83	
Ø P L C DEC ± 0.25	AMPD 215-83	PRODUCT SPEC 108-40014
ANGLES ± 0.2°	AMPD 215-83	
HOUSING/CONTACTS/SCREWLOCKS/SHIELD	AMPD 215-83	APPLICATION SPEC -
CONTACTS/SHIELD	AMPD 215-83	
FINISH	AMPD 215-83	SIZE D 00779
CONTACTS/SHIELD	AMPD 215-83	
HEIGHT	AMPD 215-83	DRAWING NO 786146
	AMPD 215-83	
	AMPD 215-83	SHEET 4 of 1